

Guide to DRAGON Computer Optimization

Before you begin

- 1) Make sure the computer meets (and exceeds) the recommended requirements.

Minimum Computer Requirements

- Windows Operating System 7, 8, 8.1, 10
- ACER laptops are NOT recommended
- 2.0 GHz Dual-Core Processor
- 4 GB Ram (8GB RAM or higher is recommended)
- 2 GB Free Hard Drive Space
- 1280 x 800 Screen Resolution or greater
- OpenGL 1.3 Compatible Graphics Adapter
- .NET Framework 3.5 SP1 Installed
- Dedicated Ethernet port (for running machine)
- Wifi Adapter or secondary Ethernet port (internet is required)
- Full Keyboard and Mouse

- 2) Ensure no other applications are running except those required for the operation of the machine.
- 3) Ensure you do not have any USB flash drives or USB hard drives plugged into the computer (seems irrelevant but actually can cause major performance issues).
- 4) Disable (or unplug) any Wifi or Ethernet connections when running the machine (except for the machine Ethernet port)

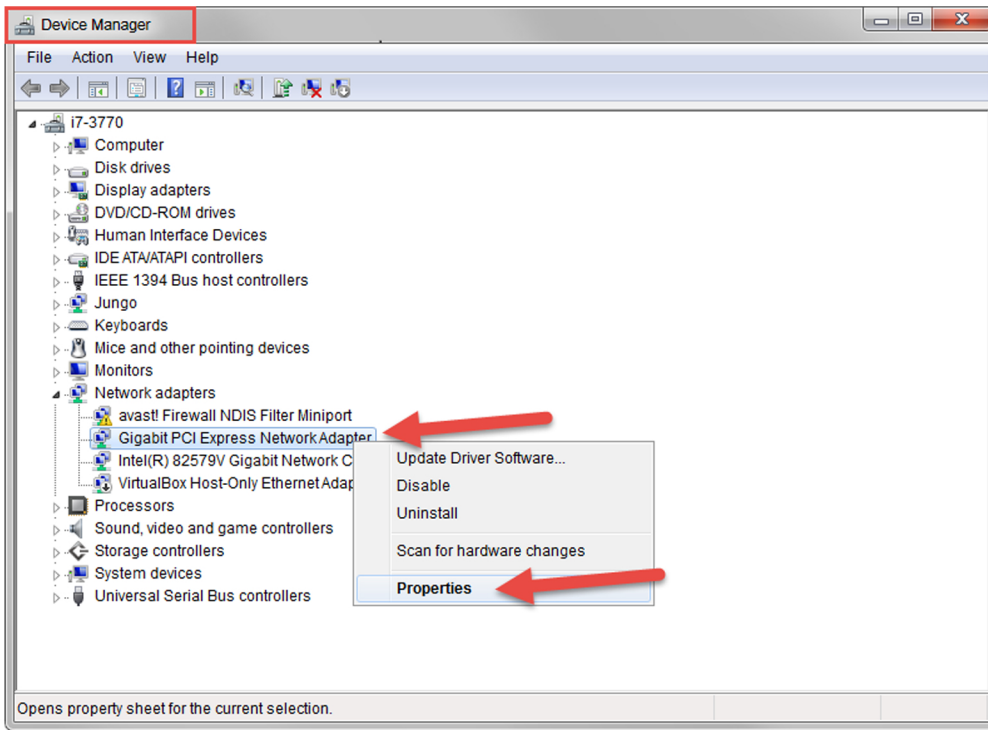
IMPORTANT:

- Your dedicated PC/Laptop must have internet connectivity either by wifi or direct connection to a router via a second ethernet port (aside from the ethernet port dedicated for use with the Dragon machine).
- Without internet connectivity, your Bend-Tech support will be severely limited.

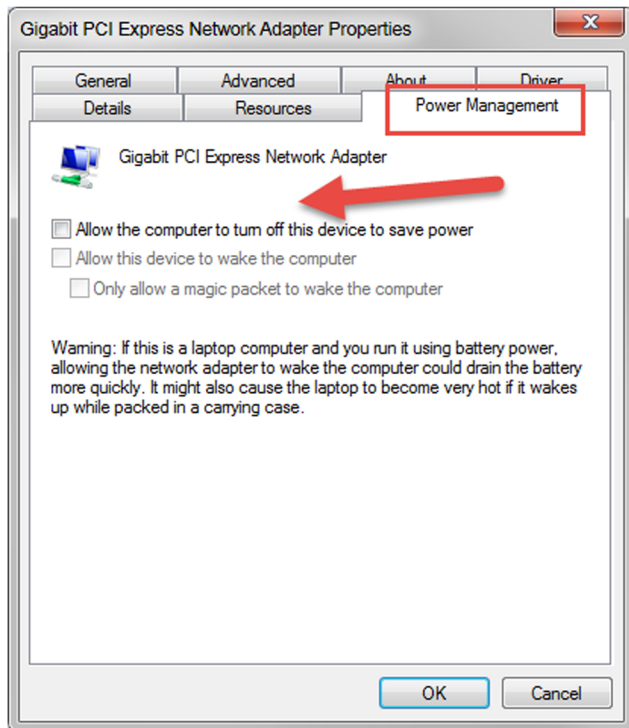
[Continue to the next page AFTER you've finished all the steps above](#)

Step 1:

1) Go to Control Panel -> Device Manager, select your Ethernet Adapter and open its properties:

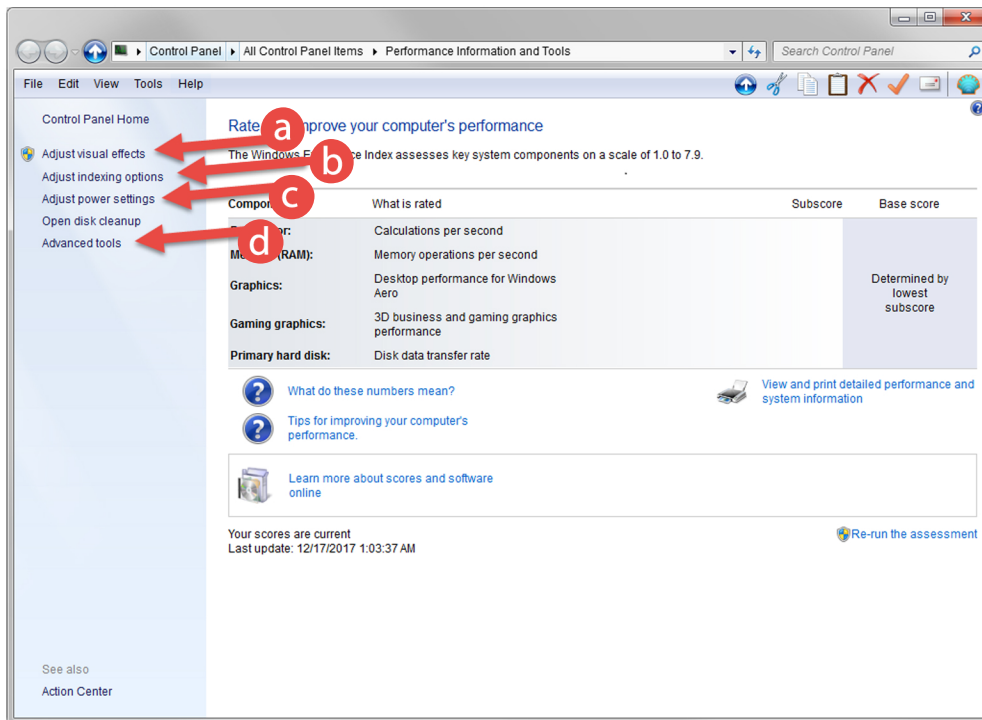


2) UNCHECK Allow the computer to turn off this device then click OK:

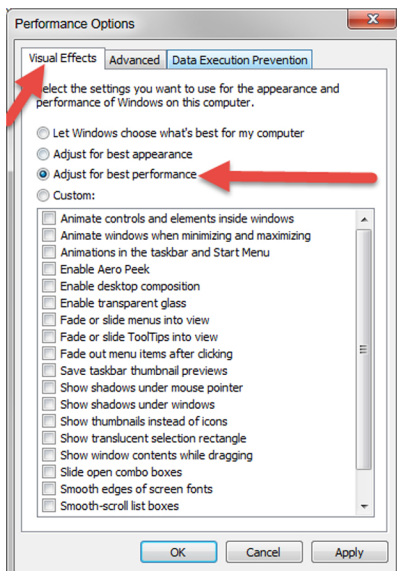


Step 2:

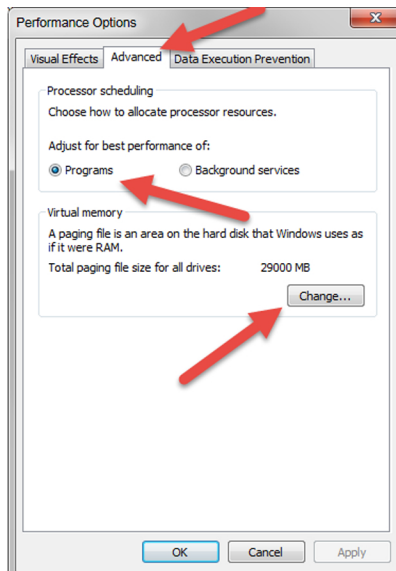
1) Go to Control Panel -> All Control Panel Items -> Performance Information and Tools:



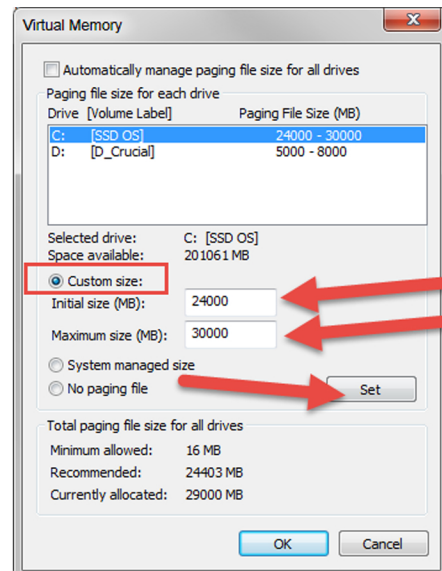
a 1) Click on Adjust Visual Effects, and then check Adjust for best performance:



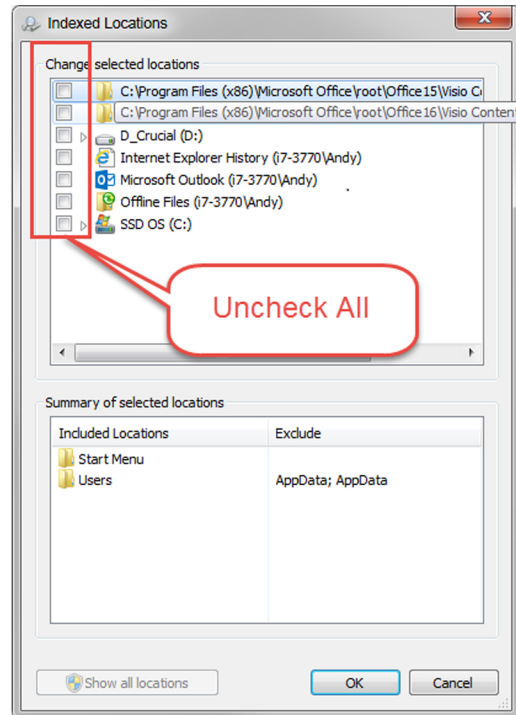
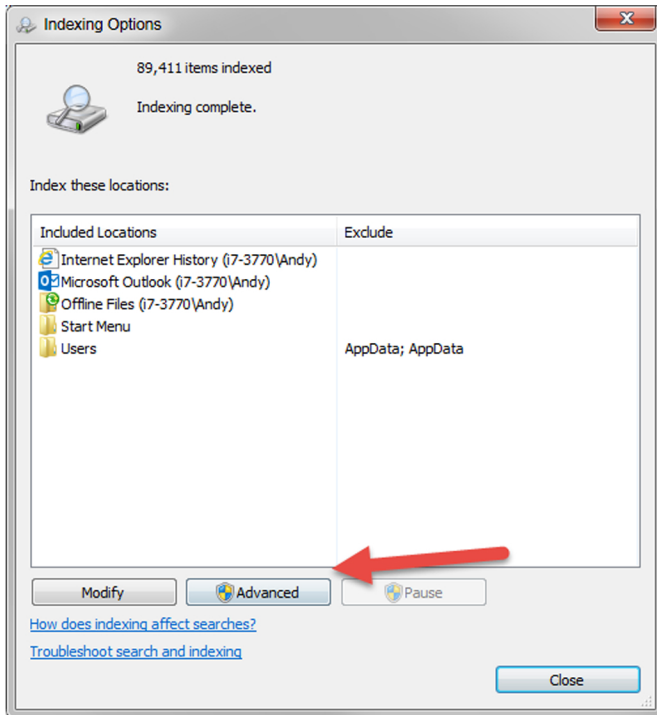
2) Click on the Advanced tab, and select best performance for Programs:



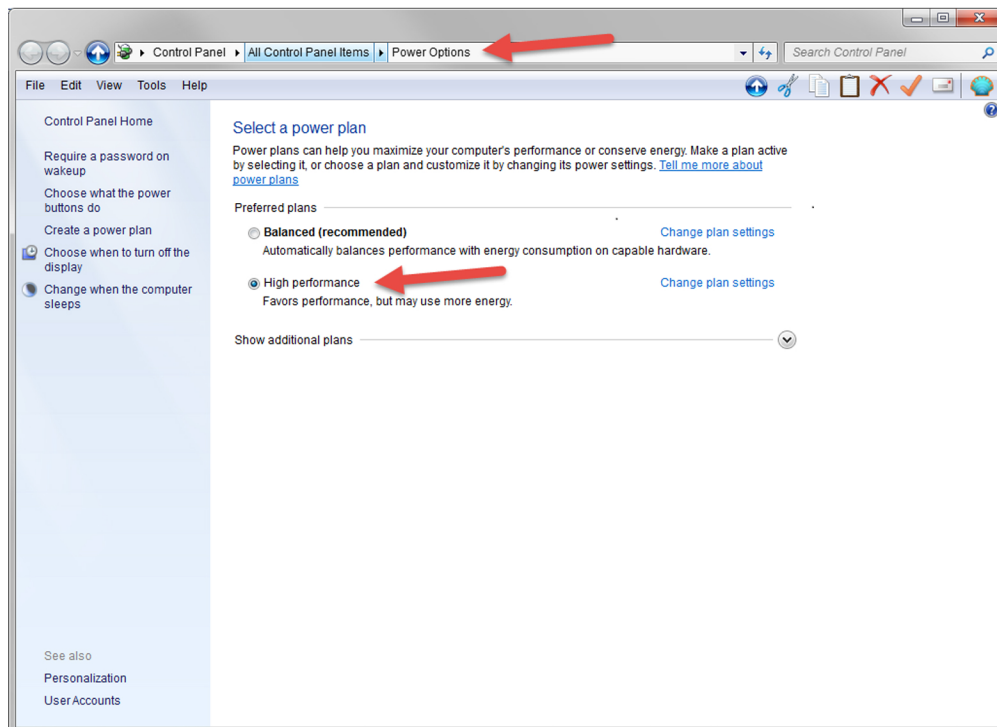
3) Click on Change, and select Custom Size. For Initial Size we recommend 16000 MB to 24000 MB (bigger is better, but we realize hard drives have limited space). For Maximum Size we recommend 30000 MB, click OK:



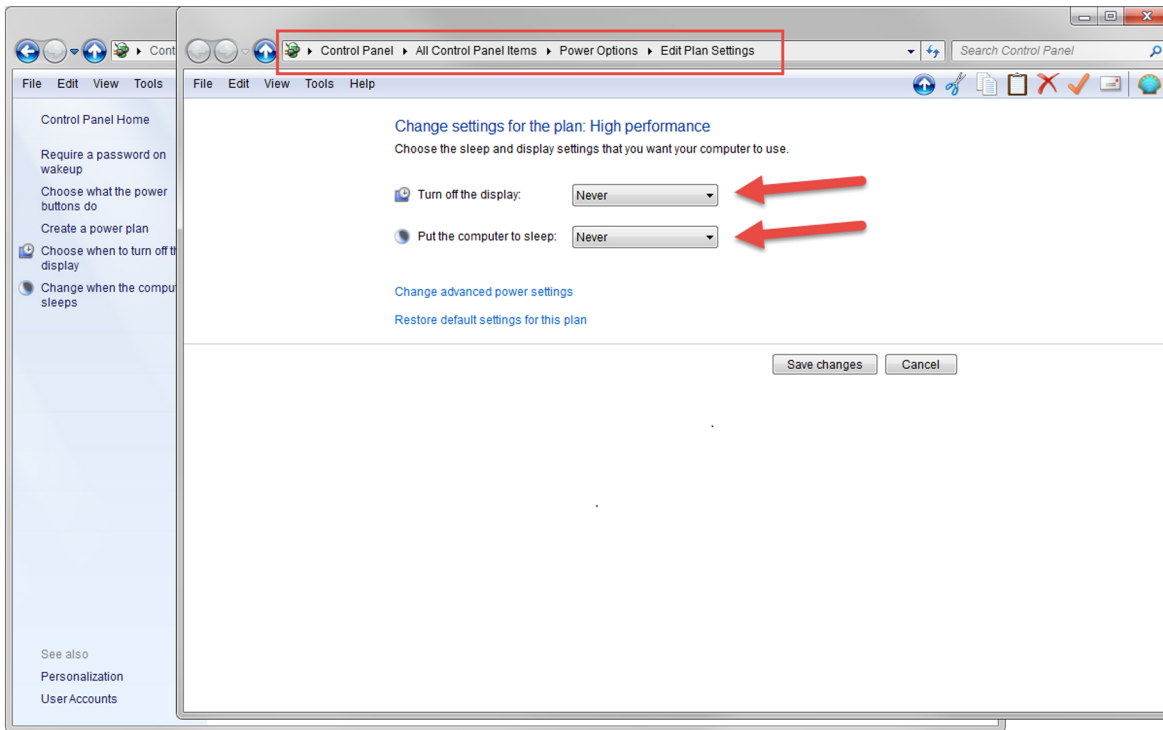
- b** 1) Click on Adjust Indexing Options, then click Advanced: 2) Then click on Modify, and UNCHECK all to stop indexing from running then click OK:



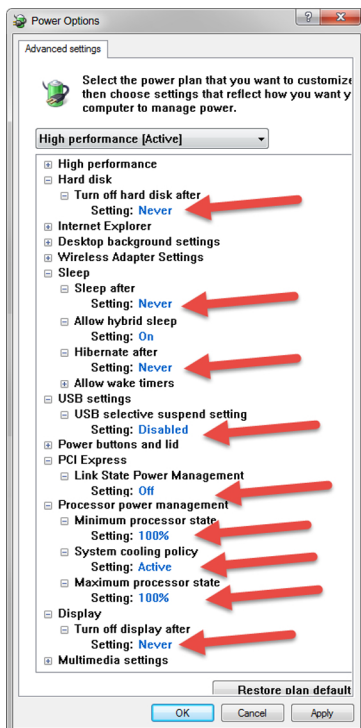
- c** 1) Click on Adjust Power Settings, and then choose High Performance. Then click on Change Plan Settings to the right of High Performance:



2) Set both to Never. Then Click on Change Advanced Power Settings Just below there:



3) Now, click on Change advanced power settings and set as shown in the following picture (you will need to scroll up and down or use the arrow keys to move up and down through the list):



Step 3:

1) Restart your computer for all of the settings to take effect.