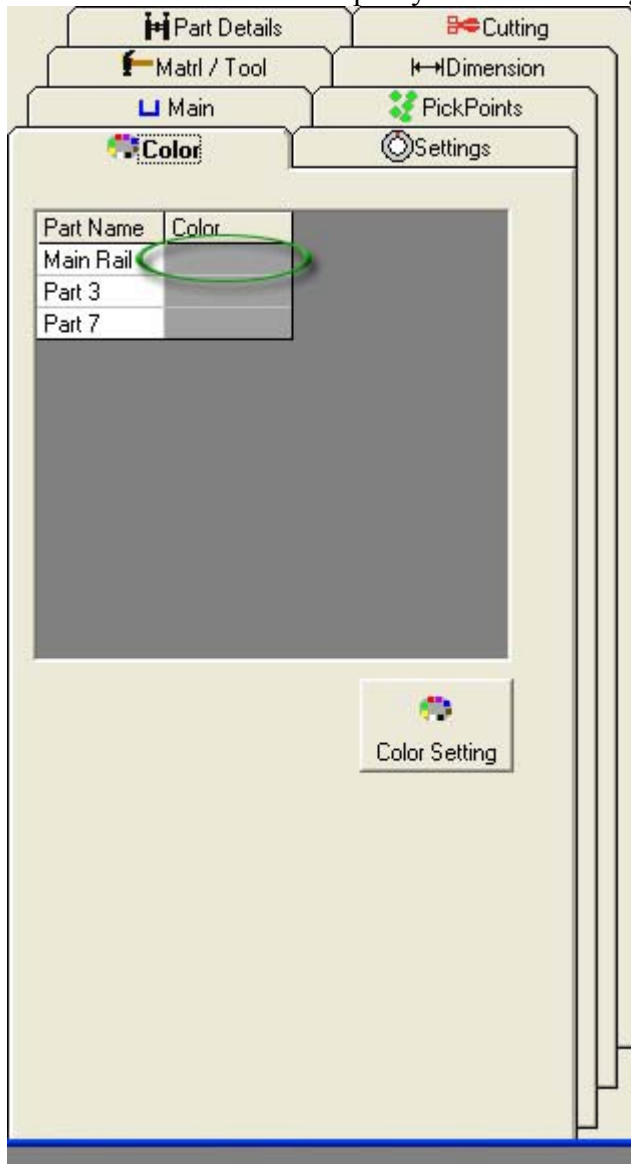


Changing the color of a part

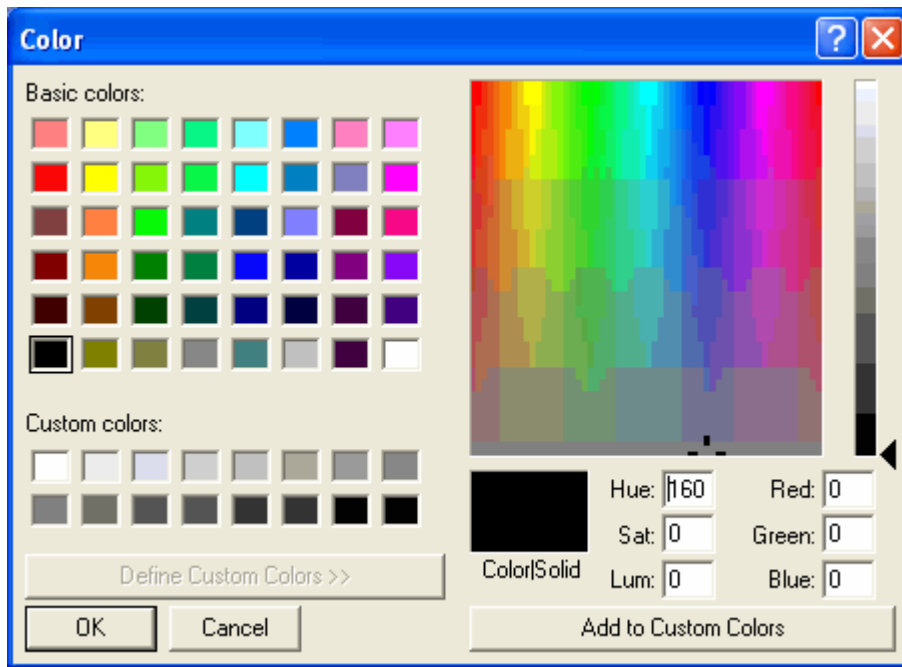
This thread is to show how to change the color of a part in the assembly.

Select the **"Color"** tab.

Select the **color cell** of the part you wish to change:



Select the **color in the color window**. Press **"Ok"**



Trick: Select the "Color Setting" command button:



Now **select the color you wish to use as a default**. Select the **color cell in the part list**. Instead of selecting a color and then "OK", just hit the "Cancel" command button. This will allow the default color to be used.