

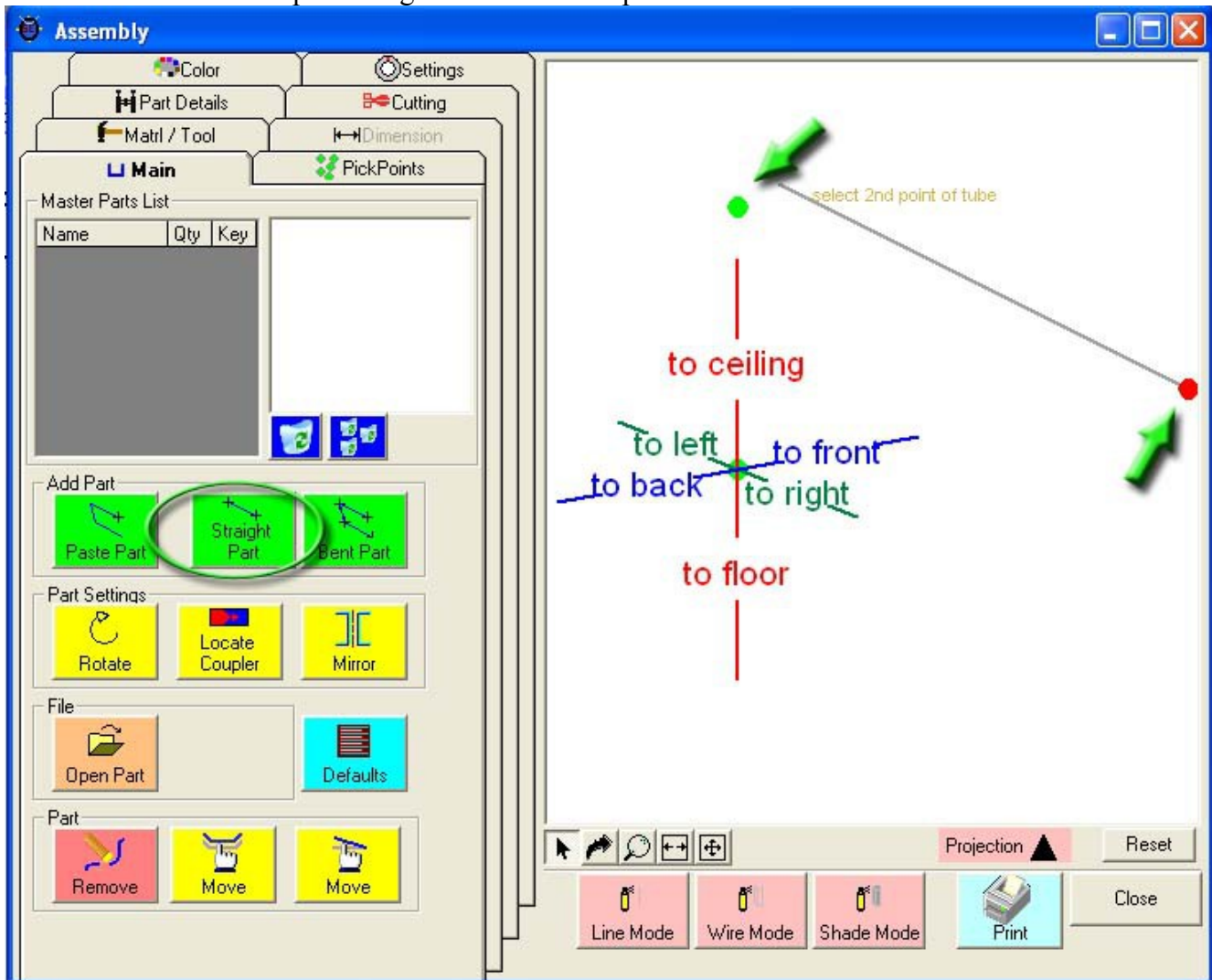
Creating a Straight Part

Creating a Straight Part

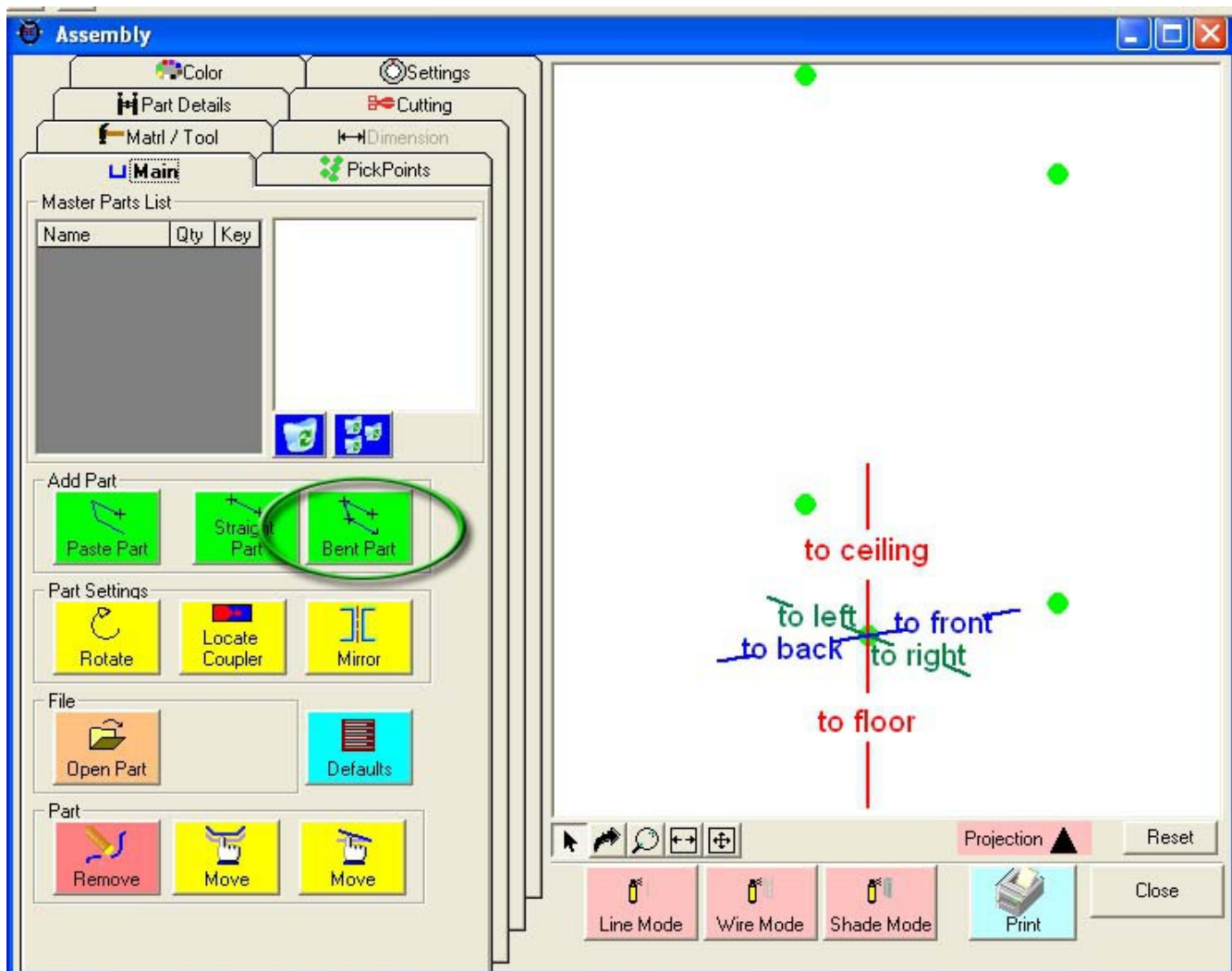
A "Straight Part" is a part defined as not having any bends.

Select the "**Straight Part**" command button.

Select 2 "**PickPoints**" representing the 2 ends of the part.



NOTE: Any PickPoints can be used for creating parts. These include the ones created by the user (green color) or the ones on the parts (cyan color). There are PickPoints at the center and tangent points of every bend.



NOTE: This is a good example of using the "Right Click for Zooming" and the "Reset" command button.