

Creating an Angle Dimension

Creating an Angle Dimension

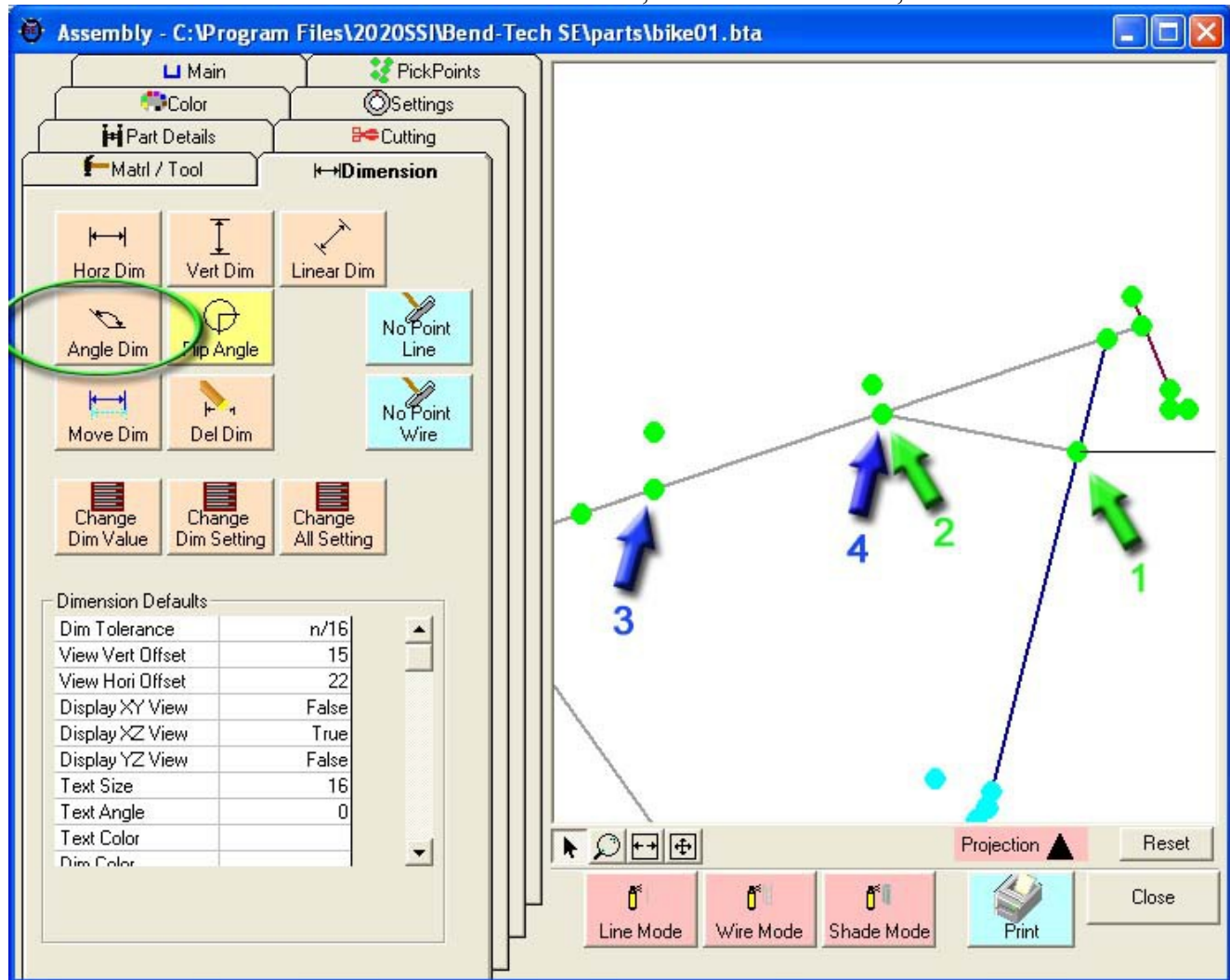
Creating an angle dimension requires a little more finesse than defining a simple horizontal or vertical dimension.

NOTE: In some cases you may need to create an additional PickPoint to have the number of points required.

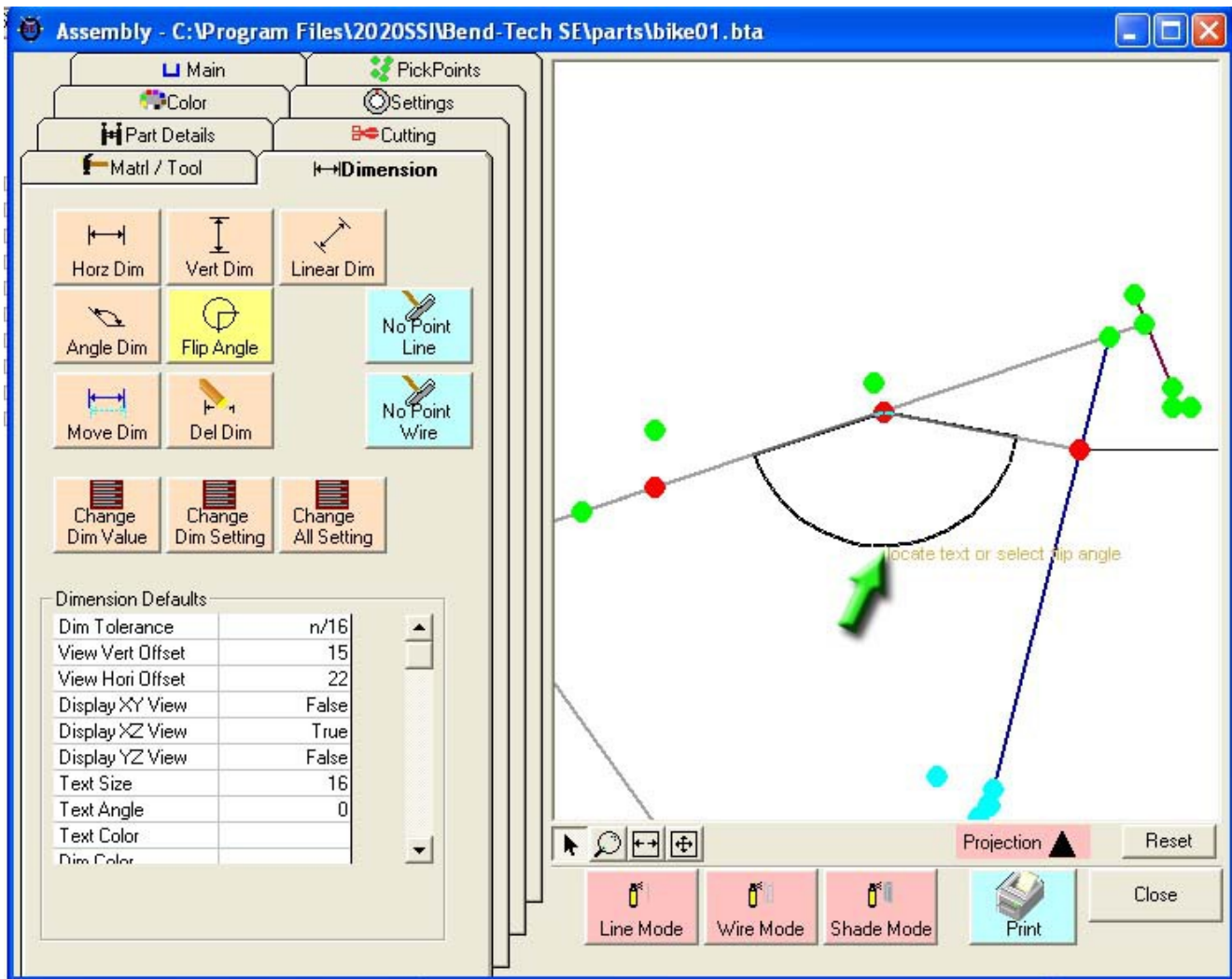
To create an angle dimension you need to pick both ends of the line that represents the angle. The order of the selections is outside-in for each line.

Select the "**Angle Dim**" command button.

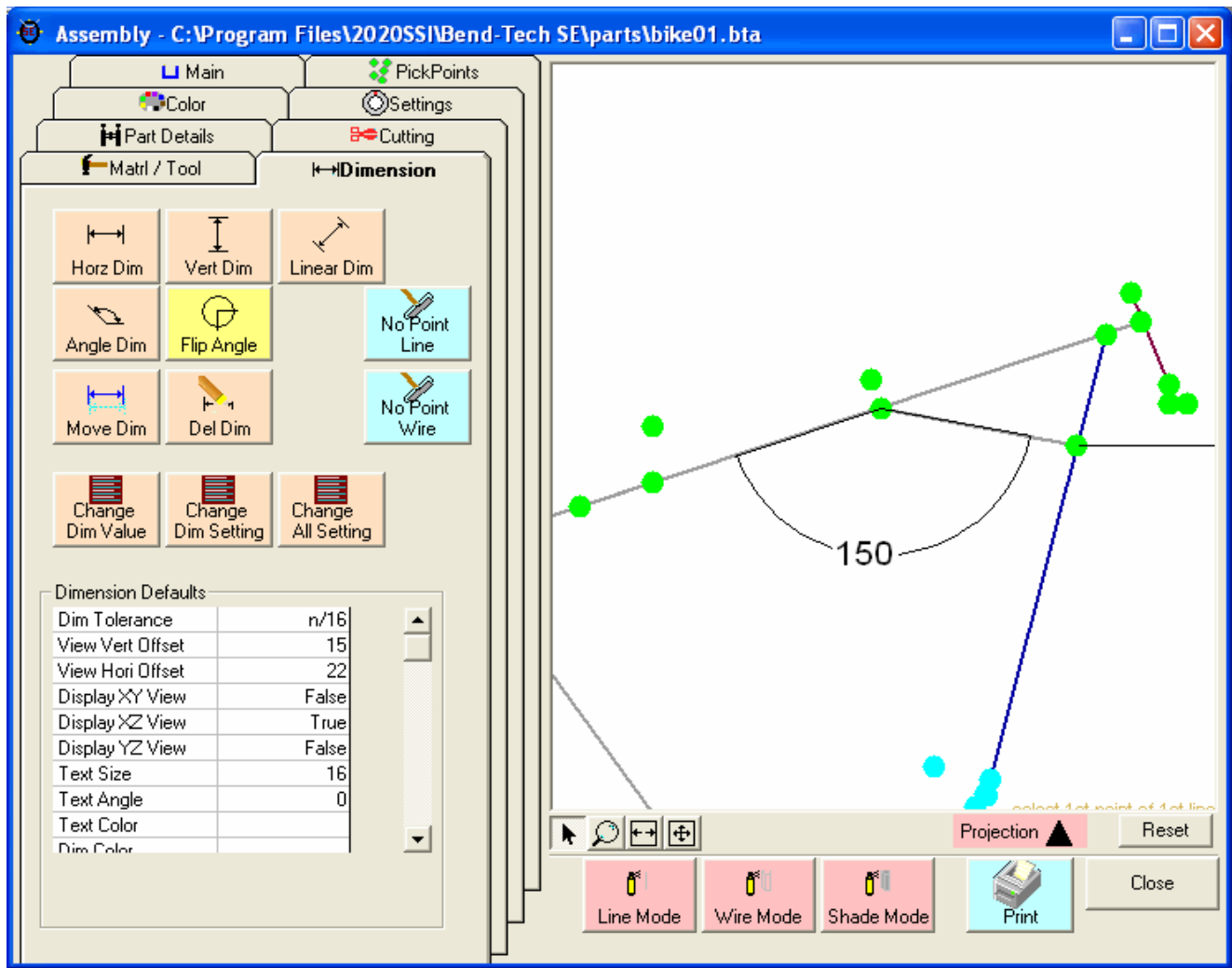
Select the "**PickPoints**" in the order shown. Line one, outside-in. Line two, outside-in.



Select a screen location with your cursor. NOTE: not a PickPoint for this selection.



This next picture will be the end result:



NOTE: Use the "Flip Angle" command button if the dimension displayed was on the wrong side:

