

## Deleting or Removing a Part

This thread will show how to remove or delete a part in the assembly.

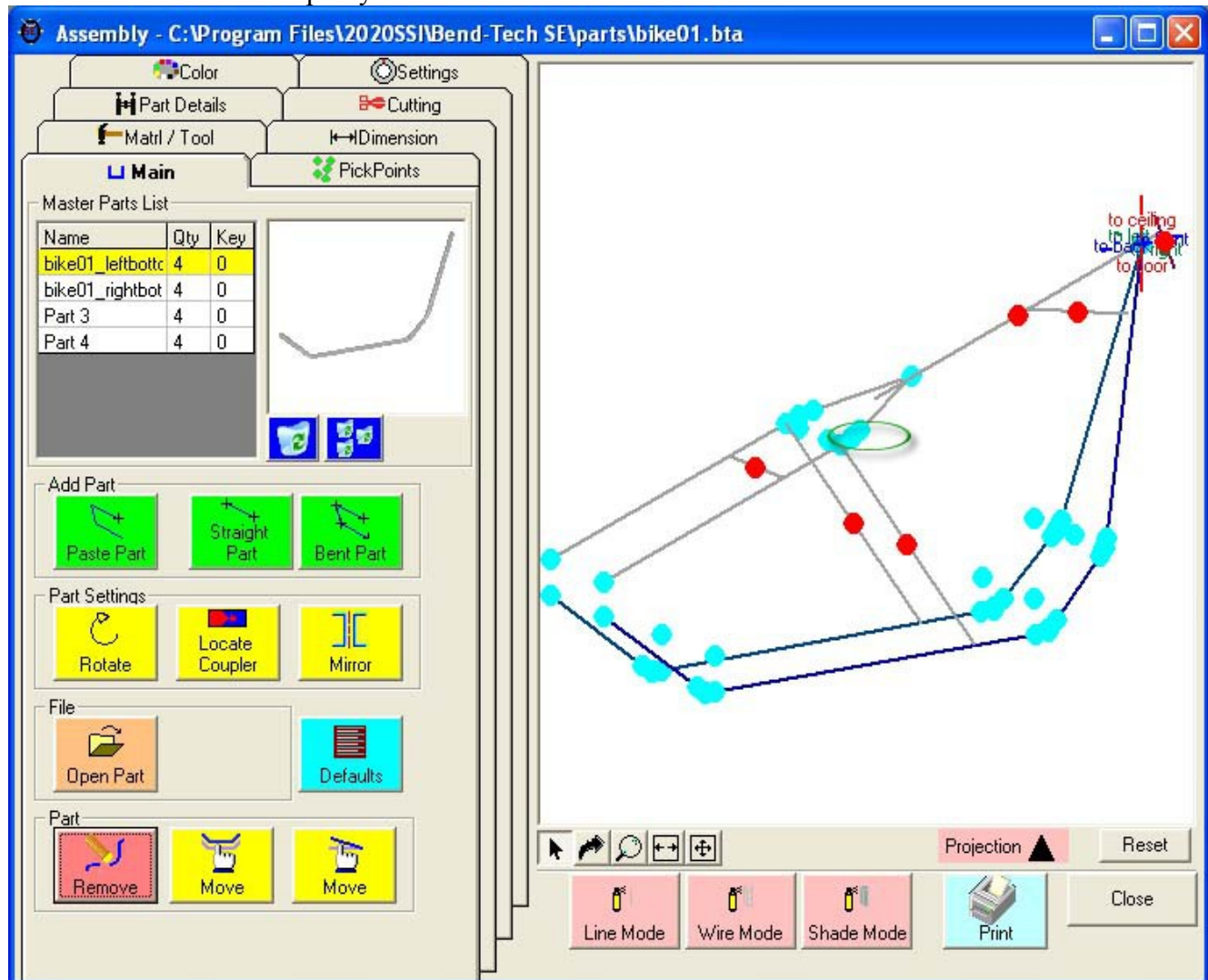
There are 2 different types of removing or deleting:

### 1st type: Removing a part from our assembly.

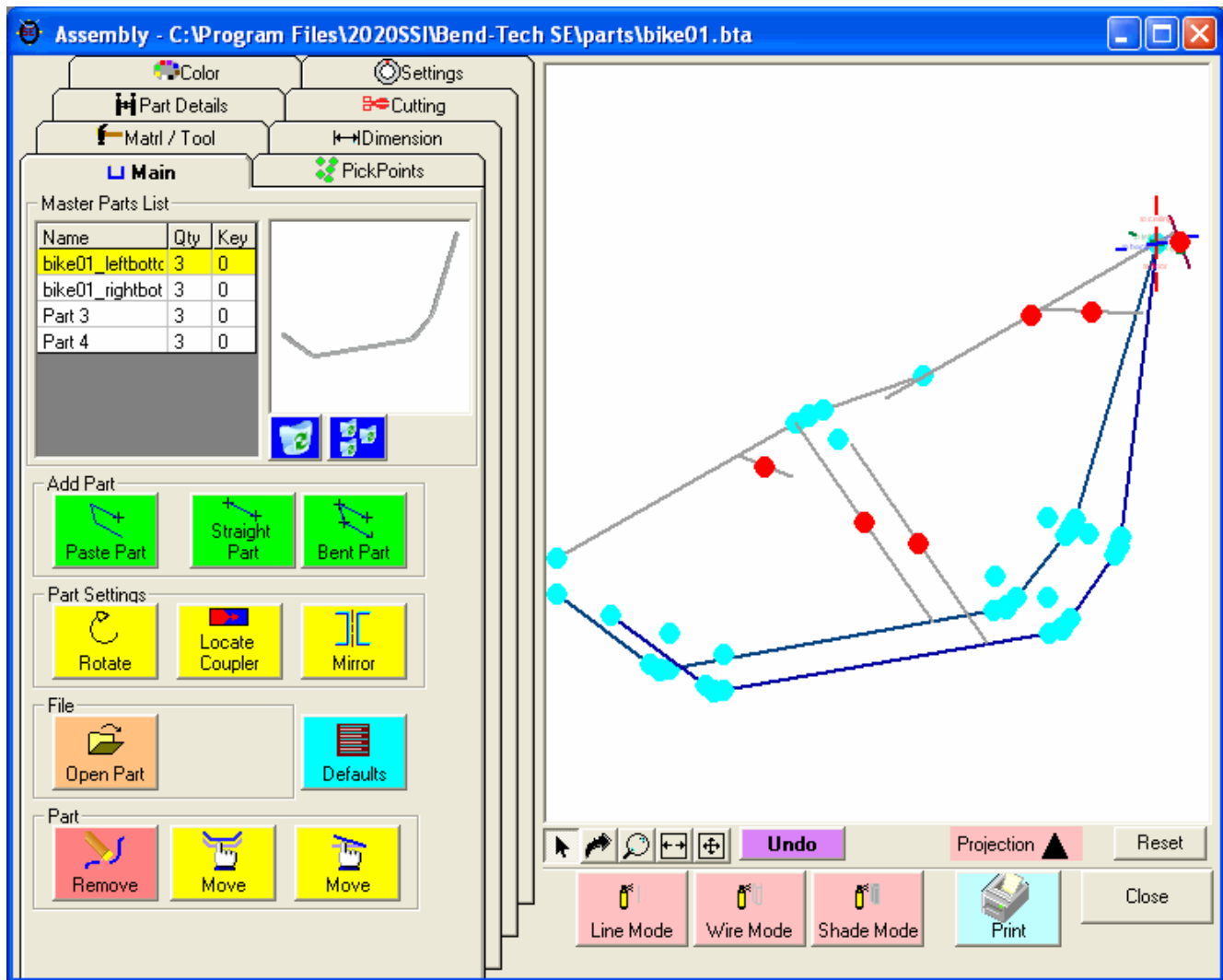
Select the "Remove" command button:



Select a PickPoint on the part you wish to remove:



The part is now removed:



This function does make available the "undo" command button. If you remove the wrong part, select the "undo" command button immediately:

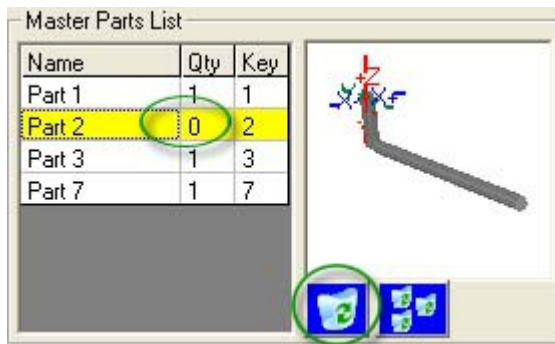
**Undo**

## 2nd type: Removing a part from the master list

---

## 2nd type: Removing a part from the master list

When you remove part from the assembly a "master" part will still be available for later use. If you desire to remove the part from the "master" list, **select the part in the list** as shown below and select the **"Single Trash"** icon.



You can also select the "**Multiple Trash**" icon to remove all of the parts from the master list with a quantity of 0 (not in your assembly drawing).

