

Loading a part into assembly

This thread covers how to load a part that was made as a "template", "custom part", "custom 3d part", "XYZ" or a "sketch" part into the assembly Master Part List.

NOTE: It is recommended parts are created in assembly because of the potential difficulty in rotating a part into the proper orientation!!!

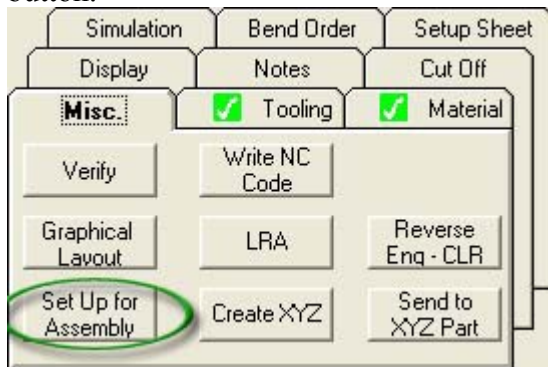
There are 2 methods to accomplish this:

Method 1) **From the part interface**

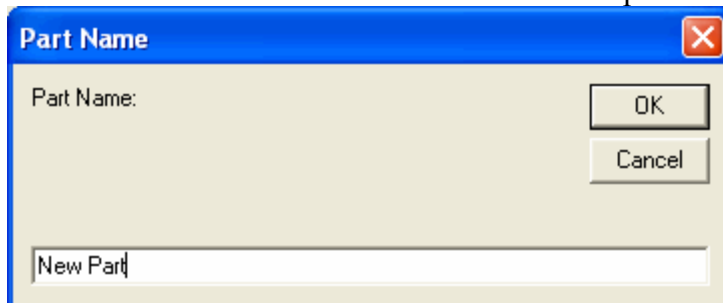
Method 2) **From a saved part file**

Method 1) From the part interface:

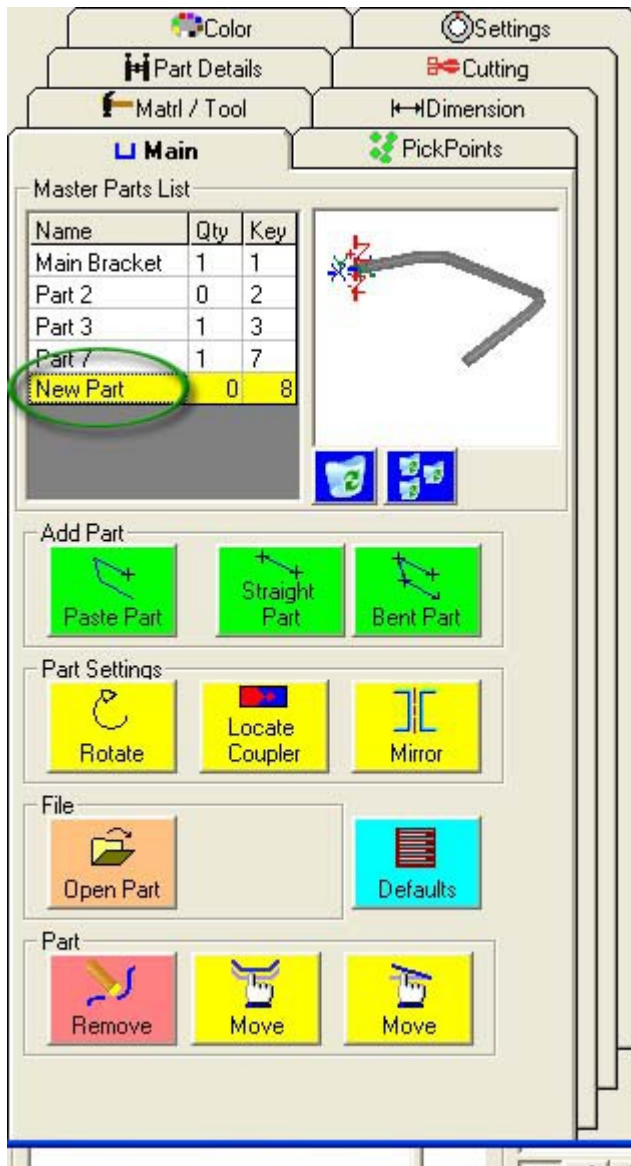
Once the part is complete select the "Misc" tab and then select the "Set Up for Assembly" command button.



You will now be asked for the name of our new part:



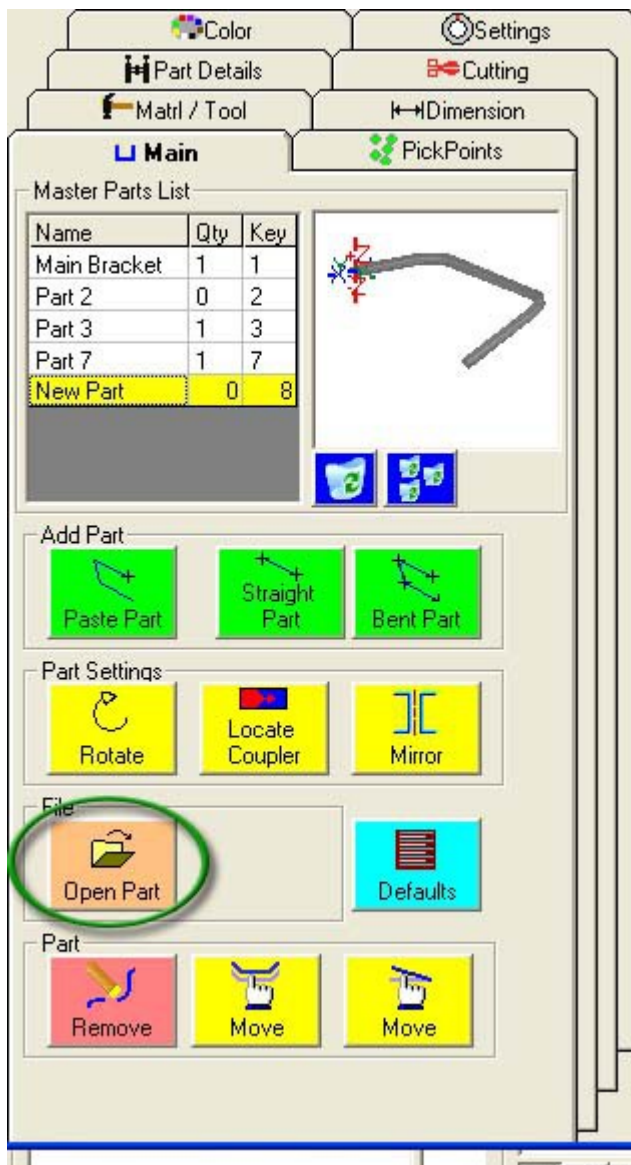
If the assembly interface is not open, Bend-Tech will automatically open it. You will now find your part in the "Master Part List"



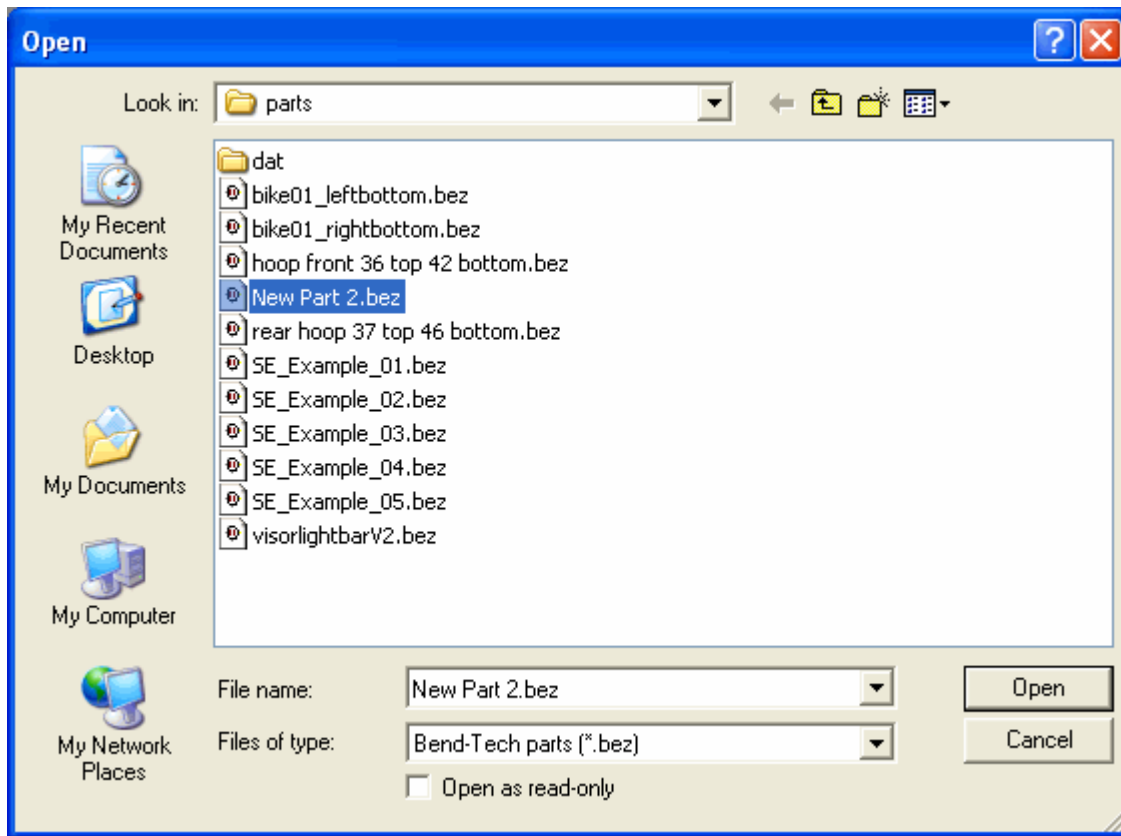
Add it to your assembly by using the "**Paste Part**" command button.

Method 2) From a saved part file:

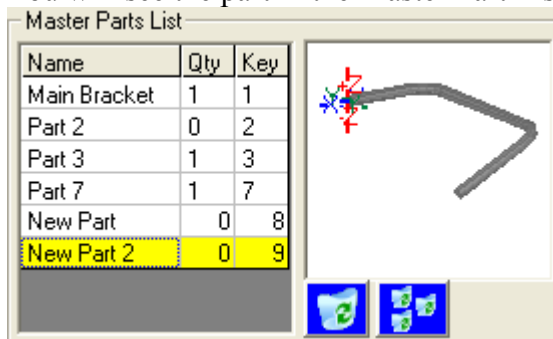
Select the "**Open Part**" command button under the "**Main**" tab in the assembly interface:



Select the part from the list:



You will see the part in the Master Part List.



Add it to your assembly by using the "**Paste Part**" command button.