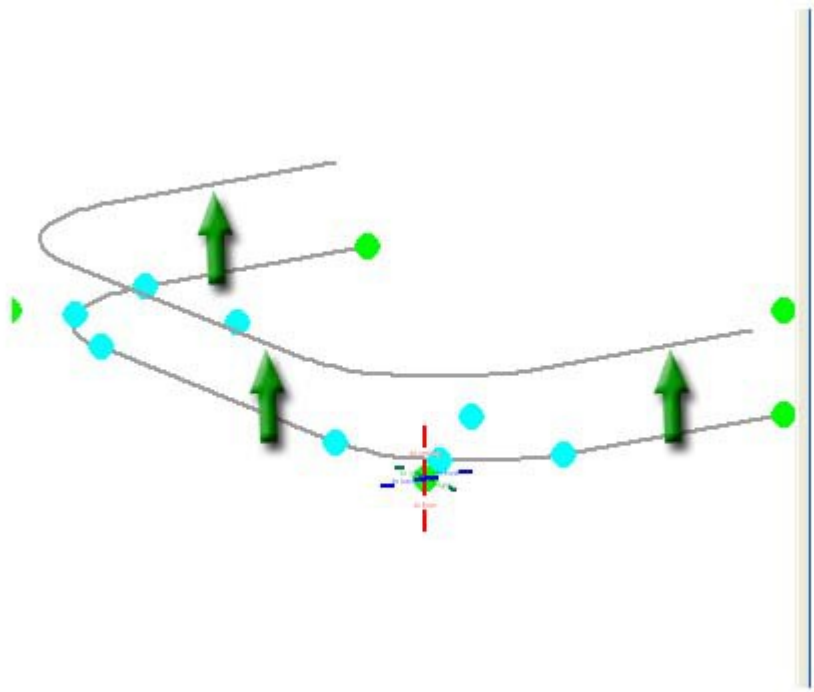


## Moving a Part

---

This thread will show how to move a part in Assembly.

In our example we are going to move the entire part toward the ceiling a couple of inches.

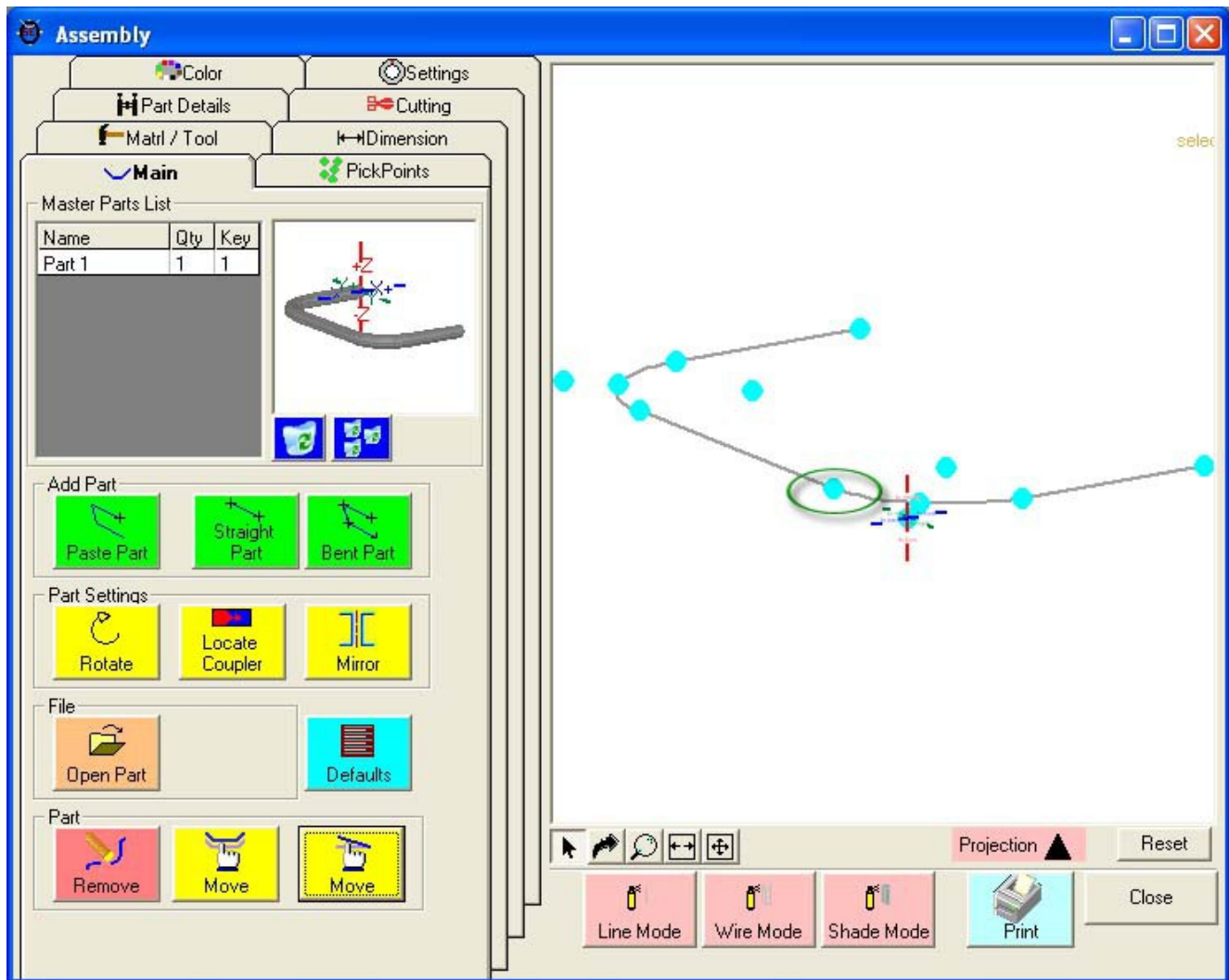


Before we get started, **create a PickPoint where the part is going to move to.** This is not needed if a PickPoint is already at the new location.

Step 1) Select the **1st "Move"** command button:

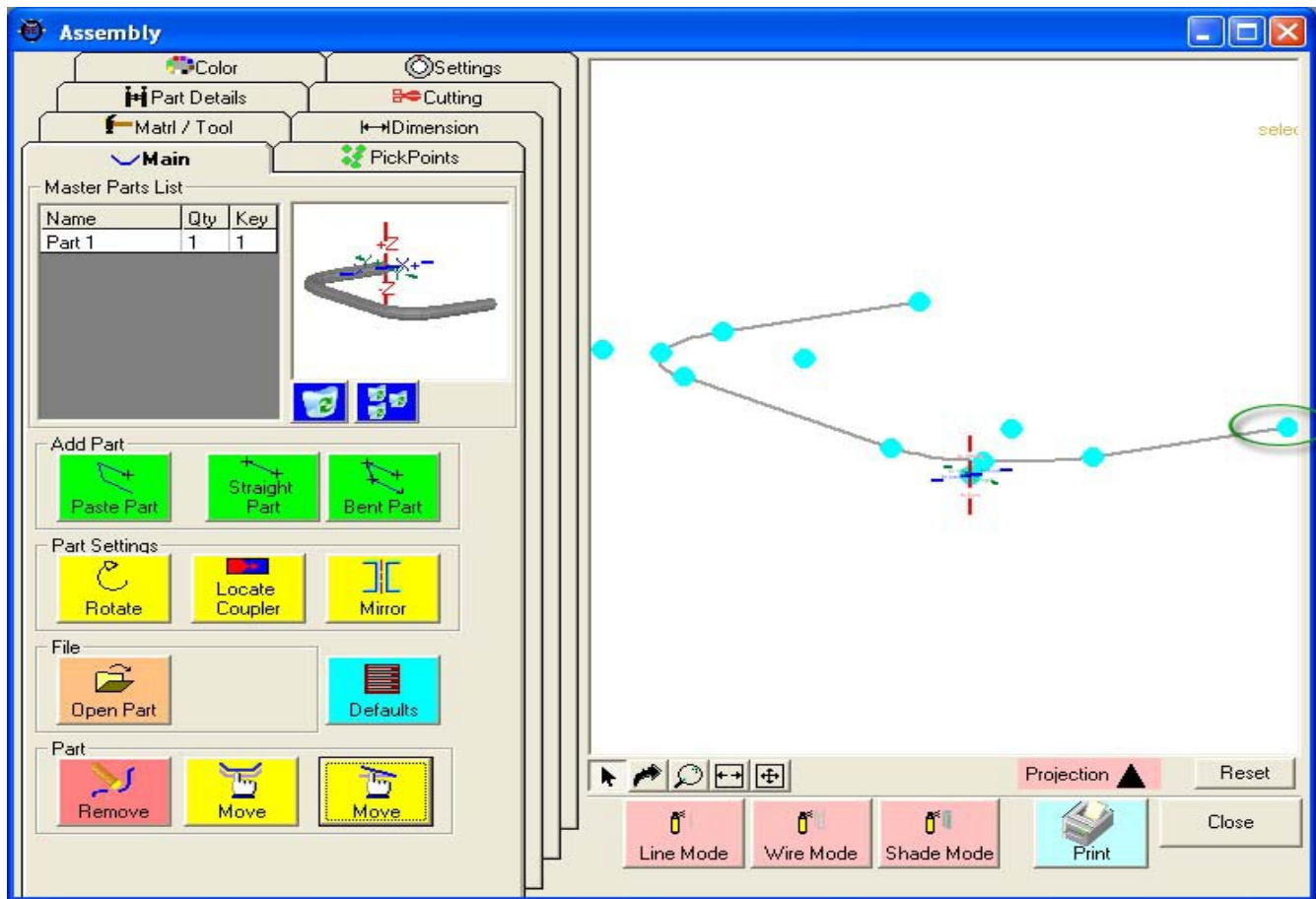


Step 2) **Select ANY PickPoint on the part you are going to adjust.** We are only doing one thing with this step and that is to select the part. Select the easiest point to select the part.



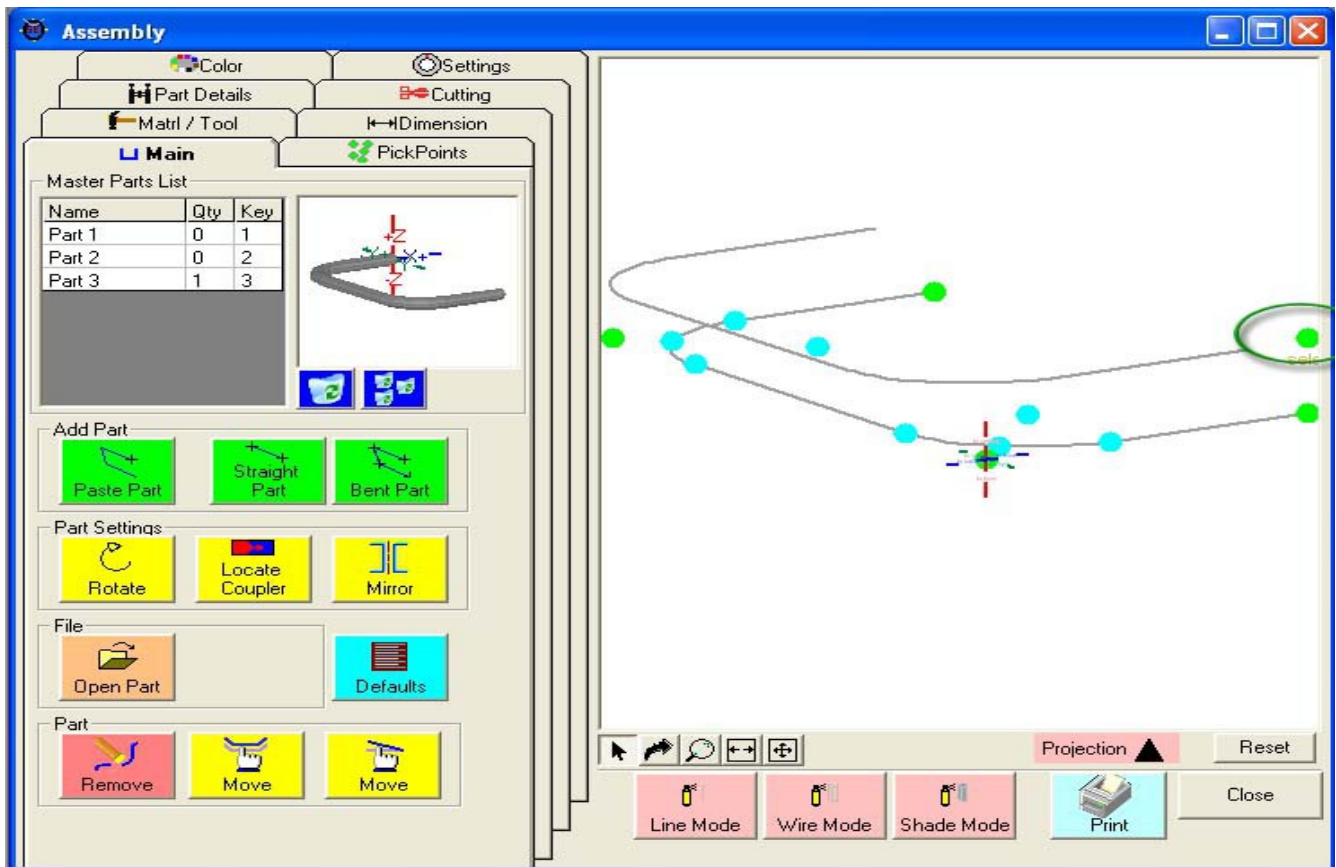
Now the working window will only show the part you have selected.

Step 3) Select the **PickPoint** that represents the new location.



Now you will see your entire assembly again.

Step 4) Select the PickPoint the part is moving to.



Bend-Tech will relocate the part.

