

Paste Part is attached to the wrong end

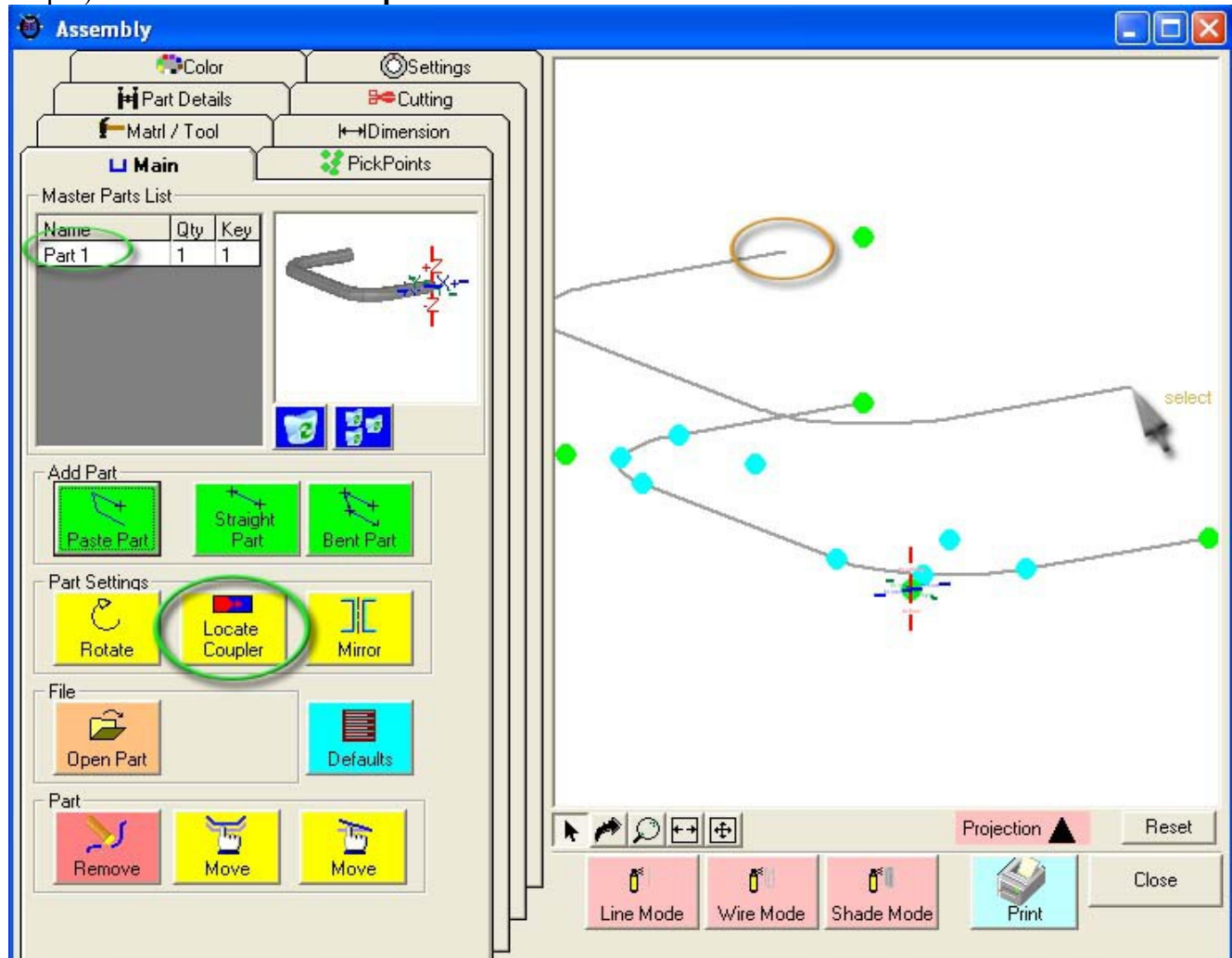
Paste Part is attached to the wrong end.

The end the software uses to attach the part to the cursor is the "start" end of the part.

There maybe times where you want to use the other end or maybe the middle of the part to attach it.

Step 1) Select the part from the "Master Part List"

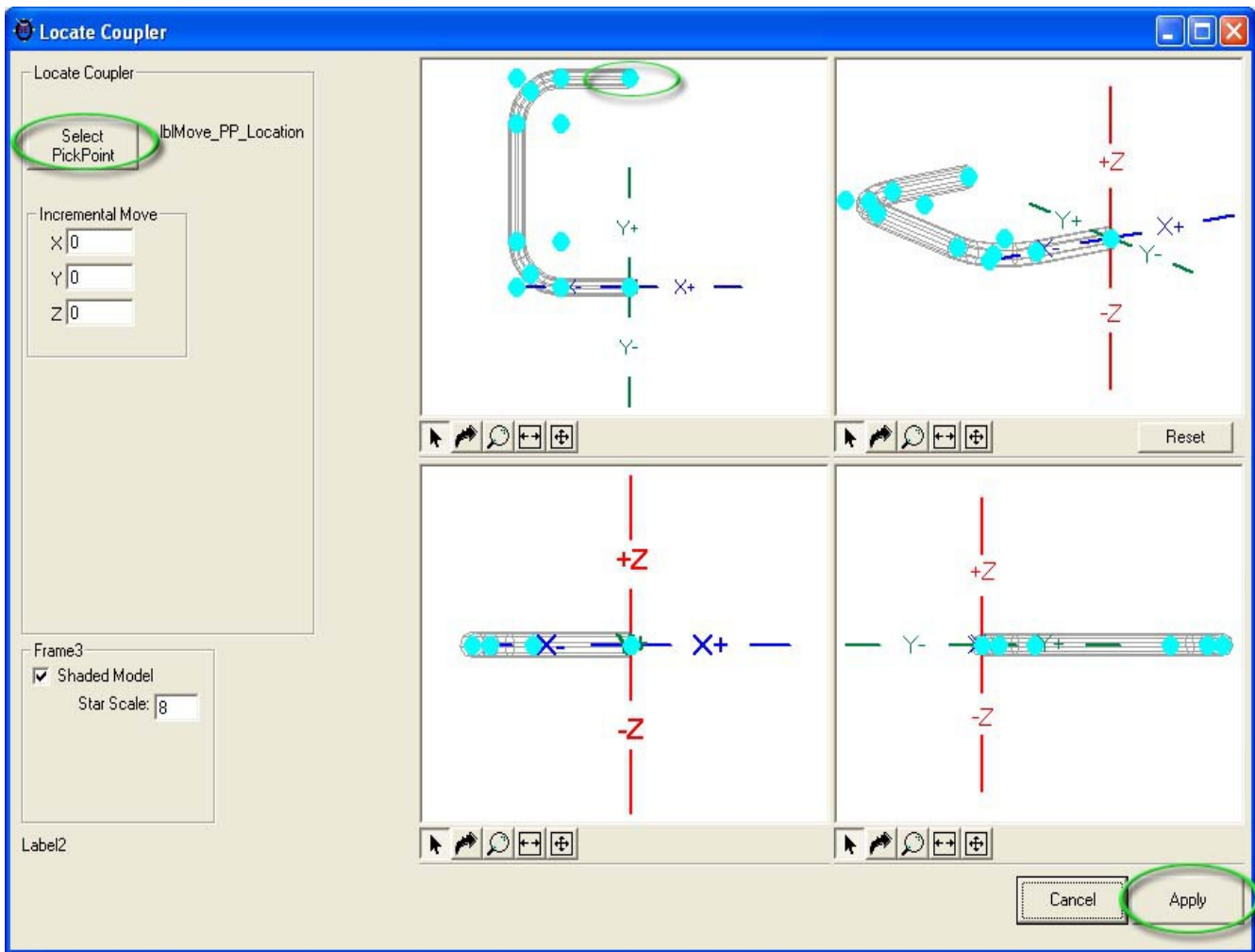
Step 2) Select the "Locate Coupler" command button



Step 3) Select the PickPoint you wish to define as the new attachment point.

Step 4) You can enter a XYZ value on the left side if a PickPoint doesn't exist on the part.

Step 5) Select the "Apply" button



Step 5) Select the "Paste" command button. You will now see the part being tracked from your new location.

