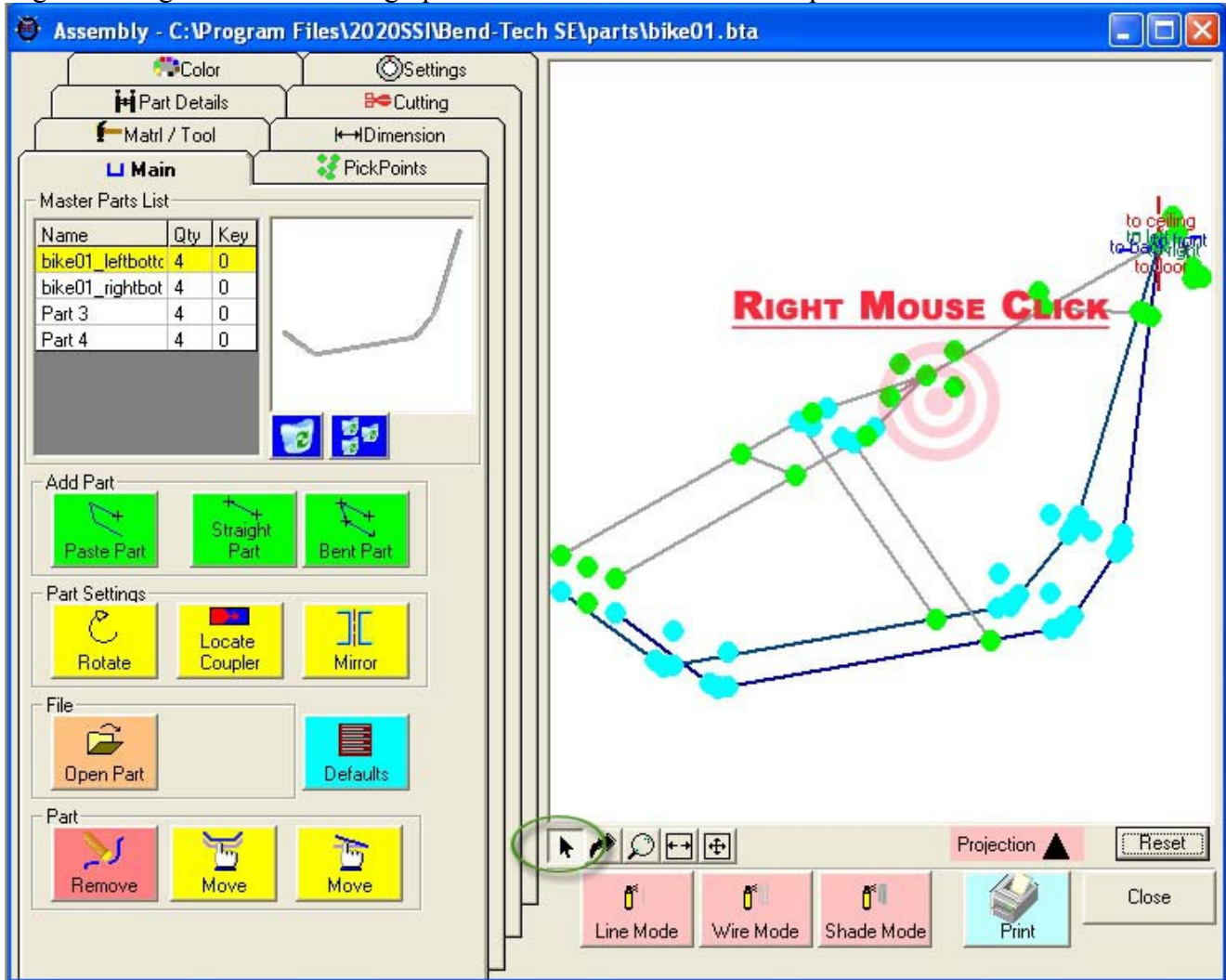


Zooming (HUGE HINT)

Zooming in easily is an absolute must for productivity.

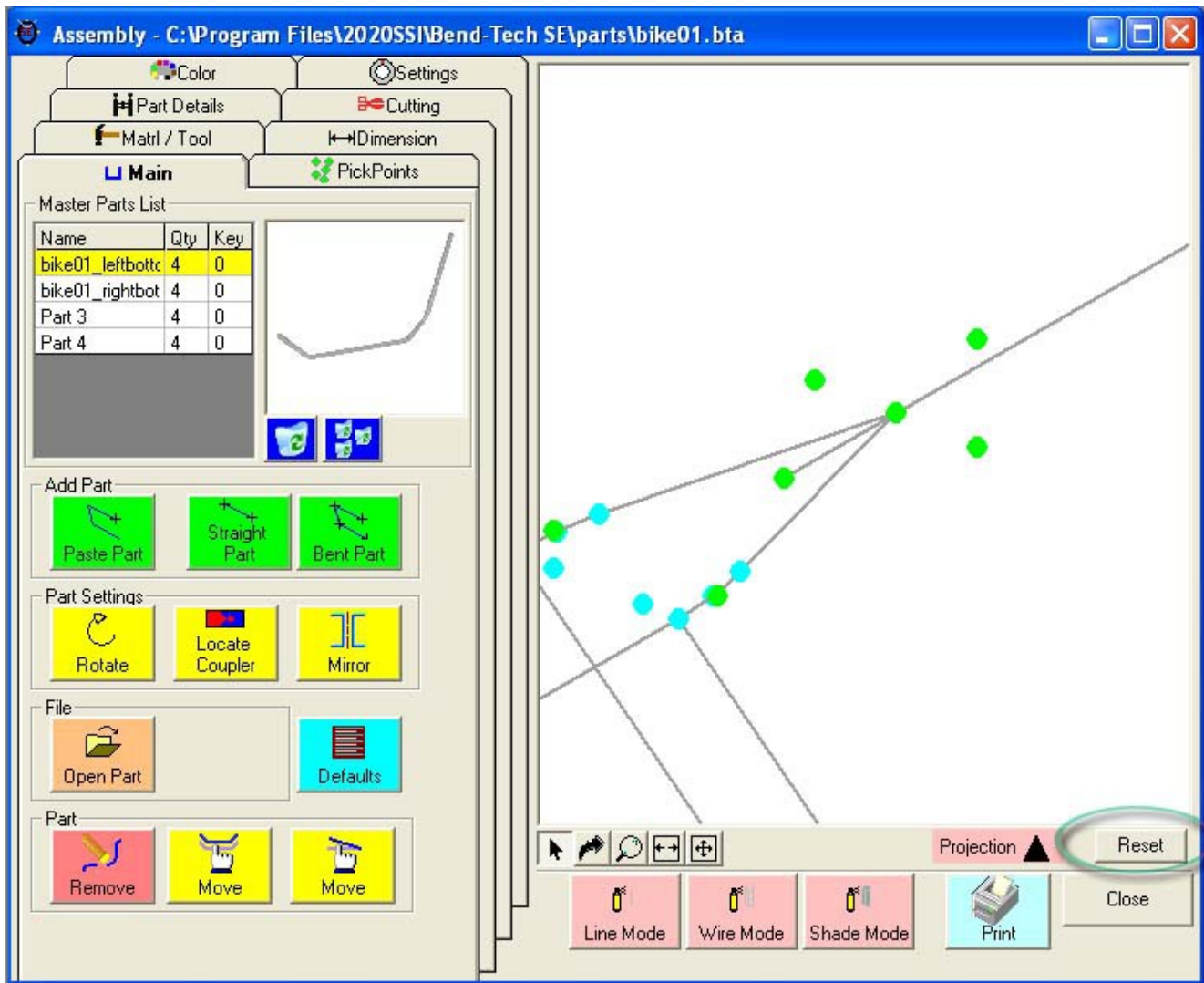
Make sure the window icons are set to the "select arrow".

Right clicking the mouse in the graphics window will "zoom" and "pan" at the same time.



Hint: After the first right click, move the cursor to the center of the screen and continue to right click.

Use the "Reset" icon in the lower right hand corner to auto-scale back to your starting scale.



NOTE: Hold the "Shift" key down while using the right mouse button to zoom back out 1 step at a time.