

## Reverse Engineering with the wrong CLR

Reverse Engineering with the wrong CLR.

There are 2 environments where this is important.

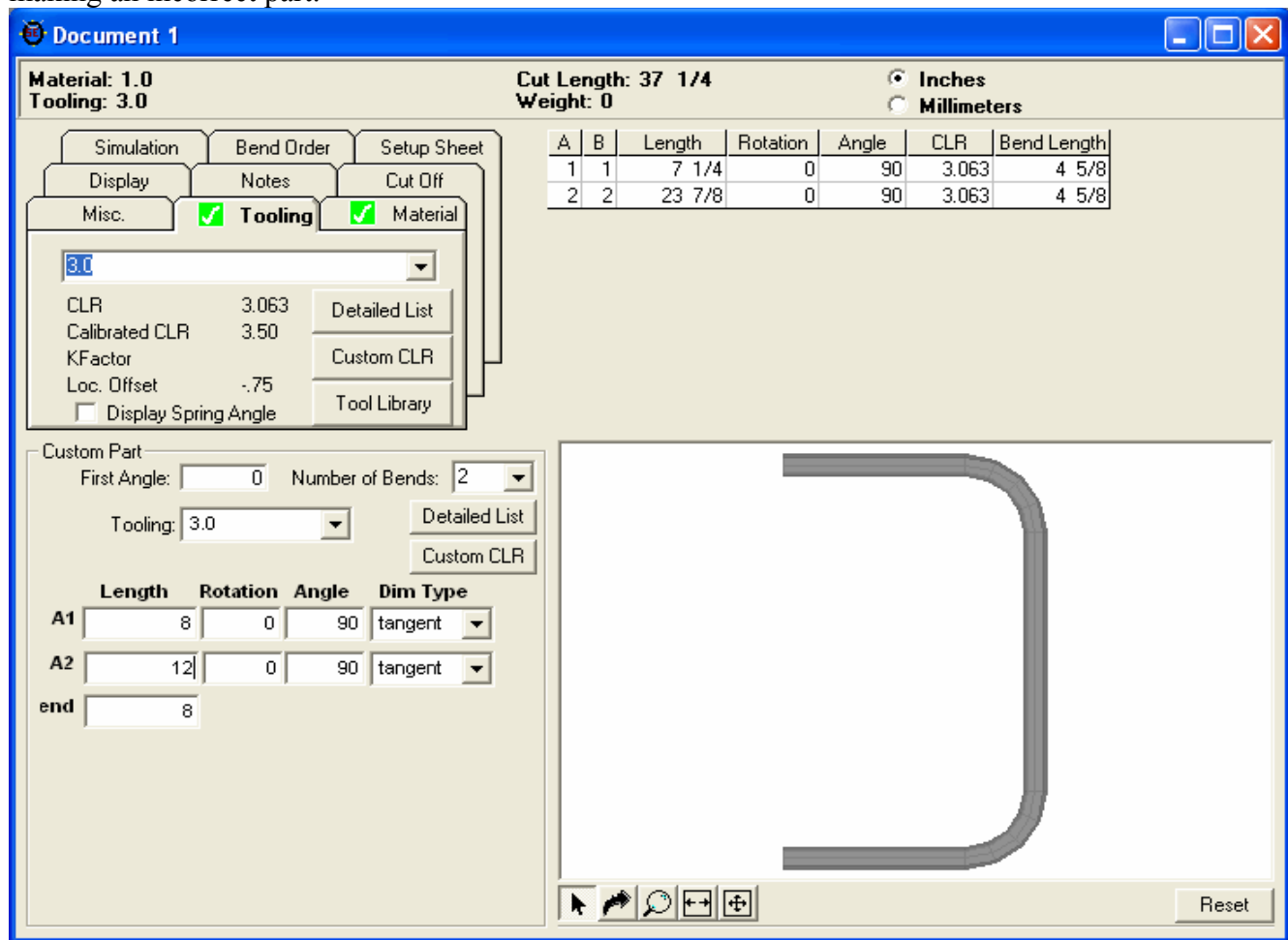
- 1) It is very easy to measure the straight tube lengths, angles and rotation on a pre-existing part.
- 2) If a print gives dimensions of the straight leg lengths and the CLR is not what you have.

**This solution is for Bend-Tech SE customers only!**

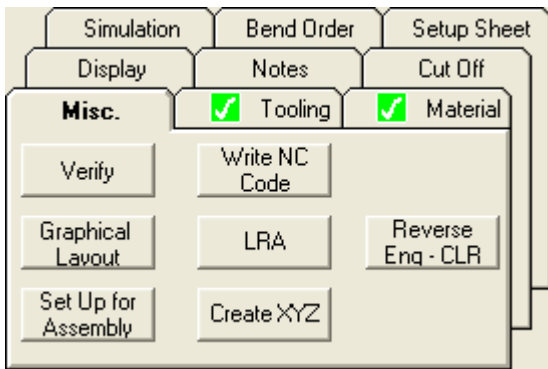
Step 1) Set all the "Dim Type" values to tangent.

Step 2) Select the "Tooling" that you have.

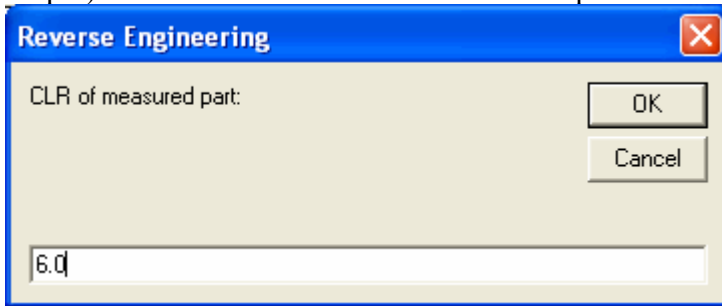
Step 3) Place the "Length" values in that you have on the print or from the part. Note: you will be making an incorrect part.



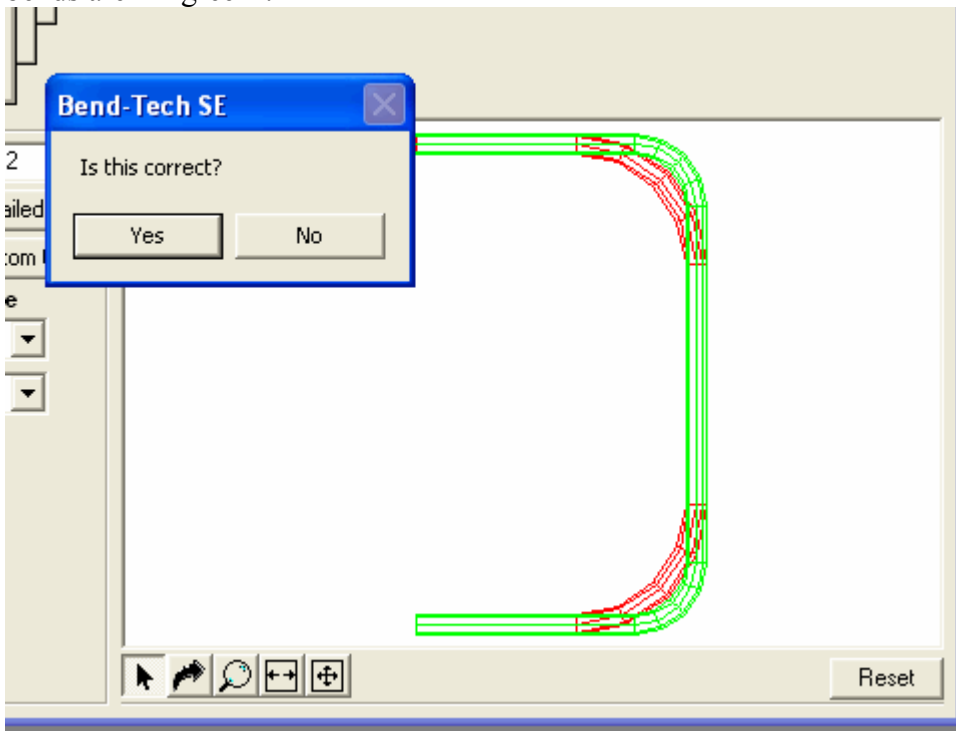
Step 4) Select the "Reverse Eng - CLR" button under the "Misc." tab.



Step 5) Enter the value of the CLR from the print or from the part you are using.



Step 6) Select the "Ok" button if your part looks good. Notice the new bends are in "red" and the old bends are in "green".



Note: Your "Length" values have been updated because the change in the radius.

Custom Part

First Angle:

Number of Bends:

Custom CLR

	Length	Rotation	Angle	Dim Type
A1	<input type="text" value="10.937"/>	<input type="text" value="0"/>	<input type="text" value="90"/>	<input type="text" value="tangent"/>
A2	<input type="text" value="17.874"/>	<input type="text" value="0"/>	<input type="text" value="90"/>	<input type="text" value="tangent"/>
end	<input type="text" value="10.937"/>			