

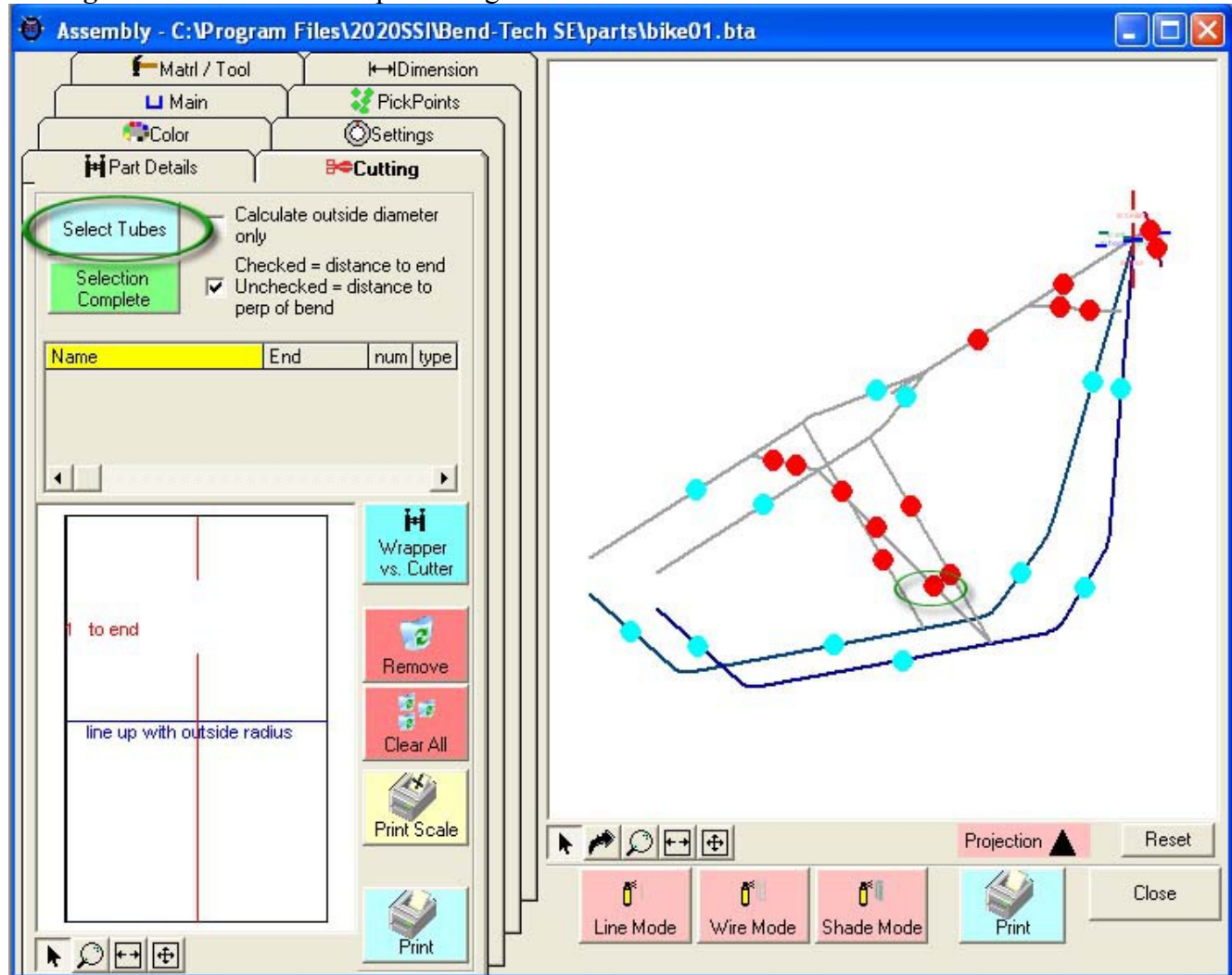
## cutting a tube to "multiple" tubes

Following are the steps to setting up the cutting for multiple tubes.

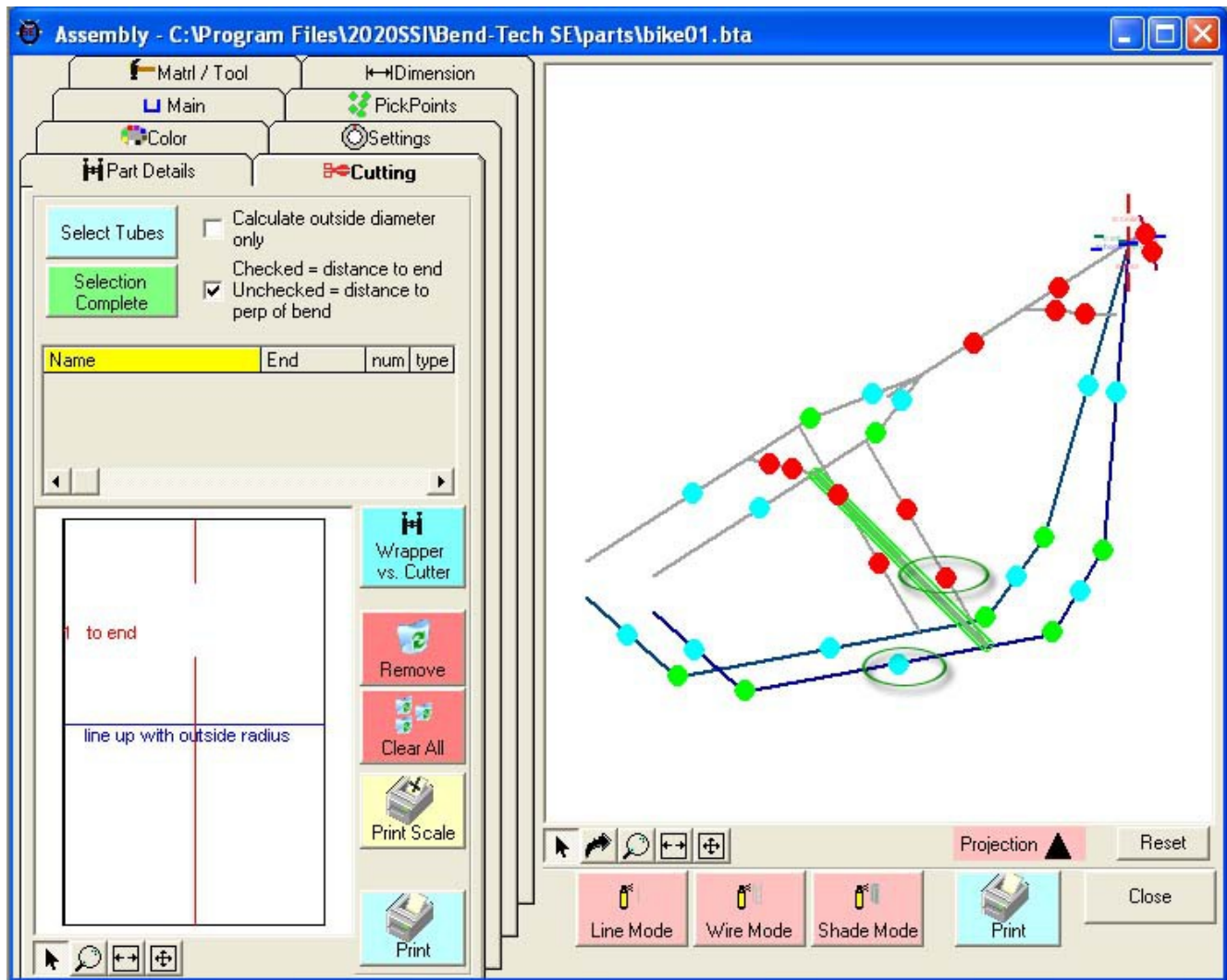
Step 1) Select the "Cutting" tab

Step 2) Select the "Select Tubes" command button

Step 3) **Select the tube you are going to cut. Note: Make sure to select the PickPoint closest to the cutting end.** You will find our part turn green in color.



Step 4) **Select the dot(s) representing the tube section(s) that our part is going to be cut to.** You will find the intersecting tubes will turn red.



Step 5) Select the "**Selection Complete**" command button.

Step 6) Select the "**Print**" command button.

Notice the intersection now has a black and a blue cut marks showing the inside and outside of the material where each meets the intersection part(s).

