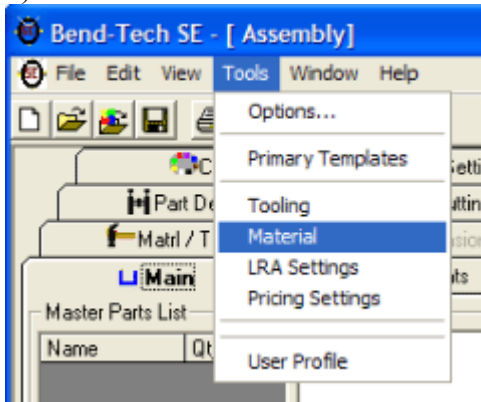


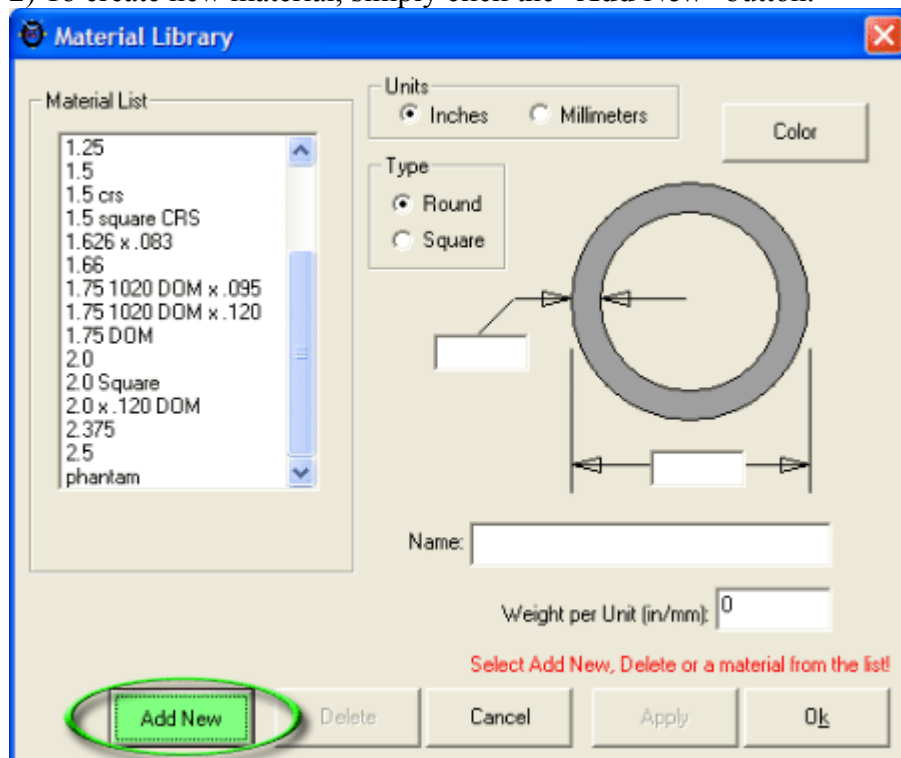
Release 4.x features

One of the features included with version 4.0 is square tubing. In order to make use of it, you will need to "Add New" in the materials library or modify existing material.

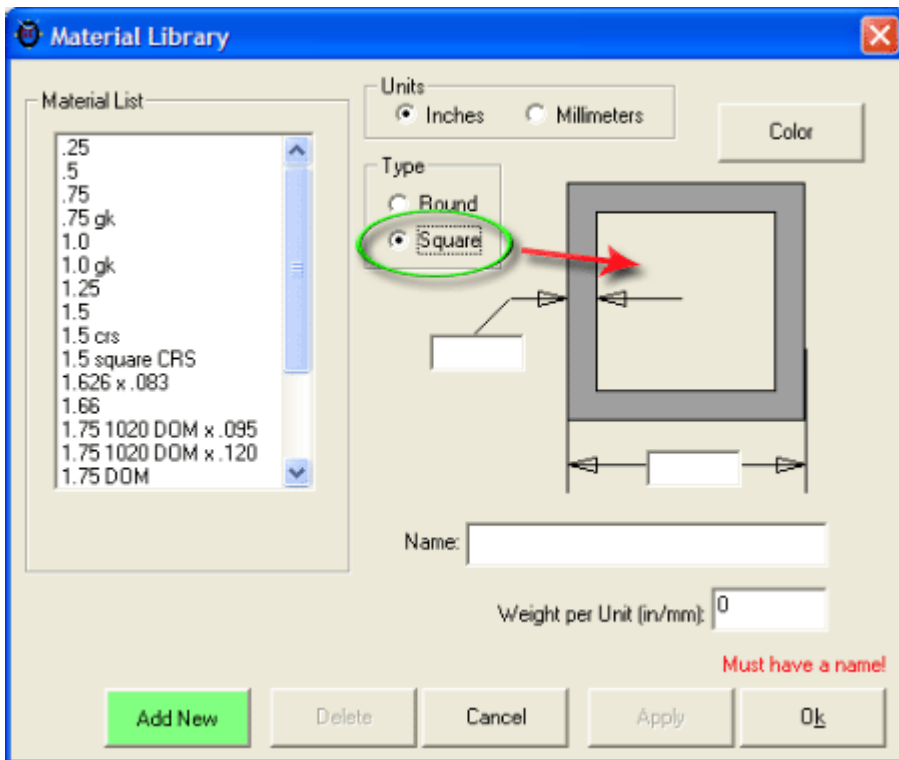
1) Click on "**Material**" in the "**Tools**" drop-down box.



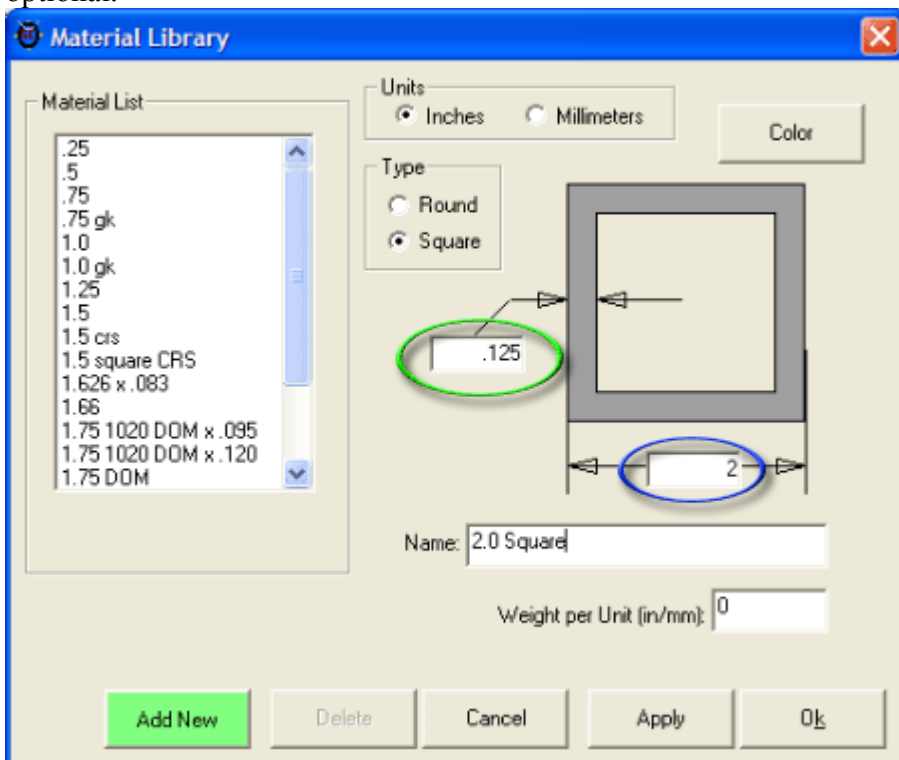
2) To create new material, simply click the "**Add New**" button.



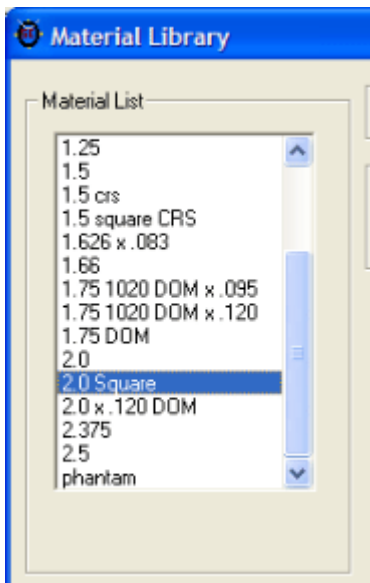
3) Under "**Type**" click the "**Square**" radio button and you will see the cross section turn into a square.



4) Change your units of measure as necessary (found above "Type", then set the thickness (green circle) and width (blue circle). You'll also need to choose a unique name, however the weight field is optional.



5) Click "Apply" and you will see your new material show up in the selection box on the left.



If you want to modify existing material simply select the material you'd like to change from the "**Material List**". Make any changes you like (change to square, set thickness or width, etc) and click "**Apply**". The material will then be updated with your new settings.