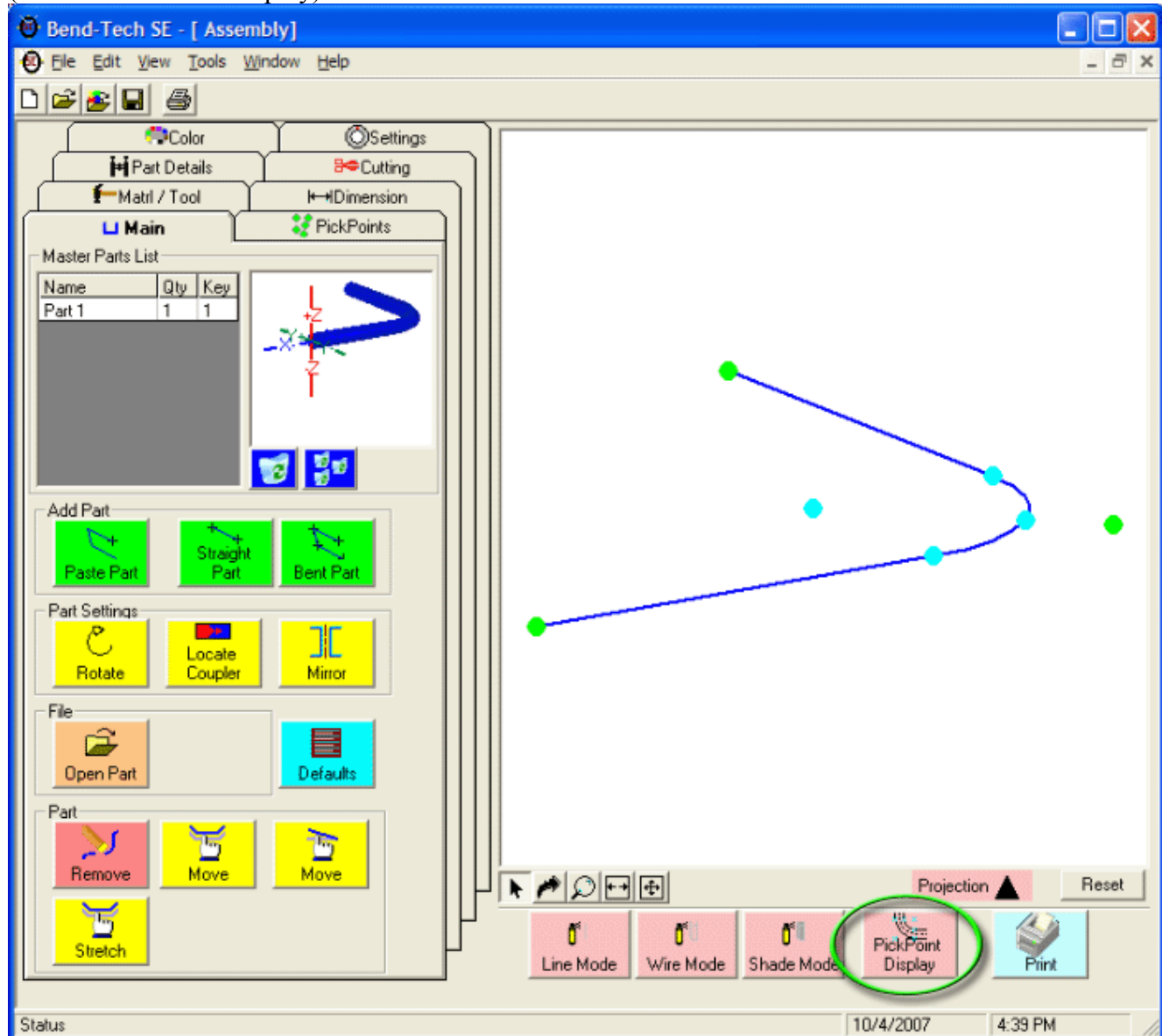


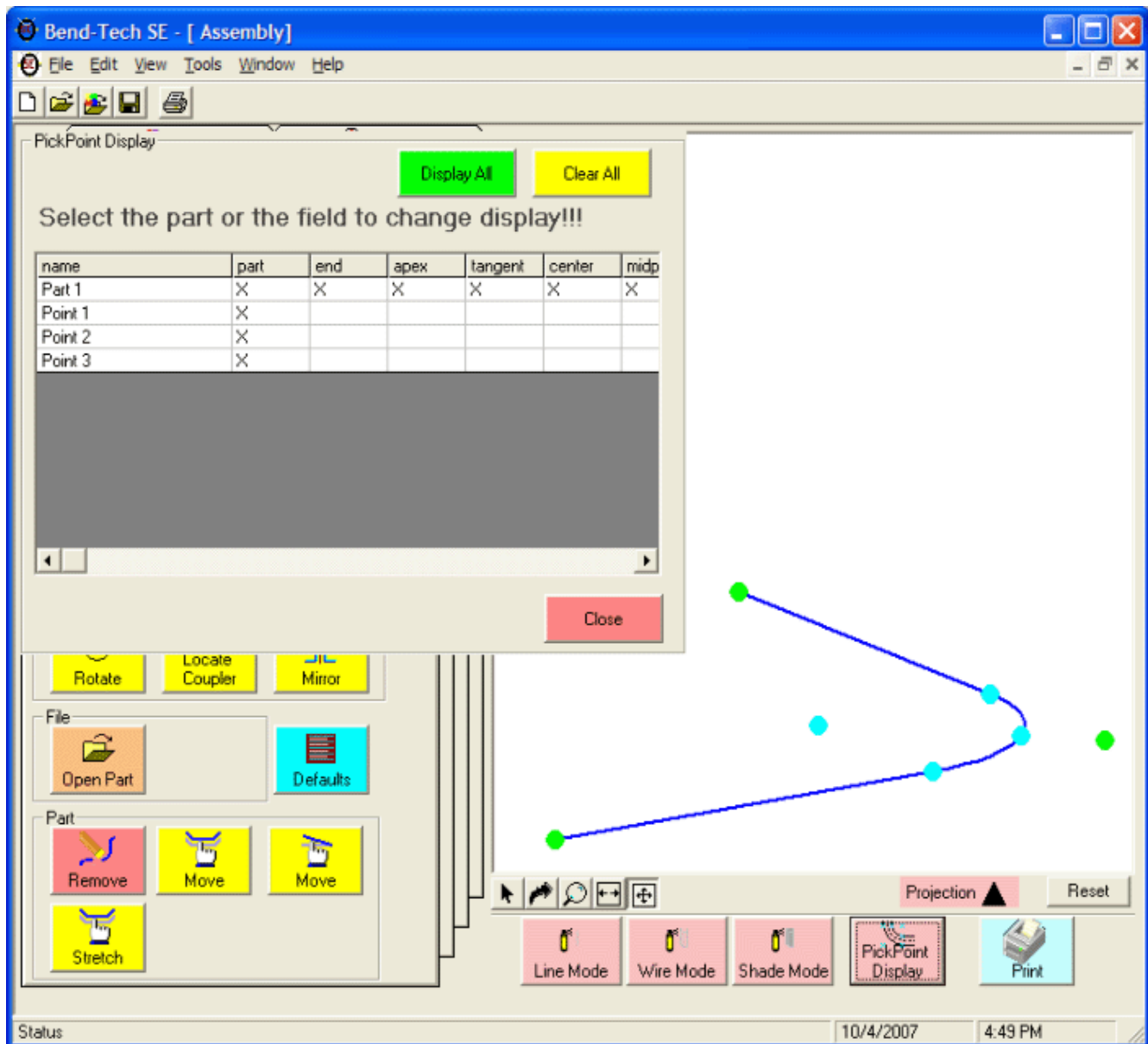
## Pick Point and Part Suppression

Version 4.0 provides the functionality of hiding any number of pick points and/or any number of parts.

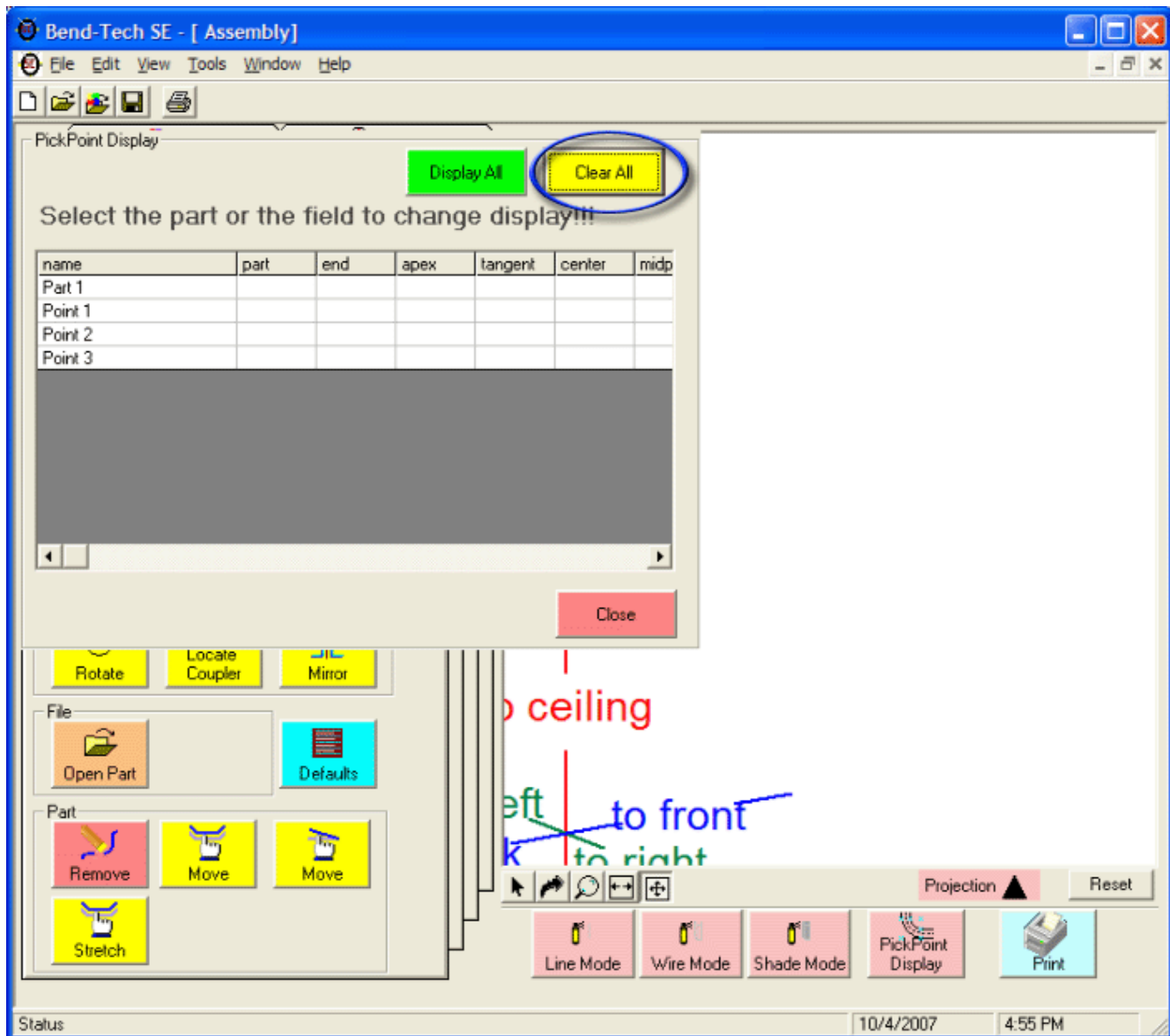
We will use the simple part shown here to demonstrate. The button used to suppress pick points/parts (called "Pick Point Display") is circled.



When you click on the "Pick Point Display" button, the following window will appear (note: we adjusted the location of the part in order to fit it and the "Pick Point Display" window in one picture).

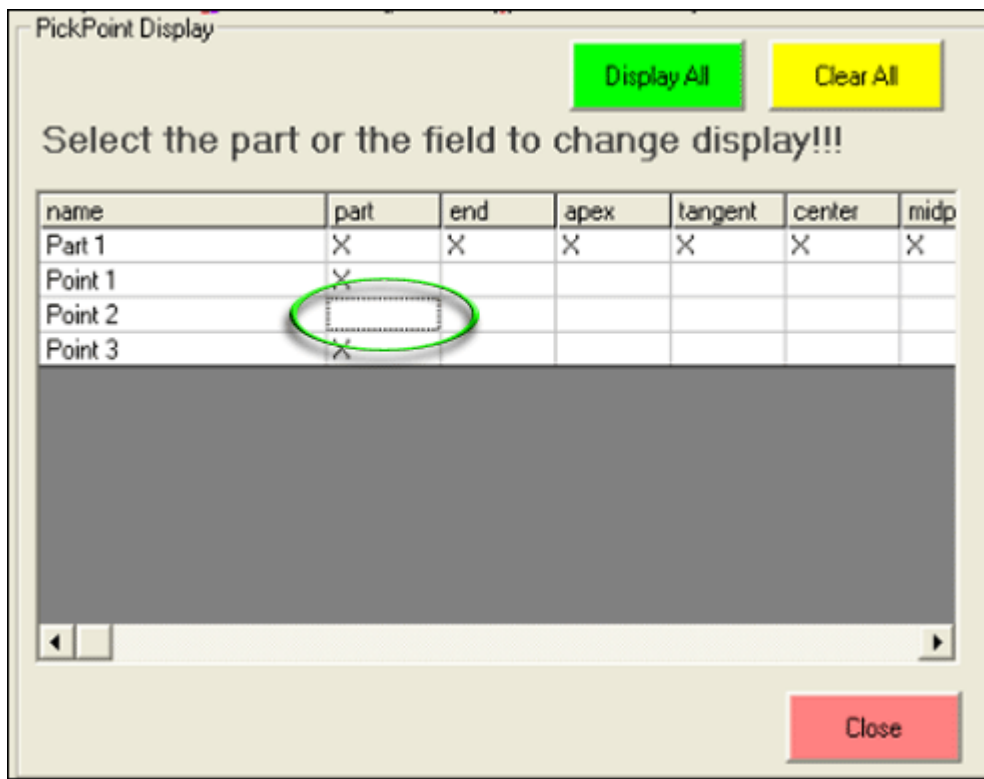


If you want to suppress all pick points and parts, simply click the "Clear All" button. Notice how all "X"s clear out, the part and pick points disappear, and the tri-star re-appears.

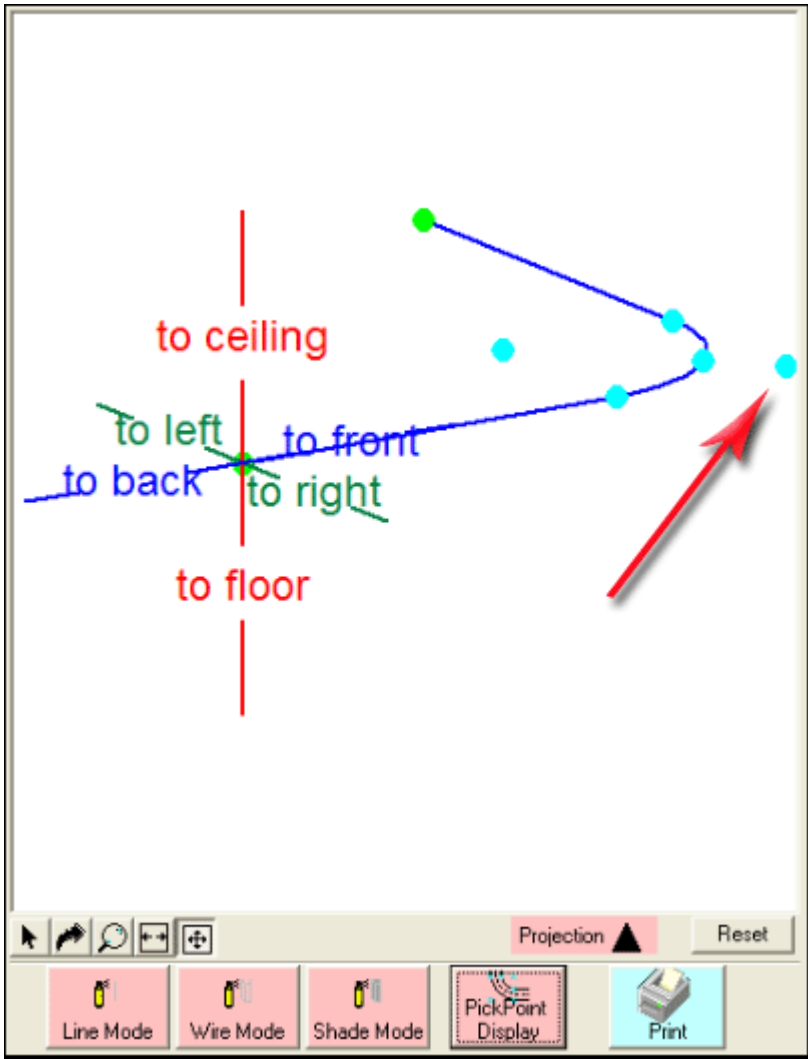


Clicking the green "**Display All**" button will place "X's" back in all the boxes and re-display the part.

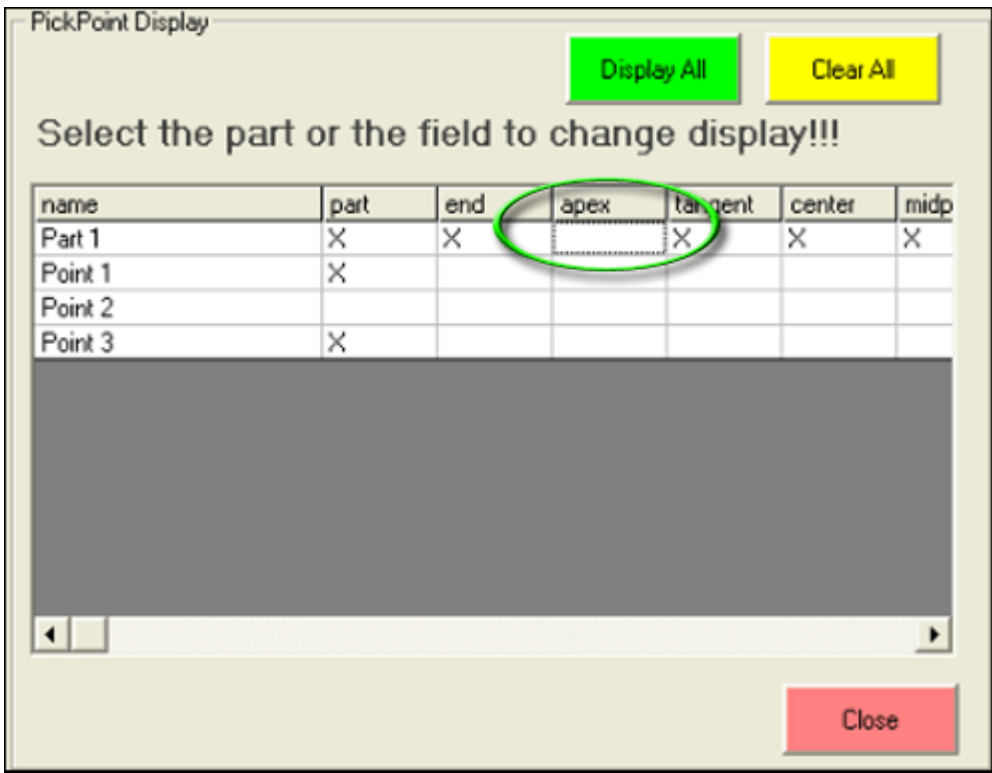
Clicking each of the "X's" individually will suppress the associated part of the image. In order to suppress the tri-star pick point and any created pick points (in our part, that means either end and the point at the apex), you will have to un-check the created pick point and the turquoise point created when the part is created. So, to suppress the apex pick point, first un-check "**Point 2**" (highlighted in green).



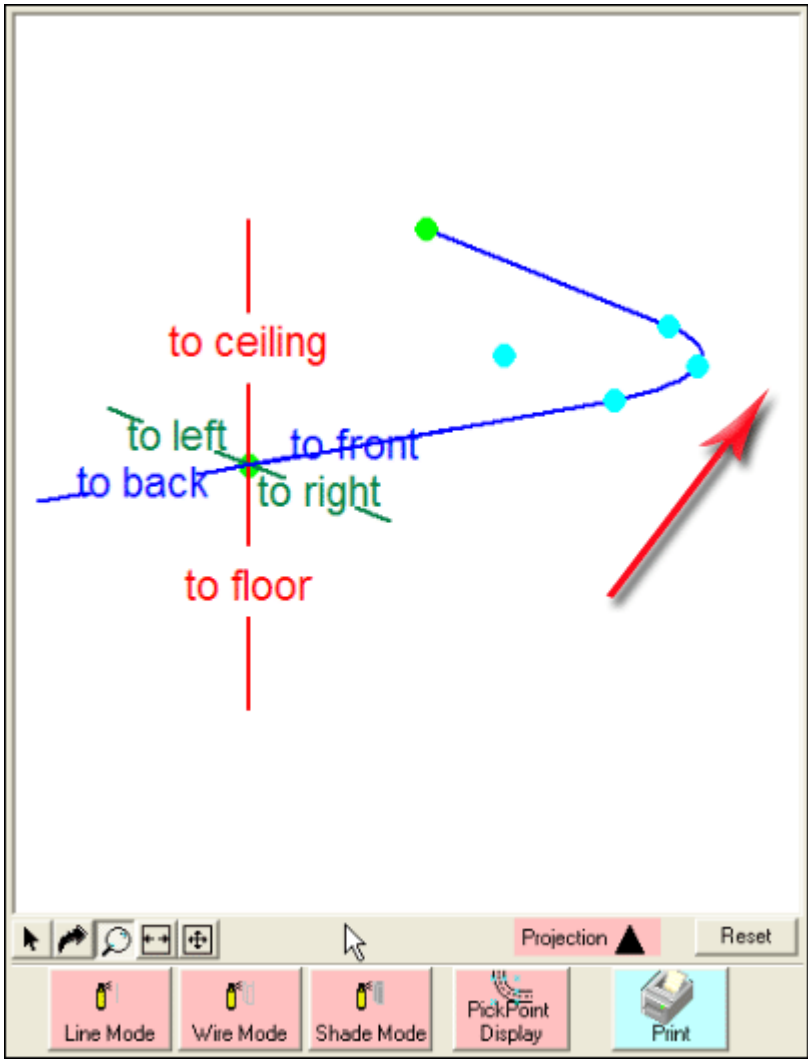
This will hide the green pick point in that location, but leave the turquoise one.



Then un-check the "X" under the "Apex" column, in the "Part 1" row.



Now both apex pick points are hidden.



All parts and pick points will show up in this window, so you can hide or show any combination of them.