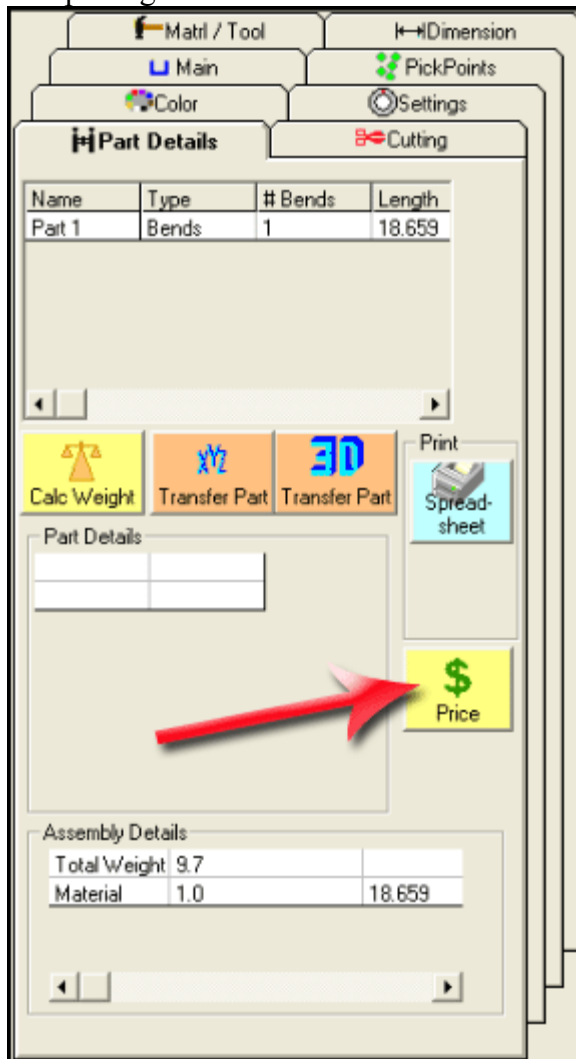


## Pricing Module

---

The pricing module is accessed from the "Part Details" tab by pressing the "Price" button.





The pricing module will default to the following view when there are no created parts. Click the "Close" button to exit the pricing module.


Price

Item	Qty	Time Per	Total Time	Cost Per	Total (1x)
Other		--	--		
Other		--	--		
Other		--	--		
				Markup Material %	0%
				Markup Material Amount	\$0.00
				Material Price	\$0.00
				Labor Sub-Total	\$0.00
				Markup Labor %	0%
				Markup Labor Amount	\$0.00
				Labor Price	\$0.00
				Total Price Per	\$0.00
				Total Price	\$0.00

Quantity 2nd field:

Quantity 3rd field:




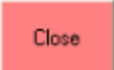
Once you create a part, the fields in the image below will show up in the pricing window. Initially there were only 3 "Other" rows, now we have Material, bend, bend setup, cut, and cut setup.

Item	Qty	Time Per	Total Time	Cost Per	Total (1x)
Mat: 1.0	18.66	N/A	N/A	\$0.00	\$0.00
Bend: 3.0	1	0	0	\$0.00	\$0.00
Bend Setup: 3.0	1	0	0	\$0.00	\$0.00
Cut: 1.0	1	0	0	\$0.00	\$0.00
Cut Setup: 1.0	1	0	0	\$0.00	\$0.00
Other		--	--		
Other		--	--		
Other		--	--		
				Markup Material %	0%
				Markup Material Amount	\$0.00
				Material Price	\$0.00
				Labor Sub-Total	\$0.00
				Markup Labor %	0%
				Markup Labor Amount	\$0.00
				Labor Price	\$0.00
				Total Price Per	\$0.00
				Total Price	\$0.00

Quantity 2nd field:

Quantity 3rd field:

Each of the values under the "Qty", "Time Per", "Total Time", and "Cost Per" columns in these new rows can be edited. Notice in the following image we have set the "Cost Per" value to ".30" for our material and all fields affected by this change have updated automatically.

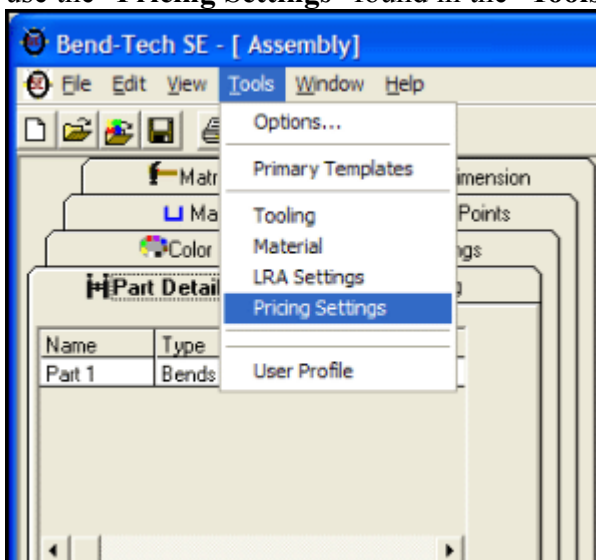
Item	Qty	Time Per	Total Time	Cost Per	Total (1x)
Mat: 1.0	18.66	N/A	N/A	.30	\$5.60
Bend: 3.0	1	0	0	\$6.00	\$0.00
Bend Setup: 3.0	1	0	0	\$0.00	\$0.00
Cut: 1.0	1	0	0	\$0.00	\$0.00
Cut Setup: 1.0	1	0	0	\$0.00	\$0.00
Other		--	--		
Other		--	--		
Other		--	--		
Markup Material %					0%
Markup Material Amount					\$0.00
Material Price					\$5.60
Labor Sub-Total					\$0.00
Markup Labor %					0%
Markup Labor Amount					\$0.00
Labor Price					\$0.00
Total Price Per					\$5.60
Total Price					\$5.60

Quantity 2nd field:

Quantity 3rd field:

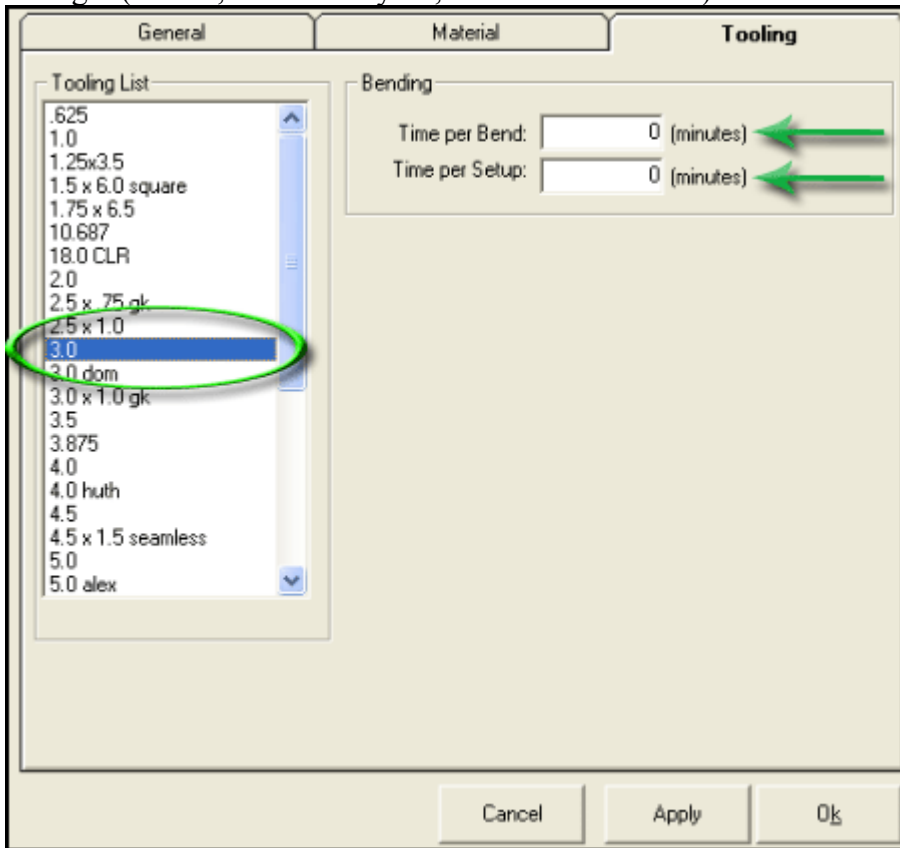
Print Close

You can set all your values in the pricing window on the fly (although if you do it this way, once you close the pricing window, the values you entered will clear out), or you can set some defaults. To do so, use the "**Pricing Settings**" found in the "**Tools**" menu.



There are three tabs in the pricing settings window: "**General**", "**Material**", and "**Tooling**". While

viewing the tooling tab, choosing your tooling on the left side will display the current settings for it on the right (for 3.0, it's currently 0's, which is the default).



These values ("**Time Per Bend**" and "**Time Per Setup**") will be multiplied by your hourly rate and display in the pricing window. Enter your setup and bend time in minutes and click "**Apply**" to save those values to that particular tooling.

The "Material" tab is set up the same way, but has more options you can edit. This is also where you can set a price for each material type you have in your library.

General	Material	Tooling
Material List .25 .5 .75 .75 gk <b>1.0</b> 1.0 gk 1.25 1.5 1.5 crs 1.5 square CRS 1.626 x .083 1.66 1.75 1020 DOM x .095 1.75 1020 DOM x .120 1.75 DOM 2.0 2.0 Square 2.0 x .120 DOM 2.375 2.5 phantam	Material Cost Cost Per Unit: <input type="text" value="0"/>  Cutting (Straight Cut; ie...cold saw) Time per Cut: <input type="text" value="0"/> (minutes) Time per Setup: <input type="text" value="0"/> (minutes)  Fishmouthing or Notching Time per Cut: <input type="text" value="0"/> (minutes) Time per Setup: <input type="text" value="0"/> (minutes)  Welding Time per Node: <input type="text" value="0"/> (minutes) Time per Setup: <input type="text" value="0"/> (minutes)	
<input type="button" value="Cancel"/> <input type="button" value="Apply"/> <input type="button" value="Ok"/>		

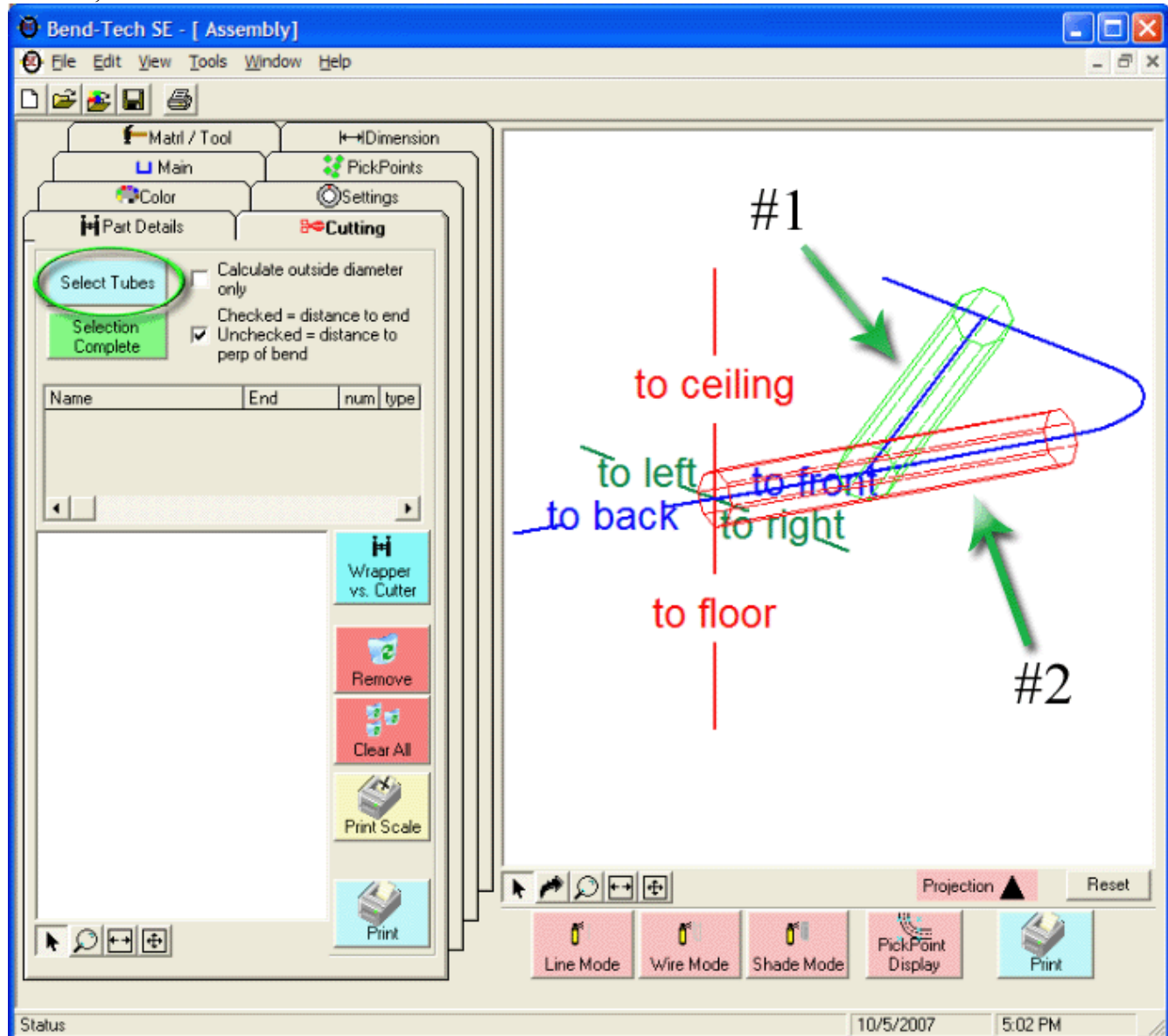
Lastly, the "General" tab allows you to set your hourly rate and set a markup for your parts and/or labor (by percentage).

General	Material	Tooling
Rate per hour (ie: 25.00) <input type="text" value="0"/> Markup Labor Percentage (10 = 10%) <input type="text" value="0"/> Markup Material Percentage (10 = 10%) <input type="text" value="0"/>		
<input type="button" value="Cancel"/> <input type="button" value="Apply"/> <input type="button" value="Ok"/>		

**Note: Be sure to click the "Apply" button any time you change these settings or they will not be saved! Also, you will need to exit and re-enter the software in order for the defaults to take effect.**

You may have noticed the "Fishmouthing or Notching" and "Welding" settings in the "Material" tab. In order for these to show up in the pricing window, you'll have to either enter them manually or...

Select two tubes in the "Cutting" tab by clicking the "Select Tubes" button and picking the tube to be cut first, then the tube it will be welded to.



Once you click the "Selection Complete" button, the pricing grid will update with the "Notch", "Notch Setup", "Weld", "Weld Setup" rows, and will increment the quantity of each.

Item	Qty
Mat: 1.0	28.56
Bend: 3.0	1
Bend Setup: 3.0	1
Cut: 1.0	2
Cut Setup: 1.0	1
Notch: 1.0	1
Notch Setup: 1.0	1
Weld: 1.0	1
Weld Setup: 1.0	1
Other	
Other	
Other	