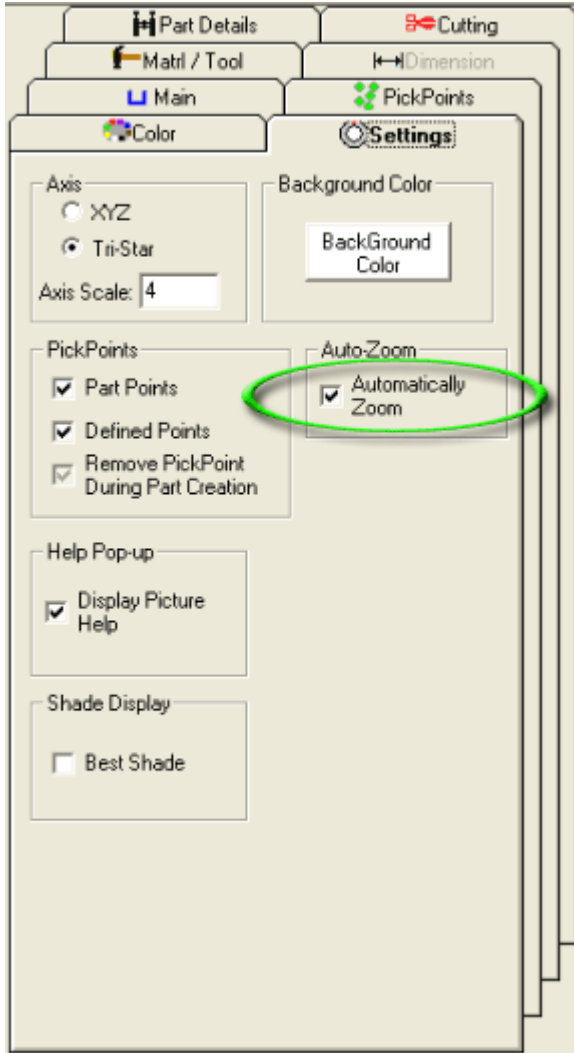


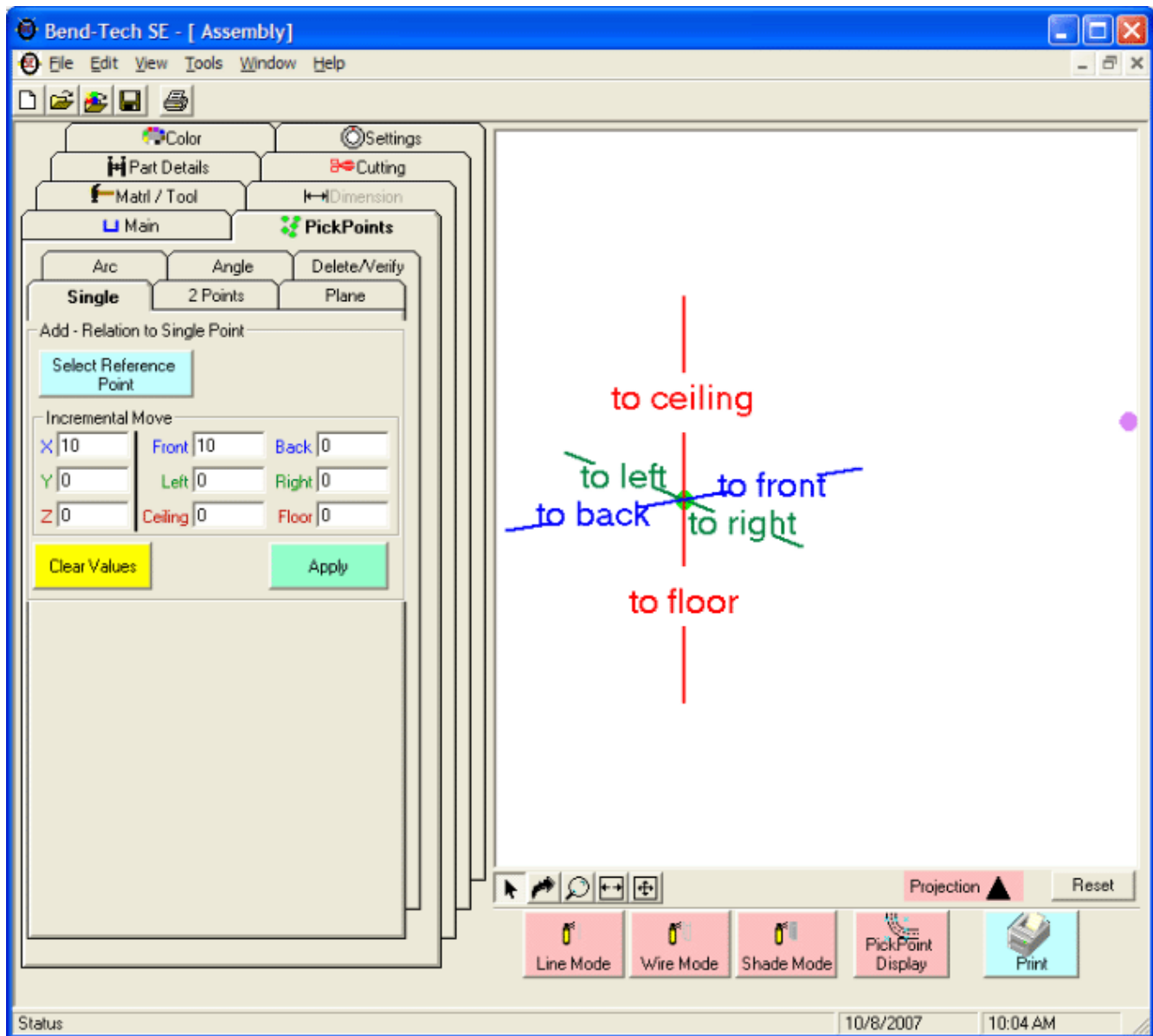
## Auto-zoom Check Box

---

The assembly interface, by default, refreshes the drawing on the right side as you pick new pick points. We have added a simple check box if you decide you don't want the drawing to update itself. It is located on the "Settings" tab, and is called "Automatically Zoom".



As an example, say I want to create a pick point 10 inches to the "front" of the center of the tri-star (or +10 on the "X" axis). With the check box checked, the picture changes to the following.



Notice how the drawing has scaled so that the pick point fits within it.

However, if we un-check the "**Automatically Zoom**" check box, the picture will not scale and you will not be able to see your pick point until you either click the "**Autoscale**" or "**Reset**" buttons or until you rotate the view or zoom out.

