

# Loading a Part into Assembly

This section covers how to load a part that was made as a "template", "custom part", "custom 3d part", "XYZ" or a "sketch" part into the assembly Master Part List.

**NOTE: It is recommended parts are created in assembly because of the potential difficulty in rotating a part into the proper orientation!!!**

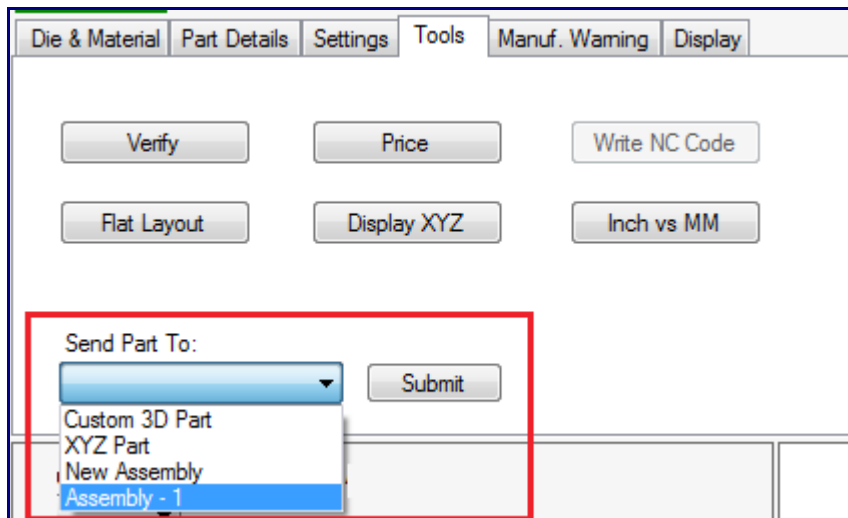
There are 2 methods to accomplish this:

Method 1) **From the part interface**

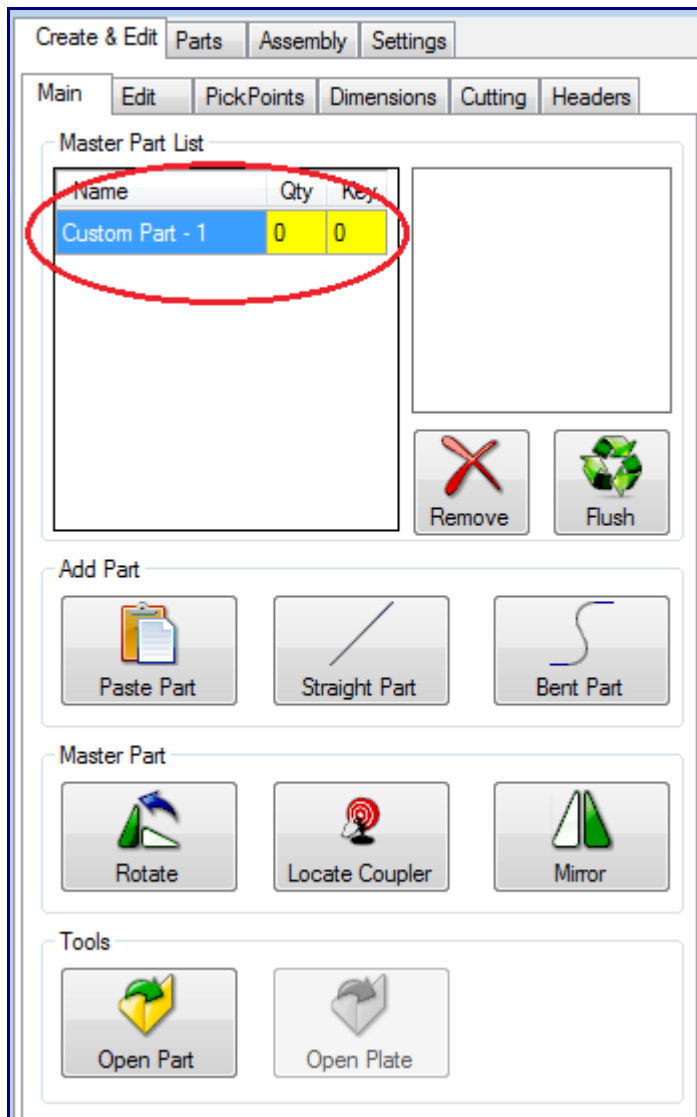
Method 2) **From a saved part file**

## Method 1) From the Part Interface

Once the part is complete select the "**Tools**" tab and then select the "**Send Part To**" drop down menu. Choose either "New Assembly" or any open Assembly projects listed here. Click "**Submit**".

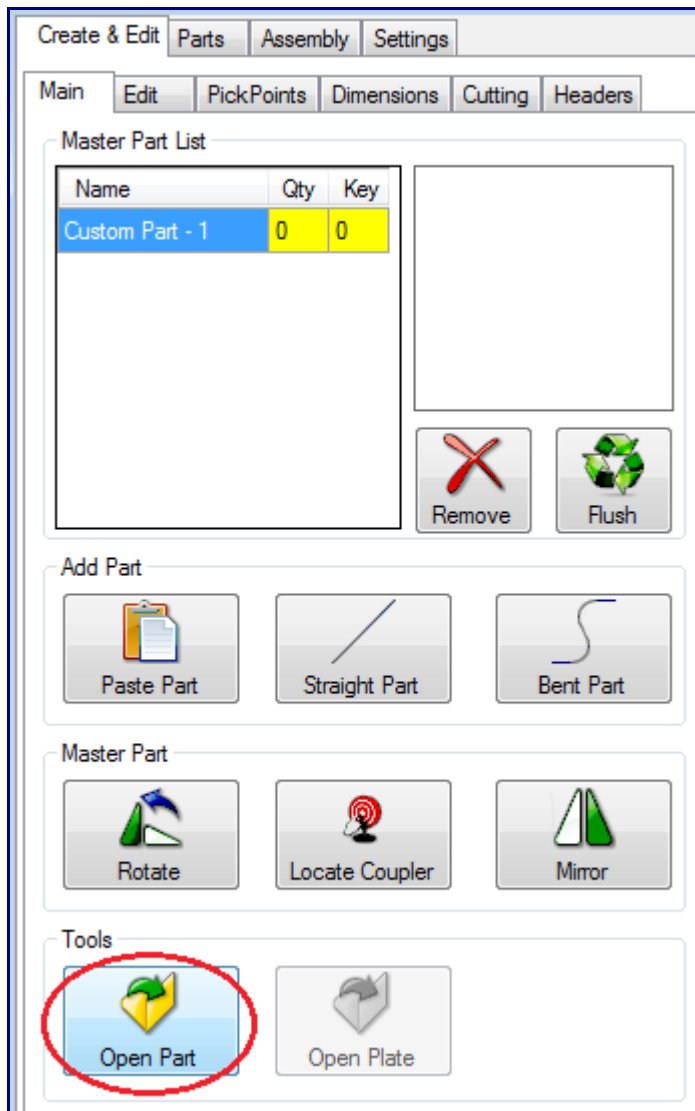


Bend-Tech will automatically bring the part into the Assembly chosen. You will now find your part in the "**Master Part List**".

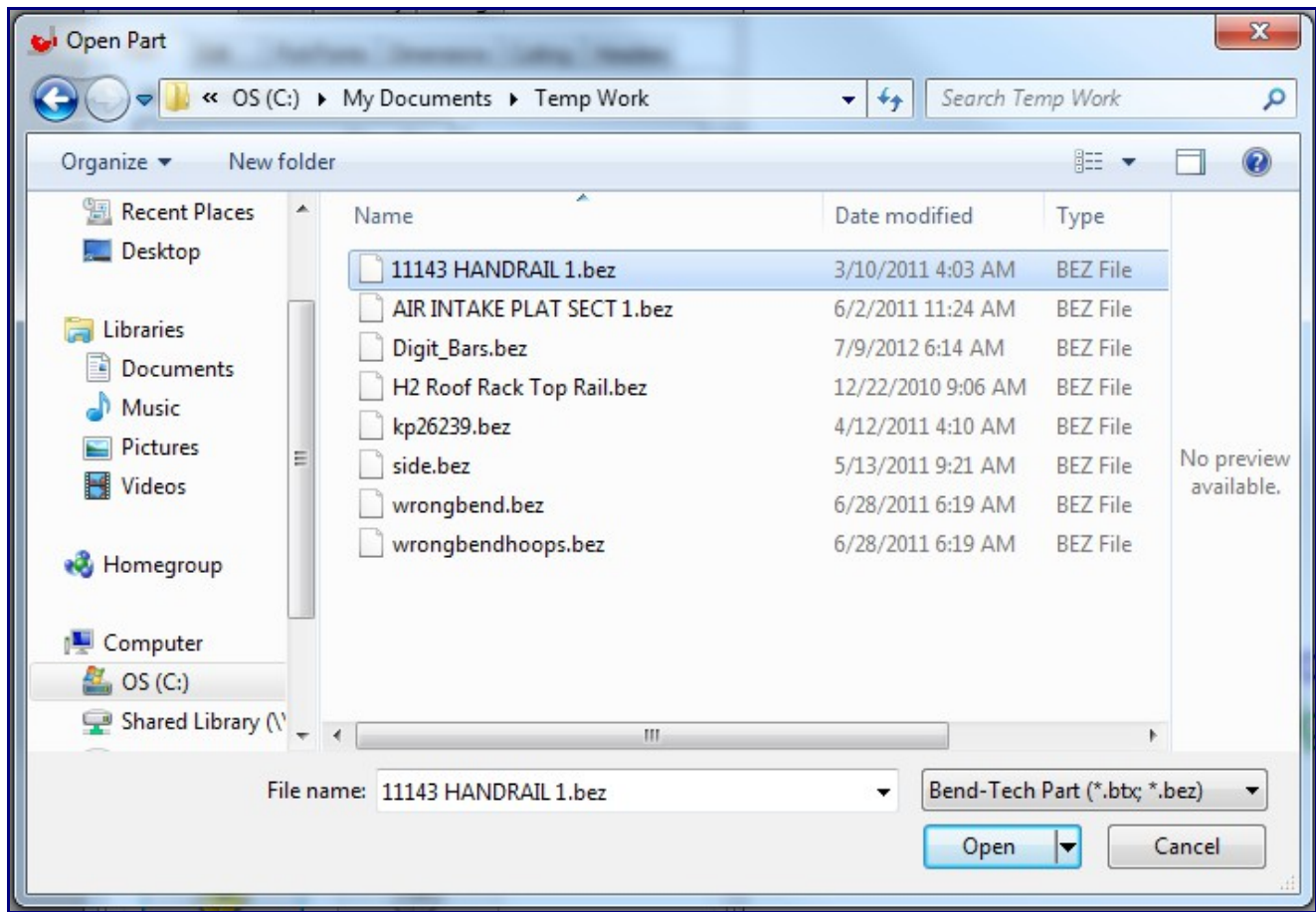


## Method 2) From a Saved Part File:

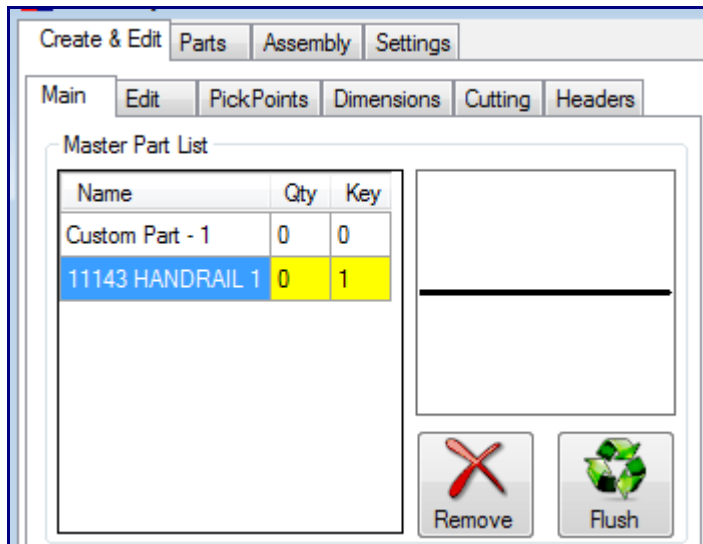
Select the "Open Part" command button under the "Main" tab in the assembly interface:



Select the part from the list:



You will see the part in the Master Part List.



Add it to your assembly by using the "**Paste Part**" command button.