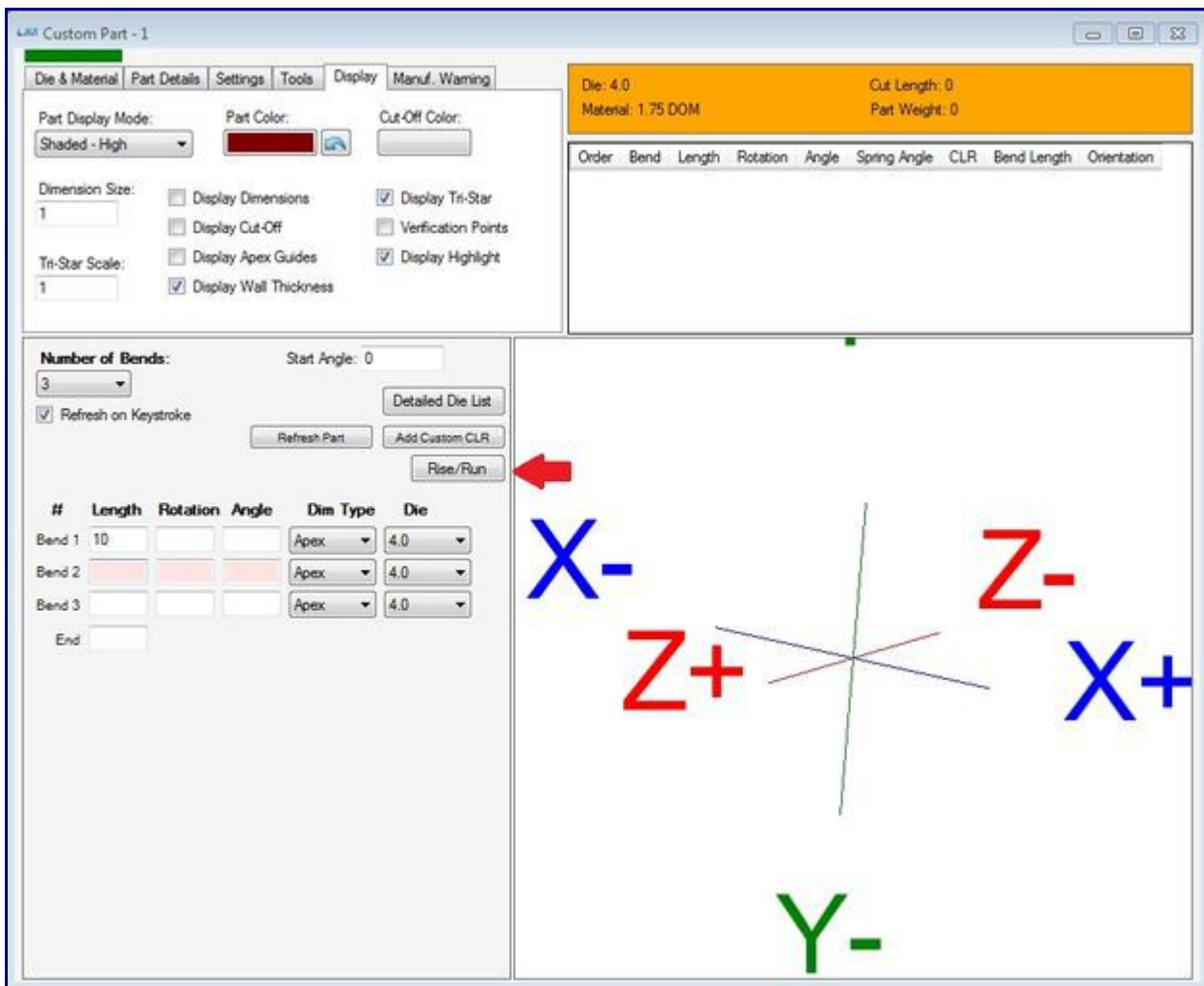


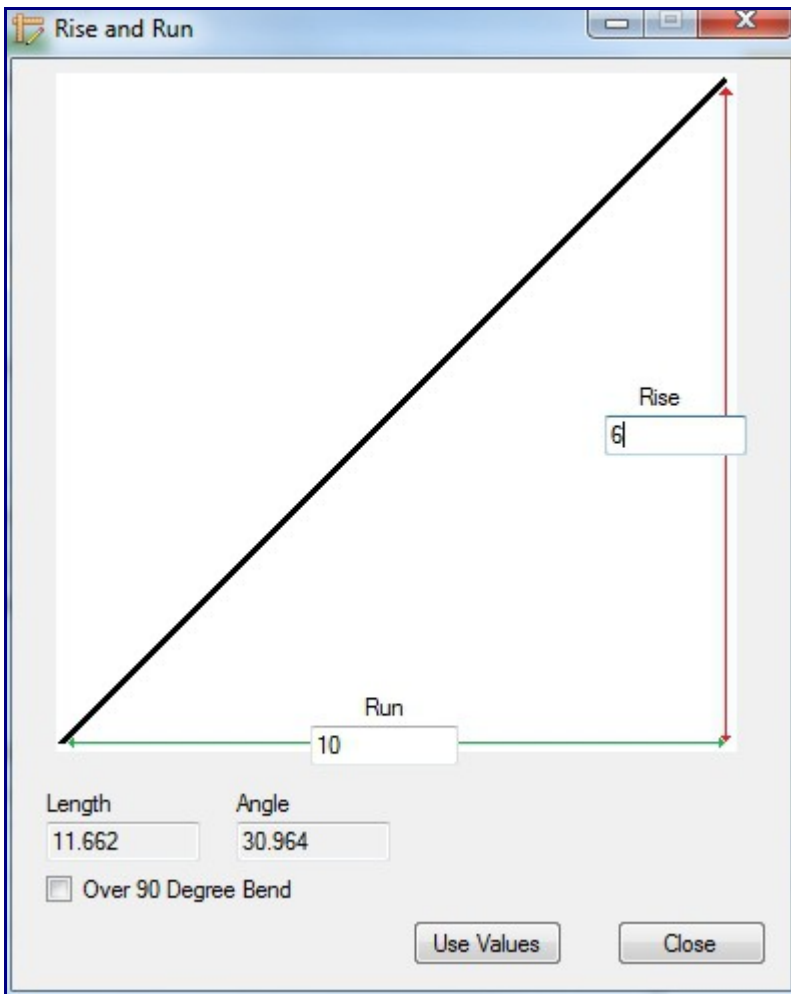
New Rise & Run Feature

Custom Part has added a new feature that will calculate your length and angles and all you have to do is input your Rise/Run for the bend that you have selected. Rise/Run is a great feature when say you are making a railing and you know how far up and how far out you want to go, but you don't know the angle, this feature will help you take out the guess work for making your parts.

We are going to make a part and use the Rise/Run feature. First things first, let's add a material and die to our part and then add the first length of our part up to the first bend. Then select the length of the second bend and push the Rise/Run button.



You will see the Rise and Run inputs and underneath those you will see your length and angle will be calculated out to you based on the values of your inputs. You can check the over 90 Degree Bend box and it will bump up your angle to be over 90 degrees but still is calculated out to have the correct Rise & Run. Hit the Use Value button from inside the Rise/Run feature and your lengths and angles will be added to your Custom Part.



Rise and Run

Run
10

Rise
6

Length
11.662

Angle
149.036

Over 90 Degree Bend

Use Values

Close