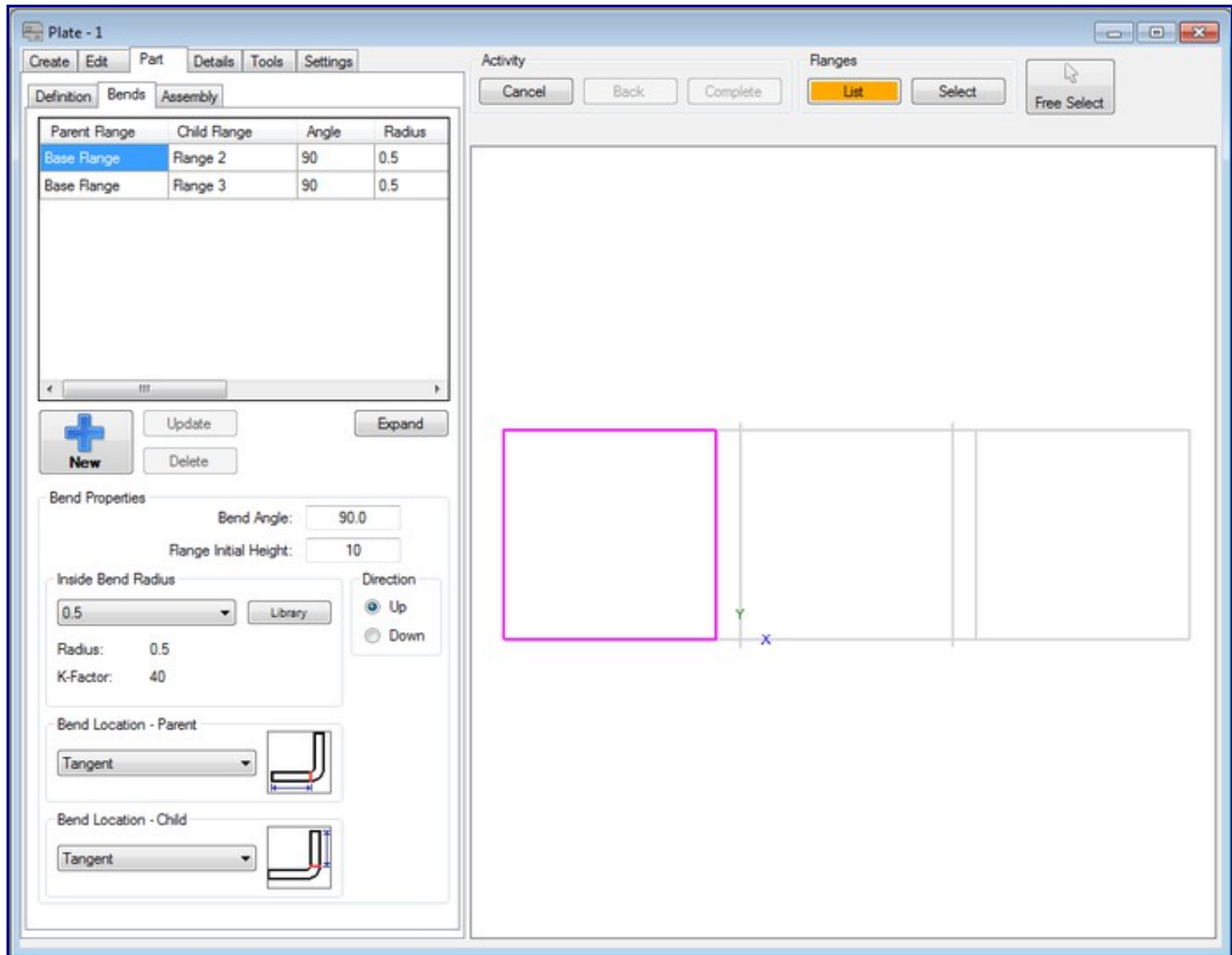
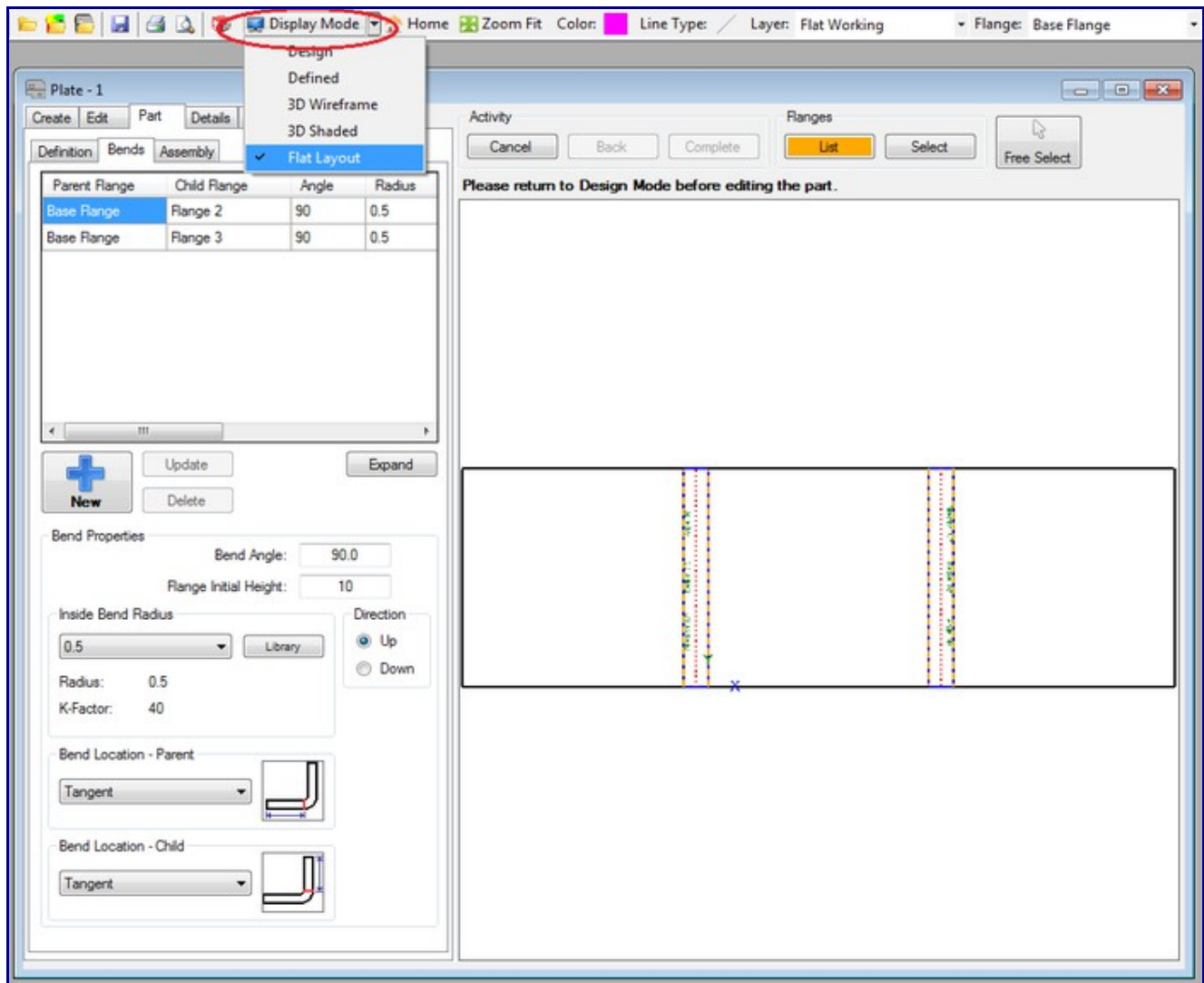


Creating a Flat DXF File From a Bent Part

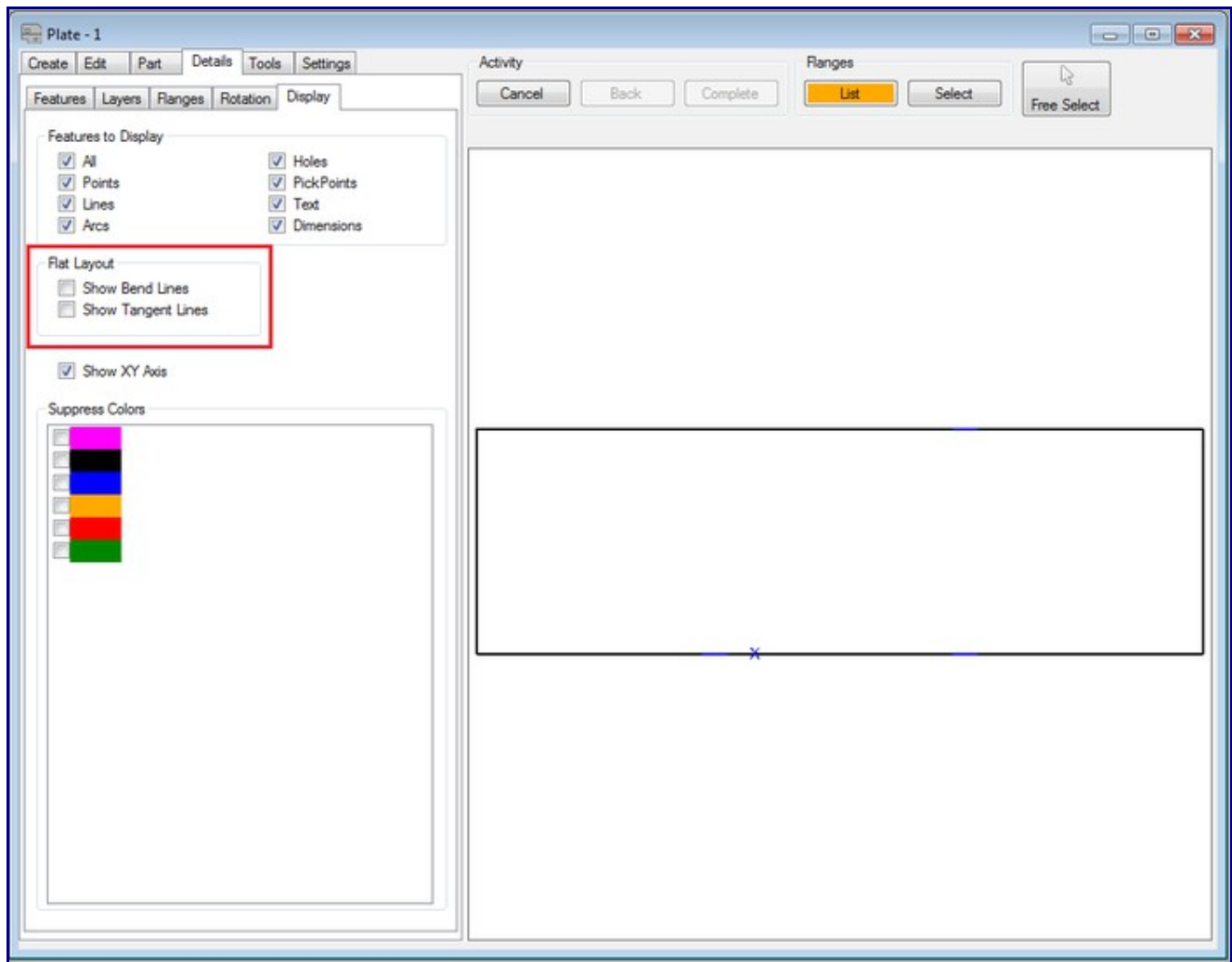
Create your part:



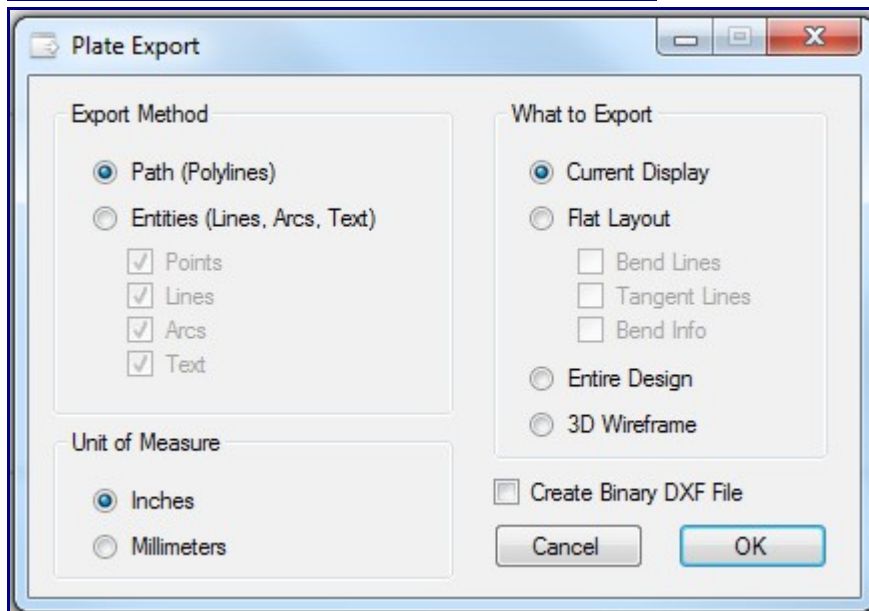
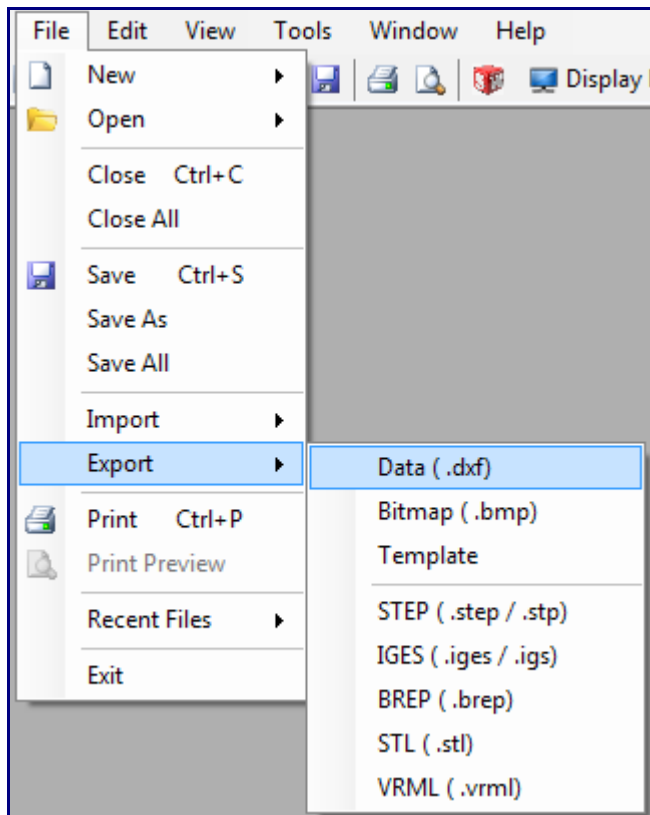
After creating your part select the "**Display Mode**" drop down at the top of the screen and change it to "**Flat Layout**".



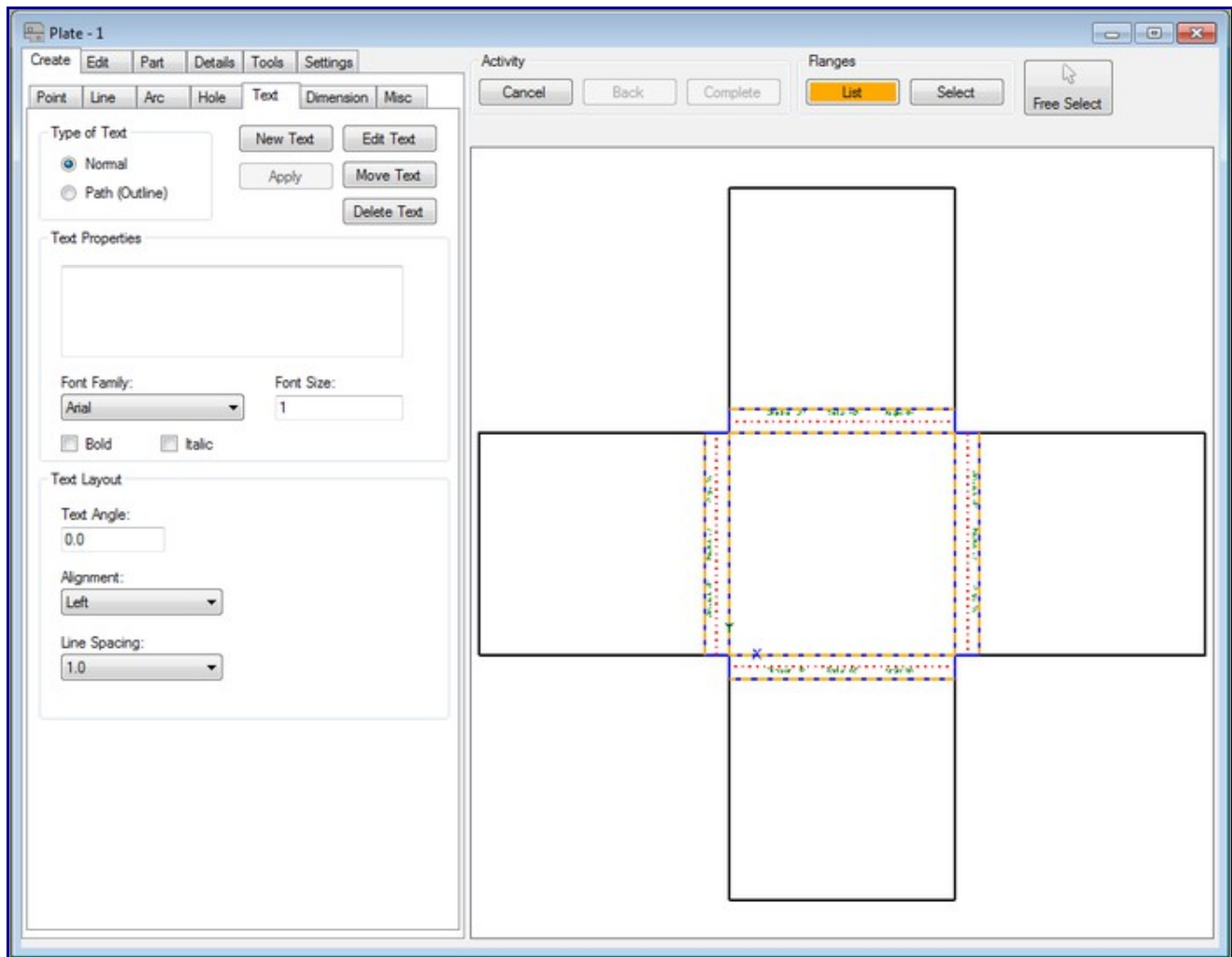
Select the **"Details"** tab. Select the **"Display"** sub-tab. Uncheck the Flat Layout features; **"Show Bend Lines"** and **"Show Tangent Lines"**.



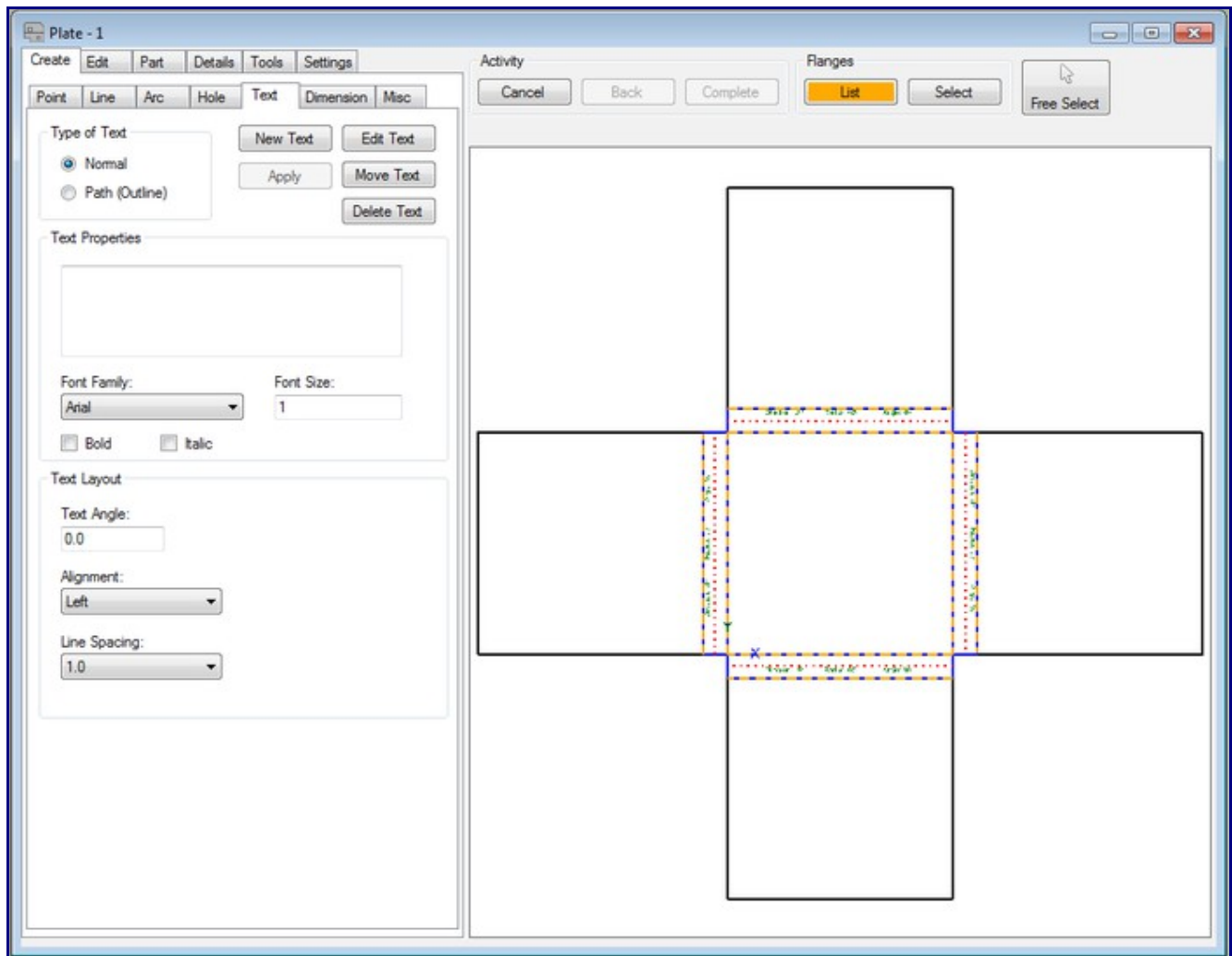
Select "**File**", "**Export**", "**DXF**". Give it a name and choose which options you want in the Plate Export Options window.



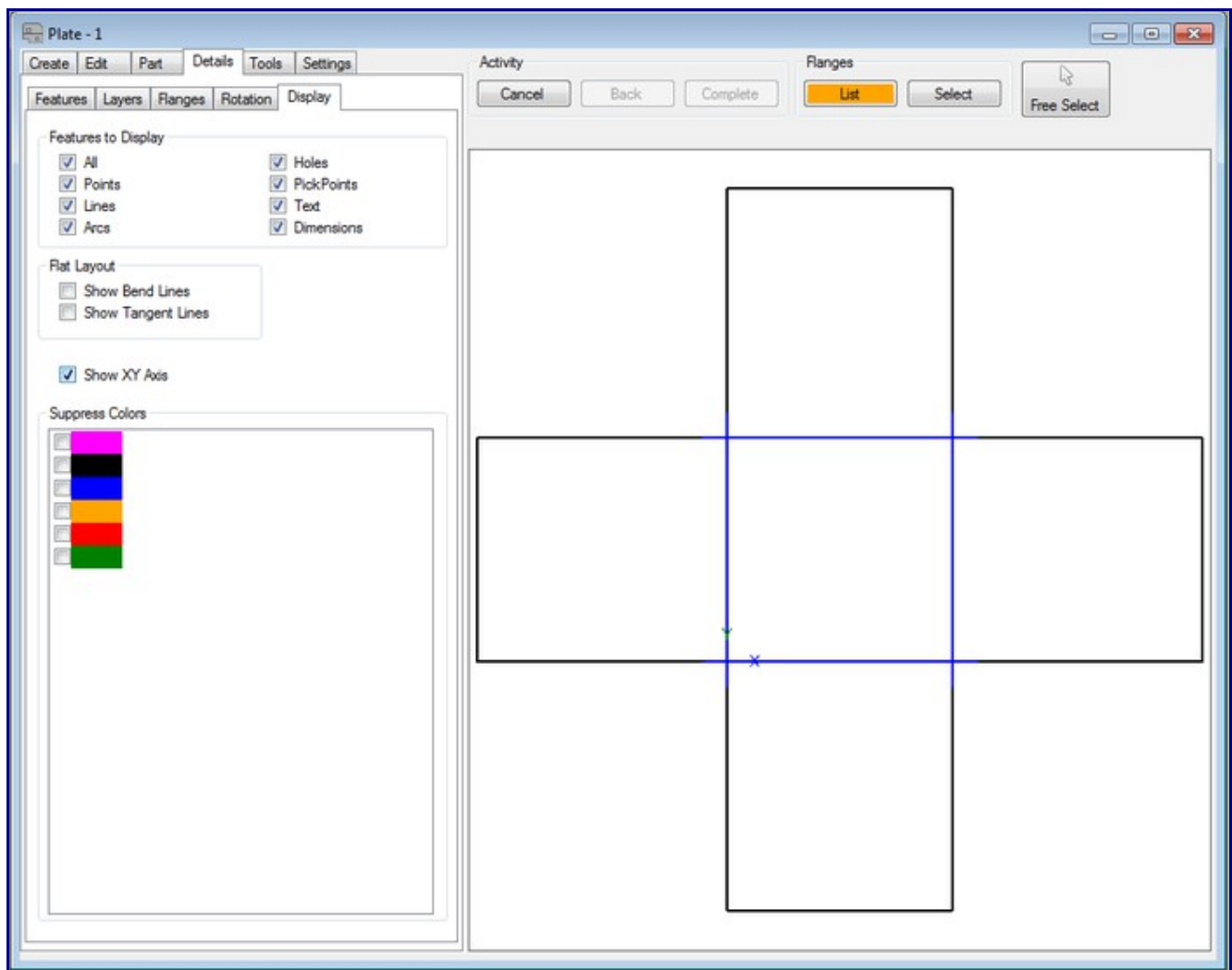
In some cases bend lines may be left over. Use the same procedure as above and trim/break/delete the extra lines from the "Flat" model.



In some cases bend lines maybe left over. Use the same procedure as above and trim/break/delete the extra lines from the "Flat" model.



Notice there are extra lines.



Trim/break/delete the extra lines.

