

Template

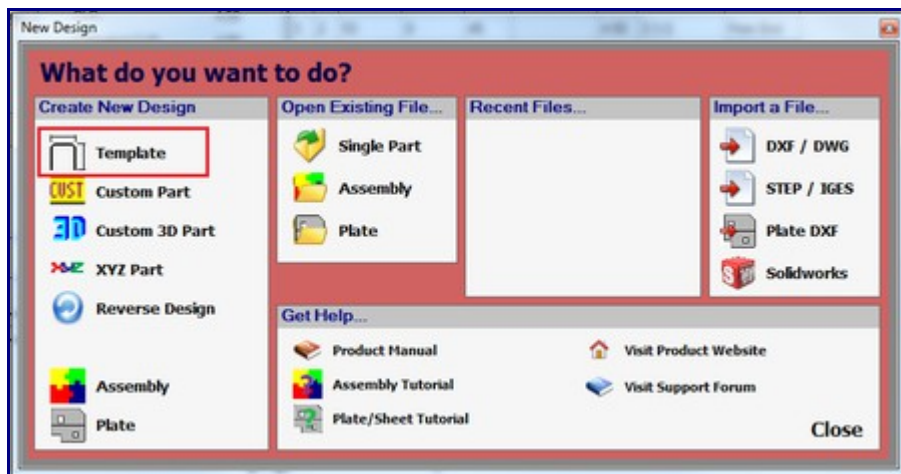
Current item: **Template**

Description

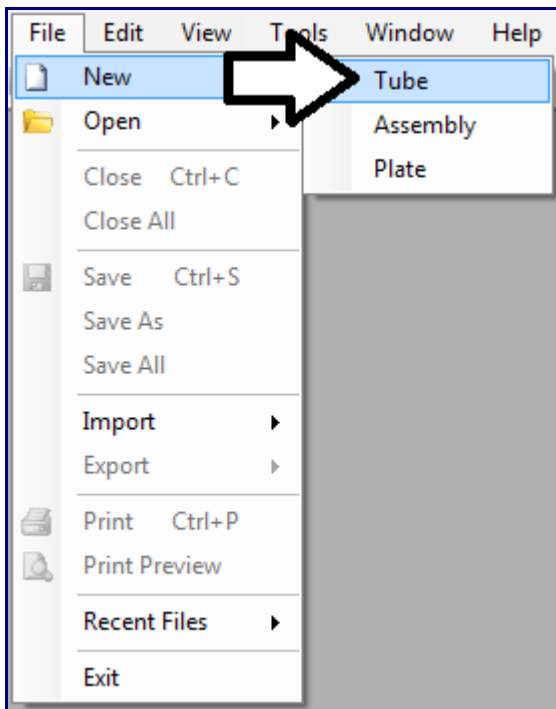
There are about 150 pre-loaded templates available in the software. Parts can be created using these templates and adding custom values for the part measurements.

How-To

Selection



To use a template, select the 'Template' option in the New Design menu that shows up when Bend Tech starts up. This same menu will also display when 'Tube' is chosen in the 'File' menu under 'New'.

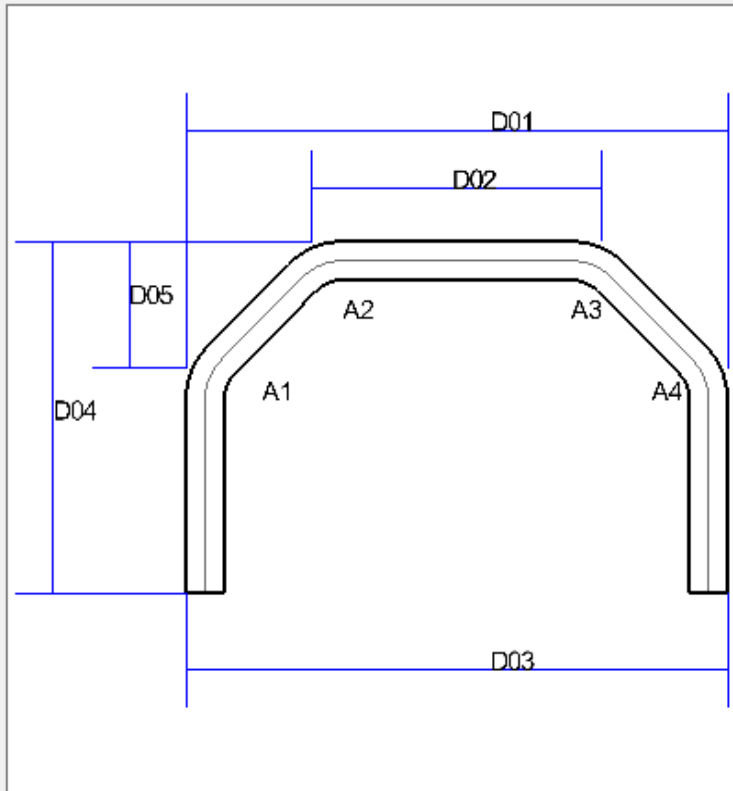


Once 'Template' has been clicked, the New Part-Template menu will be displayed. On the right side of the window a list of all templates will be shown. If any primary templates have been set, they can be accessed directly at the top of the list. Primary templates can be set by clicking 'Primary Templates' under the 'Tools' menu at the top of the window. The preview frame will be to the left. Click the [+] icons to expand each template section to view each option available in that specific section. To show a visual preview of a template, place the cursor over the template title. Click the 'Collapse All' or 'Expand All' button to close or open the entire list. To choose a template, select it by clicking directly on the name of the template and click the 'Submit' button at the bottom of the menu window. To exit the menu without selecting a template, click the 'Cancel' button.

New Part - Template

Select Template

- ☐ Single 1 (Center Dims)
- ☐ Single Bevel Hoop (Inside Dims)
- ☒ Hoops
 - ☐ Simple Hoop
 - ☐ Simple Hoop (Center Dims)
 - ☐ Simple Hoop (Outside Dims)
 - ☐ Simple Hoop (Inside Dims)
 - ☐ Single Bevel Hoop
 - ☐ Single Bevel Hoop (Center Dims)
 - ☐ Single Bevel Hoop (Outside Dims)
 - ☐ Single Bevel Hoop (Inside Dims)
 - ☒ Double Bevel Hoop
 - ☐ Double Bevel Hoop (Center Dims)
 - ☒ Double Bevel Hoop (Outside Dims)
 - ☐ Double Bevel Hoop (Inside Dims)
 - ☐ Double Bevel Hoop 2
- ☐ Door Bars
- ☐ Offsets
- ☐ Single Bends
- ☐ U Shaped Parts
- ☐ 180 Degree
- ☐ Hat Shape
- ☐ Chamfer
- ☐ 3 Bends
- ☐ 4 Bends
- ☐ Railings



Expand All

Collapse All

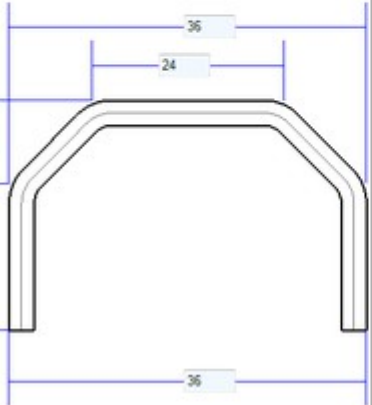
Cancel

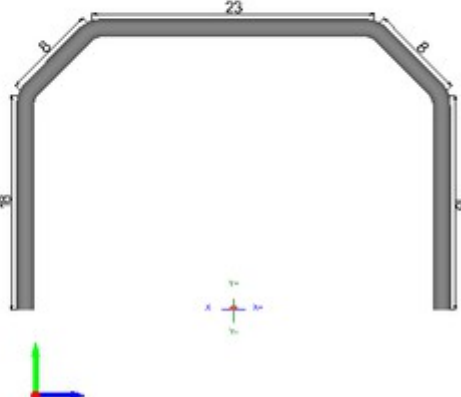
Select

Design

Die & Material		Part Details		Settings		Tools		Manuf. Warning		Display	
Select Material: <div style="display: flex; align-items: center;"> <div style="border: 1px solid gray; padding: 2px 5px; margin-right: 5px;">1.5 Round</div> <div style="border: 1px solid gray; padding: 2px 5px; margin-left: 5px;">Library</div> </div>		Diameter: 1.50 Wall Thickness: 0.12 Weight: 0.50									
Select Die: <div style="display: flex; align-items: center;"> <div style="border: 1px solid gray; padding: 2px 5px; margin-right: 5px;">2.0</div> <div style="border: 1px solid gray; padding: 2px 5px; margin-left: 5px;">Library</div> </div>		CLR: 2.00 Calibrated CLR: 2.24 Bend Location Offset: 0.00									
<div style="display: flex; gap: 10px;"> <div style="border: 1px solid gray; padding: 2px 10px;">Custom CLR</div> <div style="border: 1px solid gray; padding: 2px 10px;">Detailed List</div> </div>											
<input checked="" type="checkbox"/> Display Spring Angle											

Double Bevel Hoop (Outside Dims)





Once the desired template has been properly selected, the template will be opened in the part design interface.

If a default die and material have not been set, a die and material must be chosen before designing the part. If necessary, choose a material and die in the Die and Material tab. Once they have been chosen, below the tabbed section there will be a 2D display of the chosen part. The name of the template will be shown above this section. Each dimension requires a value to be entered into its appropriate measurement field. To add a value to a dimension, enter a numerical value into the field on the blue dimension line. The values that are entered here will be applied to the 3D part display to the right.

