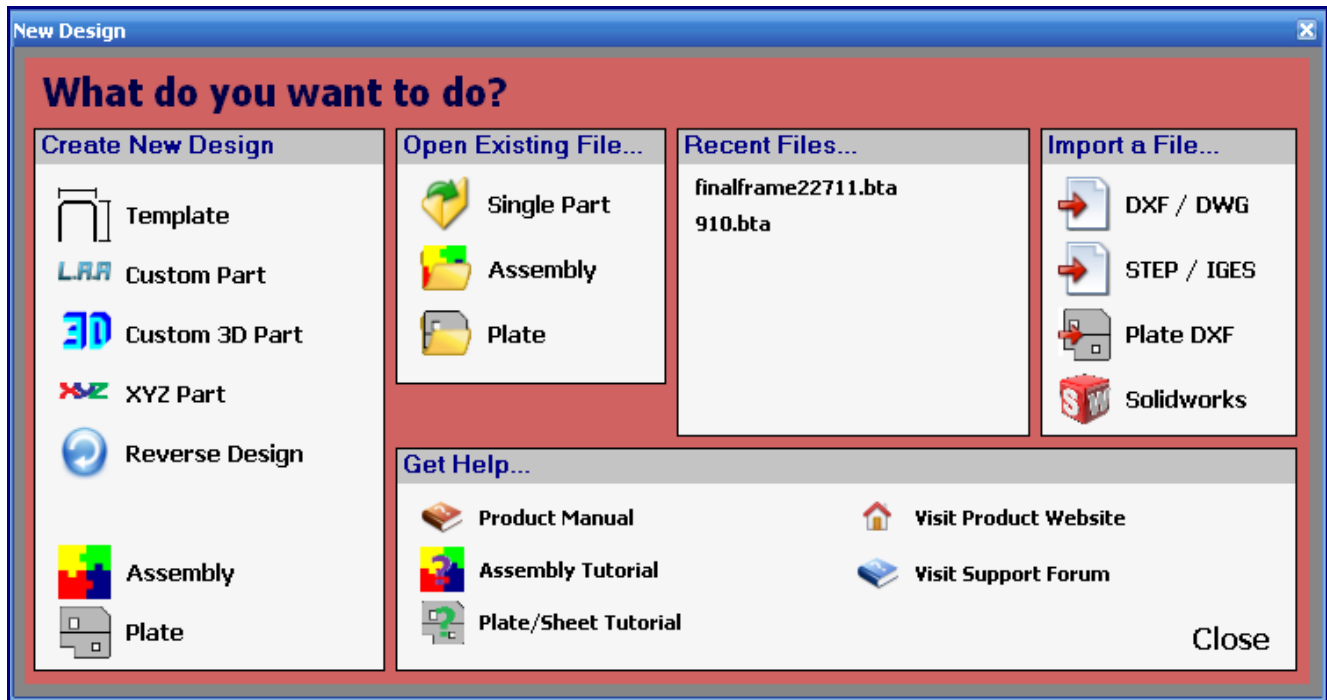


# Cutting Tutorial

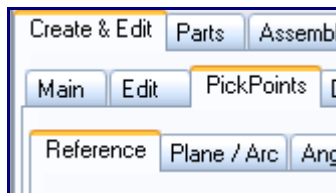
In this tutorial you will learn how to add cuts to tubes in an assembly project.

Start by launching the program and opening a new assembly by clicking on the Assembly button, located just above the Plate button on the bottom left corner of the New Design window.



Before we start, we need to put a few parts together so that we have something to cut.

Go to the PickPoints tab.



Click the Set Reference button and click the point at the center of the Tri-Star (this should be the only point on the screen right now). If you successfully select the point, it will turn red. Enter 24 in the Right field. Click the Apply button.

**Single Point**

Set Reference  Make new point Reference

X: 0 Front: 0 Back: 0

Y: -24 Left: 0 Right: 24

Z: 0 Ceiling: 0 Floor: 0

Clear Values Apply

Click the Clear Values button. Enter 12 in the right field and click Apply.

Reference Plane / Arc Angle Display Move / Delete

**Single Point**

Set Reference  Make new point Reference

X: 0 Front: 0 Back: 0

Y: -12 Left: 0 Right: 12

Z: 0 Ceiling: 0 Floor: 0

Clear Values Apply

Leave 12 in the right field and enter 8 in the Front field. Click the Apply button.

**Single Point**

Set Reference  Make new point Reference

X: 8 Front: 8 Back: 0

Y: -12 Left: 0 Right: 12

Z: 0 Ceiling: 0 Floor: 0

Clear Values Apply

Delete the value in the front field and enter 12. Click the Apply button.

**Single Point**

Set Reference  Make new point Reference

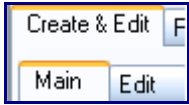
X: 12 Front: 12 Back: 0

Y: -12 Left: 0 Right: 12

Z: 0 Ceiling: 0 Floor: 0

Clear Values Apply

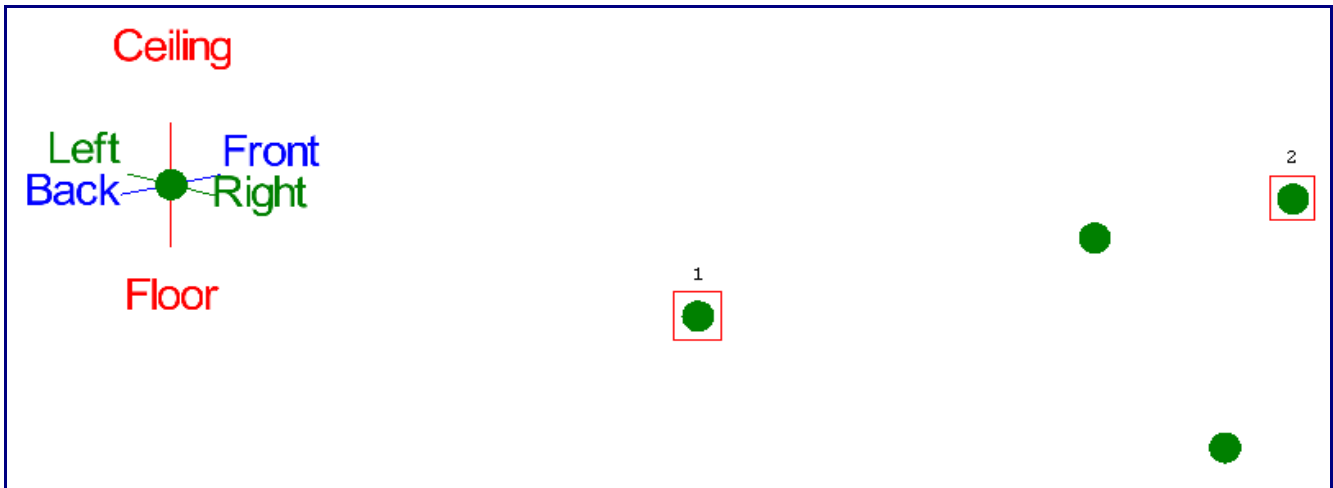
Go to the Main tab.



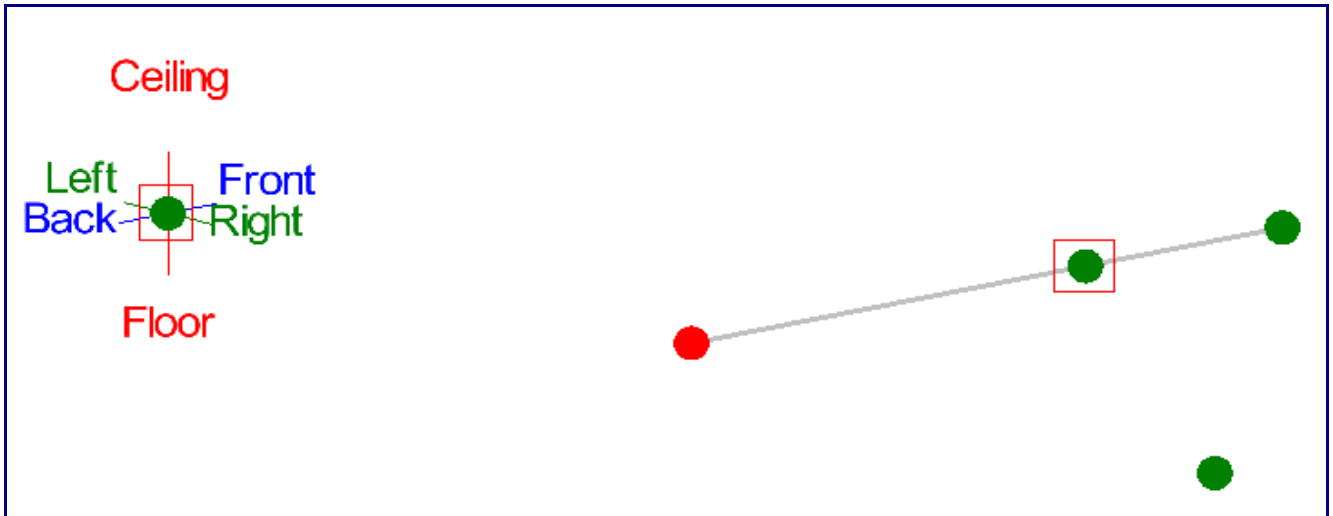
Select a die and material in the Die and Material area. If you don't have a die or material you will need to make one. Refer to the users manual for information on creating dies and materials.



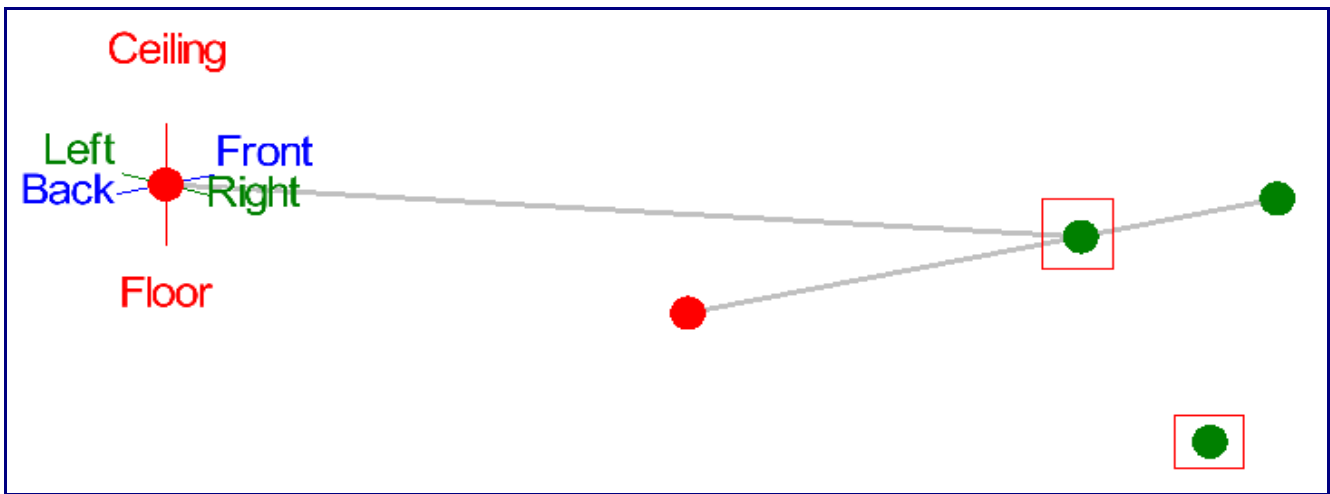
Click the Straight Part button. Click the two points that are indicated in the picture below.



Click the two points that are indicated in the picture below.



Click the two points that are indicated in the picture below.

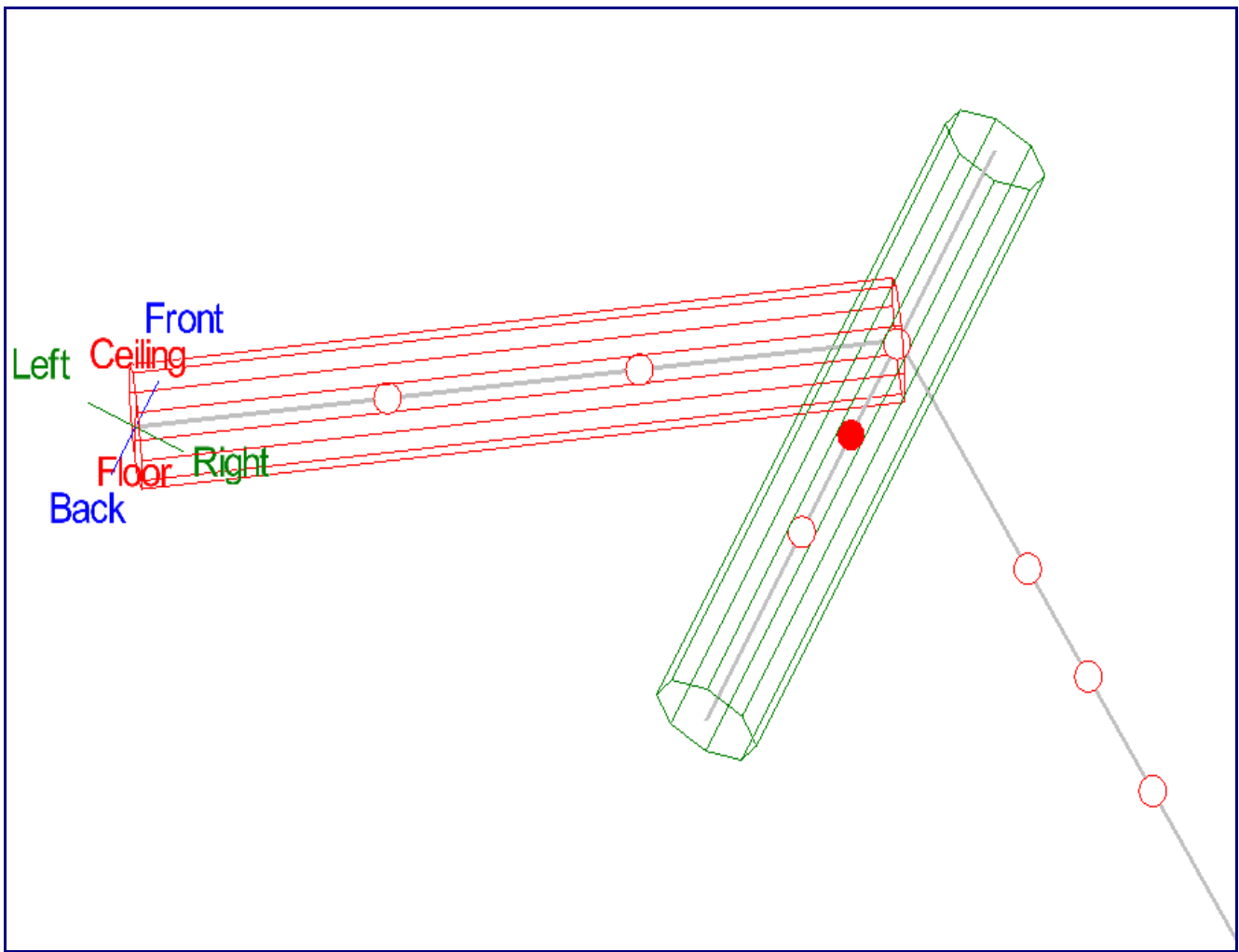


You are now finished building the part.

Go to the Cutting tab.



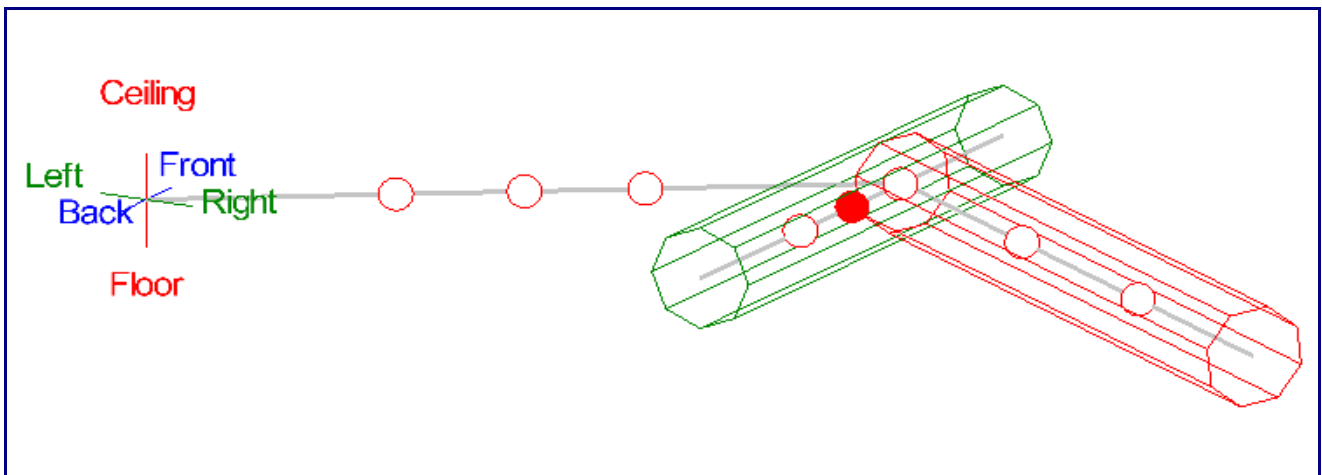
Click the New Cut button. Click on the Left tube, followed by the middle tube.



Click the Cut Complete button.



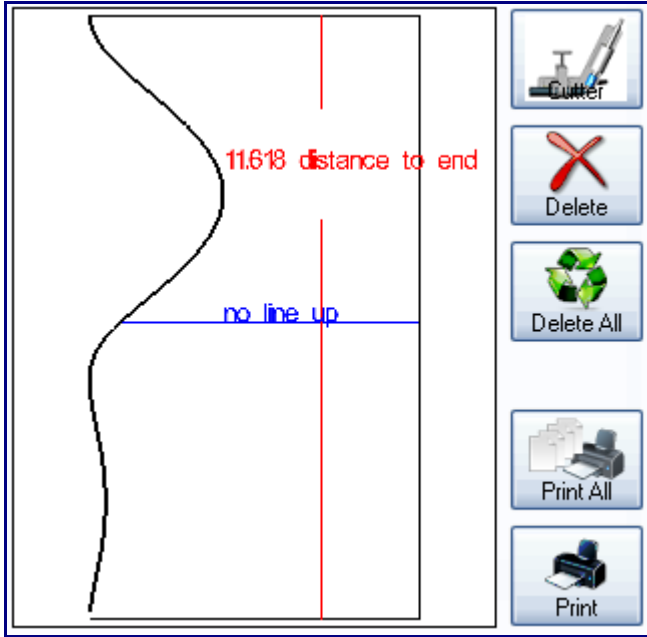
Click the New Cut button. Click the right tube, followed by the middle tube.



Click the Cut Complete button.



You are now finished adding cuts to the part. If you wanted to print out cutting sleeves for the cuts, you could do so by clicking the Print All button to the right of the cutting sleeve preview.



You are now finished with the cutting tutorial.